

WEATHER			
	Min.	Max.	Precip.
Wednesday, Dec. 8	19	34	Trace
Thursday, Dec. 9	28	40	0.00
Friday, Dec. 10	32	48	0.00
Saturday, Dec. 11	32	48	0.00
Sunday, Dec. 12	21	36	0.00
Monday, Dec. 13	23	36	0.10

ONE HUNDRED-SIXTH YEAR—No. 26

14 Pages This Week

CHELSEA, MICHIGAN, THURSDAY, DECEMBER 11, 1975

15c per copy

SUBSCRIPTION: \$6.00 PER YEAR

Matmen Place Third in Dexter Tournament

Chelsea wrestlers showed some promise as a tournament team last Saturday as they finished third in the Dexter Invitational Tournament.

The Bulldogs grapplers scored 92 points, showing that they were the only team able to come close to Saline and Pinckney who tied for first with 112 points.

Dexter placed at 62 points, followed by Willow Run at 60, North-west at 51, Northville, 50 and Brighton, 43.

The Bulldogs won four championships as Dale Schoenberg won the 126-pound title; Mike Young the 132-pound title; Tim Reed the 155-pound title and Dennis Bauer the 185-pound title.

Jim Stahl finished second at 119 pounds.

"We expected these young men to do well," remarked coach Bareis and added "however, our concern lies with the other positions. We could not get anyone in the consolation bracket and that's what hurt." Bareis said his grapplers were able to score points in all but three weight classes.

He reported that 98-pound Mark Bucholz scored a pin victory and then lost two exceedingly close matches, 4-3 and 3-2. At 105

pounds, Chuck Young lost to the first seed and then pinned his next opponent before losing his final match, 7-2. At 112 pounds, Joe Keiser wrestling up one weight was pinned and then lost in the very last second. Nick Keiser at 138 pounds was defeated twice.

Wrestling up at 145 pounds Rick Beeman did well in a 4-0 loss to the second seeded wrestler then lost a very close match, 5-4, in the last seconds of the match. Bruce Bennett at 167 pounds lost, 5-4, in a close match, then scored a 10-0 win before losing another close 5-4 match. James Bollinger scored a pin victory before losing twice.

Coach Bareis states, "We have the promise of a good team if some of these young men can gain enough experience and fill a couple of weight classes. We lost many matches Saturday just because wrestlers did not know how to protect a lead."

Bareis said that the team's outstanding wrestlers were very good and the young men gained some valuable experience.

Tonight (Thursday) the Bulldogs will hold one of their few home meets with Lincoln. Next Tuesday they will travel to Tecumseh.

Dennis Bauer Gains All-State Honors

Chelsea High school senior and co-captain of the 1975 Varsity football team, Dennis Bauer has been named to the Detroit Free Press Class B All-State second team. Bauer who has played both defensive linebacker and end and offensive guard and tackle in his three years as a member of CHS varsity football team was also named to the Free Press honorable mention Class B All-State team in 1974.

His coach, Phil Bareis attributes his recognition to his average of more than 10 tackles a game, his agility on his feet, his aggressiveness as an offensive man and perhaps most important, his strong desire to be a good football player.

Bauer, who has been playing football ever since he was drafted as a 7th grader to the Beach Middle school 8th grade team, hopes to pursue a career in the sport at a nearby University. Already a number of offers have poured in from all over the country.

Other football honors include being named to the All Southeastern Conference team both offensive and defensive for two consecutive years ('74 and '75). In 1973, as a sophomore, Bauer's name appeared on the All-SEC defensive roster. This year his team voted him Most Valuable Player.



DENNIS BAUER

Social Services Needs Cash for Christmas Gifts

"We still need cash donations to purchase toys and clothing," remarked Chelsea Social Services director Linda Ormsby when speaking of the drive to give some 50 needy area families a "happy" Christmas.

Mrs. Ormsby said donations may be sent to the Chelsea Social Services, Municipal Building, or may be dropped off at the police station on or before Dec. 18.



WHAT WAS IT I WANTED: It looks as if Patrick Barkley is having a difficult time deciding what he wants for Christmas. No matter what the jolly man has a way with children. Standing in line are Martin Heller, Gayla Bauer and Jeff Cox. They were just a few among the numerous children entertained Monday evening at the Kiwanis Club's annual Kiddies Christmas party.

High School Music Groups Plan Concert

The Chelsea High school music department will present a winter concert Sunday afternoon, Dec. 14 at 3:30 p.m. in the high school auditorium.

Performing will be the concert and symphony bands under the direction of Ronald Harris and Myles Mazur. Also performing will be the Concert Choir and the Villagers, conducted by DiAnn L'Roy.

The program will include seasonal tunes in addition to classical and popular selections.

There will be no admission charge.

Donors Sought For Dec. 20 Blood Clinic

Between six and 10 Chelsea Jaycees will be conducting a telephone solicitation drive Sunday to solicit and make appointments for those persons who wish to give blood for their Blood Drive. The drive will be held Saturday, Dec. 20 at the Fair Service Center.

According to Walt Brown who heads-up the telephone solicitation, Jaycees will telephone previous donors to inquire if they would like to give again and others who have expressed interest in contributing blood.

Brown said that while appointments are not necessary in order to give blood, persons will avoid waiting by making an appointment in advance. Appointments may be made by phoning Sandy Brown at 475-7634.

Jaycees will also arrange transportation to and from the Fair Service Center for donors who need it.

Refreshments will be served both prior to and after the drawing of blood.

Blood will be drawn by registered nurses. Equipment for the drive will be provided by the American Red Cross.

Wrestlers Pin New Boston For First Win

In a very exciting and close match Chelsea varsity wrestlers were able to gain their first victory of the year 34-23 when they met New Boston Huron.

The Bulldogs were off to a slow start as Mark Bucholz at 98 pounds was pinned, Chuck Young at 105 pounds scored a 7-7 draw and Joe Keiser, despite a hard fight, lost by a pin at 112 pounds.

However, the Bulldogs turned around and started moving as Jim Stahl, wrestling at 119 pounds, scored a 7-0 decision followed by identical decisions by Dale Schoenberg and Mike Young at 8-0 in the 126 and 132-pound classes, respectively.

At 138 pounds Nick Keiser lost, 6-2, followed by an important 7-3 come-from-behind victory at 145 pounds by Bob Swanberg.

The team's co-captain, Tim Reed, was able to score a fall victory. Coach Bareis reported that Bruce Bennett wrestled well and was ahead in his match before a mistake pinned him, costing the victory.

(Continued on page eight)



STATE LEAGUE VARSITY CHAMPS: Chelsea High school's varsity debate team composed of, standing from left, Doug Foreman, Kim Brown and seated from left, Brenda Shadonn and Barb Hinderer hold the group and individual trophies they received Monday evening following the second in the two-part debate tournament. Chelsea debaters walked away with championships in all three categories. Proudly looking on is their coach, William Coelius.



NOVICE CHAMPS: Novice debaters, standing from left, Kathy Burns and Tammy Puglisi and seated from left, Lesley Clark and Shelley Warren took the championship trophy Monday evening following the second in a two-part state league tournament. The debaters dealt defeat to every one of their opponents. Standing with them, their coach, William Coelius.



NOVICE II CHAMPS: This group of novice debaters standing from left Mike McKenzie and Lisa Walworth and seated from left Pat Salyer and Julie Prohaska, struck down each one of their opponents Monday evening in the second part of the two-part state league debate tournament. The group took the championship with an 8-0 record. Coaching them was William Coelius (standing right).

JV Wrestlers Win Over New Boston

With some very outstanding wrestling, the junior varsity grapplers rolled over New Boston Huron last week. Coach for the team, Sam Vogel reported he was very encouraged with the performances by all his JV wrestlers. Freshman wrestler, Pat Murphy at 98 pounds, after being down 2-1, scored a second period pin.

At 105 pounds, John Bulick, a sophomore, scored a 5-0 decision. Not having a 112-pound wrestler, the JV Bulldogs wrestled Ray Sabo at 105 pounds and although he was pinned, Coach Vogel said he demonstrated a number of moves and courage. Joe Marenietto, at 119 pounds, scored a quick 45-second pin. At

126 pounds Bari Bauer went 4-45 before scoring a pin victory. John Whitaker, at 132 pounds, also pinned his man after 4:10. 138 pounder Rocky Brandel scored a close 7-6 win. Rick Beeman, wrestling at 145 pounds, scored a pin at 2:20. The 155-pound class also provided a pin win for (Continued on page three)

Debate Teams All Tops in League Meet

Chelsea High school's Varsity, Novice I and Novice II debate teams took first place in all three divisions at the second of two State League Meets held Monday evening at Chelsea High school. Six schools participated in the meet.

According to Coach William Coelius, a showing such as this "is unprecedented. We are very pleased," he remarked.

Varsity debaters placed a record of 7-1 while the Novice I and Novice II teams each marked up 8-0 wins and losses; a total of 23 wins and one loss for the debaters.

Individual awards were also given to debaters. Varsity debaters Kim Brown, 1st affirmative and Barb Hinderer, 2nd negative debater, were each awarded first-place trophies. First negative debater, Doug Foreman, was awarded a second-place trophy, and Brenda Shadonn took a third-place trophy in the 2nd affirmative category.

Among novice debaters, awards were given to the top four people in each category. Chelsea's novice debaters Lisa Walworth, Lesley

Clark, Tammy Puglisi and Shelley Warren each placed first in their division. Julie Prohaska, Mike McKenzie, Pat Salyer and Kathy Burns were awarded second places.

STATE LEAGUE MEET Standings as of Dec. 8			
VARSITY			
	W	L	
Chelsea	7	1	
Greenhills	7	1	
Saline	5	3	
Novi	3	5	
Brighton	0	8	
NOVICE I			
	W	L	
Chelsea	8	0	
Saline	5	3	
Greenhills	3	5	
Brighton	2	6	
Novi	2	6	
NOVICE II			
	W	L	
Chelsea	8	0	
Greenhills	5	3	
Saline	5	3	
Novi	2	6	
Brighton	2	6	
Adrian	2	6	

Cagers Drop 3rd Consecutive Game

We played poorly, we shot very poorly from the floor and extremely poorly from the foul line," remarked Chelsea High school varsity basketball coach Tom Ballstrere in discussing his team's third consecutive loss this season.

The Bulldogs were downed, 64-32 in their first Southeastern Conference game of the season played against Lincoln last Friday evening.

Commenting that the team averaged only eight points a quarter and shooting 33 percent from the floor and 23 percent from the

foul line, it is obvious that the Railsplitters found their victory sweet and easy.

"We are not satisfied," Ballstrere said. "We've got to improve," he added.

High scorer for Chelsea was Randy Guenther with six points. Pete Feeney had five, Mike Tobin and Dean Thompson each had four; Don Morrison, three; Tom Hafer and Anthony Houle, two and Rindy Sweeney, one. In rebounding Sweeney had five, Guenther four and Jerry Benjamin four.

This week-end, the cagers will meet Novi Friday evening and Brighton Saturday evening; both teams are reported to be tough. The games will be played on the home court.

Christmas Cartoon Show Scheduled For Saturday

Chelsea Recreation Council will offer two showings of Christmas Cartoons Saturday, Dec. 20 in the Chelsea High school auditorium.

According to Council Director, Holly Porter, the cartoons shown will have a Christmas theme. Mrs. Porter said that she has not yet been notified of their titles. The showings will be at 2 and 8 p.m. Admission is 50 cents.

Christmas Concert

Slated By Beach

Middle School Bands

Beach Middle school's 7th and 8th grade bands will present a Christmas concert Thursday evening, Dec. 18 at 7:30 in the CHS auditorium.

Refreshments will be served following the concert.



DONALD SCHOENBERG.

Schoenberg Named Sylvan Supervisor

At the Dec. 2 meeting of the Sylvan Township Board, Donald Schoenberg was appointed Sylvan Township supervisor.

The 47-year-old Schoenberg replaces Maurice Hoffman who tendered his resignation to the board last month for health and personal reasons. Hoffman served as supervisor for the township for 20

years. The term will expire next November.

Schoenberg who is employed with Pierson & Son, local contractors, has served on the Township Board of Review for one year. He has lived in Sylvan township for 10 years.

He and his wife Cheryl and their three children reside at 20330 Jerusalem Rd.

Established 1871 **The Chelsea Standard** Telephone 475-1371Excellence Award By Michigan Press Association
1951-1952-1960-1961-1965-1966

Walter P. Leonard, Editor and Publisher

Published every Thursday morning at 300 North Main Street, Chelsea, Mich. 48118, and second class postage paid at Chelsea, Mich., under the Act of March 3, 1879.

Subscription Rates (Payable in Advance)	
In Michigan:	Outside Michigan:
One Year.....\$6.00	One Year.....\$8.50
Six Months.....\$3.50	Six Months.....\$4.50
Single Copies.....\$.20	Single Copies.....\$.25

MEMBER
NATIONAL NEWSPAPER
Association - Founded 1895

National Advertising Representative:
MICHIGAN NEWSPAPERS, INC.
257 Michigan Ave.
East Lansing, Mich. 48823

Uncle Lew from Lima Says:

DEAR MISTER EDITOR:

The fellers at the country store was not at all bothered Saturday night by Bug Hookum's report that a drought was overdue. Clem Webster said that with the variety of problems farmers and ranchers deal with all the time, one more calamity won't upset em. If it ain't the drought, Clem allowed, it's the flood, freeze, hail, heat and insects, or the bottom falls out of the market the week they are ready to sell. To top it off, Clem went on, they usual find out that jokers in air condition offices in New York was buying and selling their crops and cattle four months ago, and making four times what they sold for after they gambled on em and sweated over em.

Bug had this item that said droughts in the Midwest have been running on a 22-year schedule, and that we better expect a long dry spell. To make it worst, Bug said more land now is in cultivation, making the problem of duststorms during the drought and erosion when it's over even more of a danger. Clem claimed that even if the perdition is based on solid facts, it don't do nothing but change a poor risk to a sure loss. And that, Clem declared, ain't never discouraged a farmer yet.

General speaking, Clem said, the farmer is a dollar short and a hour late ever time. He had said this report where scientists final feel they can lick the bowevil, but now that we got all the may made fiber and all the India cotton coming in from Hong Kong and Japan, our bowevil probable is half starved already. The history of farming has been from glut to famine, Clem said, and nothing short of love for the land will keep a man trying to make a living working like a dog while he rides the ups and downs.

Ed Doolittle said he had been reading some U.S. Agriculture Department pamphlets on the subject, and he saw where according to some figures there won't be no crop land left in this country in another 20 year anyway. At the rate folks are moving into the country and calling it the suburbs, Ed said, what ain't covered over in blacktop parking lots and concrete interstate cloverleaves will have a house on it. Ed said

USDA studies show that more than a million acres are used for new homes ever year, and by his calculating the shopping centers must take up another 10 million. Counting the half-million acres the USDA says we're losing to soil erosion there won't be any left to wash away when the floods and the next drought, was Ed's words.

"On top of that, went on Ed, he had saw a FBI report on last year's crimes, and even that is moving to the country. The rate of increase in major crimes was higher in rural and suburban areas than in the cities. Ed saw some promise here. He told the fellers there is two ways to make sure crime don't pay. One is to let the Government run it, and the other is to keep it down on the farm, where hardly anything pays.

Yours truly,
Uncle Lew.

Men's Recreation Basketball League Organizing Dec. 15

An organizational meeting for this year's Men's Basketball League will be held Monday, Dec. 15 in the large group instruction room at Beach Middle school.

Directing the men's league this year will be Leonard Kozma. He will meet Monday with representatives from last year's teams as well as those who wish to start a team this year.

Recreation Director Council Holly Porter said that it is essential for teams which want to participate in the program to send a representative to the meeting or contact Kozma at 475-7452 if they are unable to attend.

In Michigan, more adults than children have leukemia. And despite its name, the Children's Leukemia Foundation of Michigan provides services to everyone with the disease. Free drugs, free blood, family counseling and research are the things which the Foundation provides with the contributions it receives through its membership in the United Way of Michigan.

MICHIGAN MIRROR

By Elmer B. White, Secretary, Michigan Press Association

It's on the Books

Watch it this winter. In Michigan, it's illegal to wear a mask covering all or part of the face while in a public place.

So reports House GOP Floor Leader William Bryant of Grosse Pointe Farms, a lawyer who recently perused Michigan's statutes to see just how many "idiotic" ones he could find. At least 39 cropped up, including the mask law.

"The list is only the tip of the iceberg, only the most stand-out examples of criminal laws which need re-examination," Bryant says. "It is not in the interest of freedom that laws exist which reasonable and moral men cannot help but violate in a daily routine."

And a 1952 law still requires all communists to register, keep communists or the communist party off the ballot and precludes communists from any public job.

or roughly crowding people unnecessarily in a public place."

It's also a crime to ride a bike on any sidewalk in "any unincorporated village" or hold a dance marathon or "walkathon or similar endurance contest," says Bryant.

And a 1952 law still requires all communists to register, keep communists or the communist party off the ballot and precludes communists from any public job.

Getting out of laws off "the books is Bryant's goal.

"There are so many left over laws on the books that aren't needed anymore," he says. "And we just keep piling others on top of them. The only time we examine the old laws is when someone calls a particularly bad one to our attention."

Bryant contends that "respect for the law demands rational and limited laws which are widely known, understood and accepted, and which are vigorously, fairly and impartially enforced."

Who Knows?

Coy, he's not. Just being practical.

Zoltan A. Ferency, the shaggy-haired lawyer who once chaired Michigan's Democratic Party, then left to help found the Human Rights Party (HRP), says he has no plans at this point to run for office. But he adds, that doesn't mean he won't be a candidate.

The HRP person whose name commands some recognition across the state, Ferency noted recently that "after we see who and what is available, the need may be that I run for office."

Ferency has been mentioned as a possible HRP candidate for the U.S. Senate seat being vacated by Democrat Philip A. Hart.

What is HRP all about?

Ferency sees the party as an alternative to the two-party system. "We must convince the people that voting is not choosing the lesser of two evils," he says. "I think the Human Rights Party is helping to provide that alternative."

The HRP candidate for East Lansing City Council recently garnered 23 percent of the vote—not enough to win a council seat, but an HRP-backed rent control proposal picked up 42 percent of the votes in that community.

Decline Slowing

Just nine pupils in a school district in Michigan?

Yep. That's what the Michigan Department of Education reports for the student population of Bois Blanc Public School District on Bois Blanc Island in northern Lake Huron.

Needless to say, that's the smallest district in the state. And the next largest, the Onondaga Township School District in Eaton



NORTH ELEMENTARY SCHOOL NOTES

MUSIC DEPARTMENT—

Teacher: Mrs. Dye

The Christmas programs at North Elementary school will be on Dec. 17 at 10 for grades 1 and 2, and Dec. 18 at 10 for grade 3 and 4. Please visit our beautiful new music room for cookie and coffee after the programs.

PRINCIPAL'S OFFICE—

I'm glad to see so many of you parents helping out at school. I've seen parents in the Bucket Brigade tutoring children on those hard-to-learn skills. Also, some parents have been working with small groups of children on various projects.

Several high school students are coming in each day to help as aides in many of the classrooms. During part of the semester there were students from the speech class at the high school coming

in to tell stories, which added some interesting times to the days.

We are finding that these additional helpers from home and high school are making a difference with the children. The children are able to practice skills, get additional help at troublesome spots, and get some needed attention. My thanks to all of you.

Camper Shell Stolen from Parked Pick-Up

A camper shell valued at \$250 was reported stolen last week from the Chelsea Medical Center parking lot where the 1975 pick-up to which it was attached was parked while its owner was in the hospital.

According to Chelsea police, the shell was reported missing by Mrs. Sharon McPherson of South Lyon who told police the vehicle and been parked in the lot for two days while her husband was confined as a patient.

Police have no suspects and the case remains open pending further investigation.

STORE-WIDE FURNITURE SALE

Special Holiday Discounts

on

Famous Name Brands

such as

Kroehler - Bassett - Tell City

Berkline - Howell - Dinaire

LARGE INVENTORY

FOR IMMEDIATE DELIVERY

BEFORE CHRISTMAS

MEABON'S

TV, Fum. & Appl.

1170 M-32, Chelsea

Ph. 475-1666

INTRODUCING PRESTIGE Emergency Cash

up to \$200
when you are
out-of-town

PRESTIGE

ANN ARBOR FEDERAL SAVINGS



Out of town...out of cash...out of luck? Not when you carry an AAFS Prestige Card! Prestige Card, a wonderful new service, available at all AAFS offices, provides up to \$200 emergency out-of-town cash.

You can use your Prestige Card at over 1500 participating savings and loan associations in the United States, including Hawaii and Alaska to get cash fast. Identify yourself with your card and identifying code and the Prestige Counselor at the participating association will cash your personal check or withdraw the amount desired from your AAFS passbook savings account. (The balance in your passbook account must be sufficient to cover the amount you wish to withdraw.)

The Prestige Card is free and there is no charge for the emergency service. The only requirement is

that you maintain a minimum balance of \$1000 in savings at AAFS.

FREE MONEY ORDERS
AND TRAVELERS CHECKS

With the Prestige Card your travelers checks and money orders are on the house. No limit to the number you can have.

FREE NOTARY SERVICE for all Prestige Card participants.

COME IN AND SIGN UP FOR
YOUR PRESTIGE CARD AT ANY
AAFS OFFICE.

ANN ARBOR FEDERAL SAVINGS

AAFS

Member: FSILC

ANN ARBOR OFFICES: Downtown, Liberty at Division, Westside, Pauline at Stadium, Eastside, Huron Parkway at Platt, Northside, Plymouth at Nixon;
CHELSEA—Main Street near Old U. S. 12; DEXTER—8081 Main Street; YPSILANTI—Hewitt at Packard; MANCHESTER—111 East Main Street;
BRIGHTON—205 West Grand River; SALINE—101 West Michigan.

Say MERRY CHRISTMAS with FLOWERS from

CHELSEA GREENHOUSE

7010 LINGANE RD., CHELSEA

PHONE 475-1353

Free Delivery in the Chelsea, Dexter, Pinckney, Grass Lake, Manchester, Gregory areas.

CHARTER MEMBER
FTD - TDSOPEN SUNDAYS
UNTIL CHRISTMAS

For your selection we have 5,000 Poinsettias
grown in our own greenhouse.

HOLIDAY RED - PINK CHEER - SNOW WHITE

Priced from \$3.00 up

Single Blooms
Cash & Carry - \$1.29

Also a wide variety of Cut Flowers and other blooming plants
for your holiday decorations.

NEW HANGING POTS OF RED POINSETTIAS

EVERGREEN WREATHS and BLANKETS

A house full to choose from.

BLANKETS with Red Ruscus, ribbon
and your choice of cones\$12.50 - \$15

WREATHS, wide variety

2-ft. untrimmed	\$ 3.00
2-ft. trimmed	\$ 5.00
3-ft. trimmed	\$ 7.50
4-ft. trimmed	\$12.00

- ★ MISTLETOE
- ★ HOLLY
- ★ CANDLE Arrangements
- ★ Fresh & Artificial
- ★ CHRISTMAS NOVELTIES
- ★ DOOR SWAGS
- ★ PLANTERS
- ★ TERRARIUMS
- ★ CORSAGES
- ★ EVERGREEN ROPING

We Do All Phases of Wedding Flowers to fit any budget

CHELSEA GREENHOUSE

"Our 73rd Year in Business"

7010 LINGANE RD., CHELSEA

PHONE 475-1353

Howell Livestock Auction

Starts 1 p.m. Every Monday
Phone 546-2470. Bim Franklin

Market Report for Dec. 8

CATTLE—

Bulk Cattle, Choice Steers, \$44 to \$47
Heavy High Choice Steers, \$47 to \$48
Fed Choice Heifers, \$37.40 to \$42
Fed Choice Steers, \$38 to \$38
Fed Choice, \$29 and down.

COWS—

Buller Cows, \$24 to \$30
All Commercial, \$20 to \$24
Canner-Cutters, \$12 to \$20
Fat Beef Cows, \$18 to \$22

BULLS—

Heavy Bologna, \$25 to \$30
Light and Common, \$24 and down.

HEDERS—

100-150 lb. Good-Choice Steers, \$25 to \$27
100-150 lb. Good-Choice Steers, \$22 to \$24
500-600 lb. Good-Choice Heifers, \$22 to \$24
500-600 lb. Holstein Steers, \$22 to \$24
500-600 lb. Holstein Steers, \$24 to \$26

CALVES—

Prime, \$50 to \$55
Good-Choice, \$40 to \$50
Heavy Deacons, \$30 to \$30
Cull & Med., \$5 to \$20
Calves going back to farms sold at

SHEEP—

Shorn Slaughter Lambs:
Choice-Prime, \$45 to \$48.50
Good-Utility, \$40 to \$45

Woolled Slaughter Lambs:
Choice-Prime, \$30 to \$44
Good-Utility, \$28 to \$30
Slaughter Ewes, \$8 to \$14
Feeder Lambs, All Weights, \$15 to \$13

HOGS—

200 to 250 lbs., No. 1, \$51 to \$52.50
200 to 250 lbs., No. 2, \$51 to \$51.50
Heavy Hogs, 240 lbs. up, \$40 to \$51
Light Hogs, 190 lbs. and down, \$40 to \$50

SEWING—

Fancy Light, \$38 to \$40
200-400 lbs., \$36 to \$38
500 lbs. and up, \$36 to \$38

HAIR and Skins:

All Weights, \$40 to \$45
Feeder Pigs:
300-400 lbs., \$30 to \$55
400-500 lbs., \$40 to \$45

WAG—

Wagging, per bale, \$0.15 to \$1.25
Wagging, per bale, \$1.25 to \$2.00

WAG—

Wagging, \$50 to \$60

WAG—

Wagging, \$400 to \$450
Wagging, type Cows, \$120 to \$200

JV Wrestlers Win Over New Boston

(Continued from page one)

Greg Reed, Victor Verchereau posted an 11-6 decision win at 167 pounds.

At 185 pounds Steve Marriott had rolled up an 11-1 lead before he was caught in a pin. In the heavyweight match, Tom Bareis scored a first period pin at 1:44.

In exhibition matches Tony Wisniewski, 98 pounds; Doug Clark, 98 pounds and Bob Ostrander at 185 pounds all lost by a pin.

"In all," remarked Vogel, "they showed a lot of improvement and they definitely show promise of being strong and having a balanced lineup."

JV wrestlers will go against Lincoln today (Thursday).

Police Department Will Get New Phone Numbers

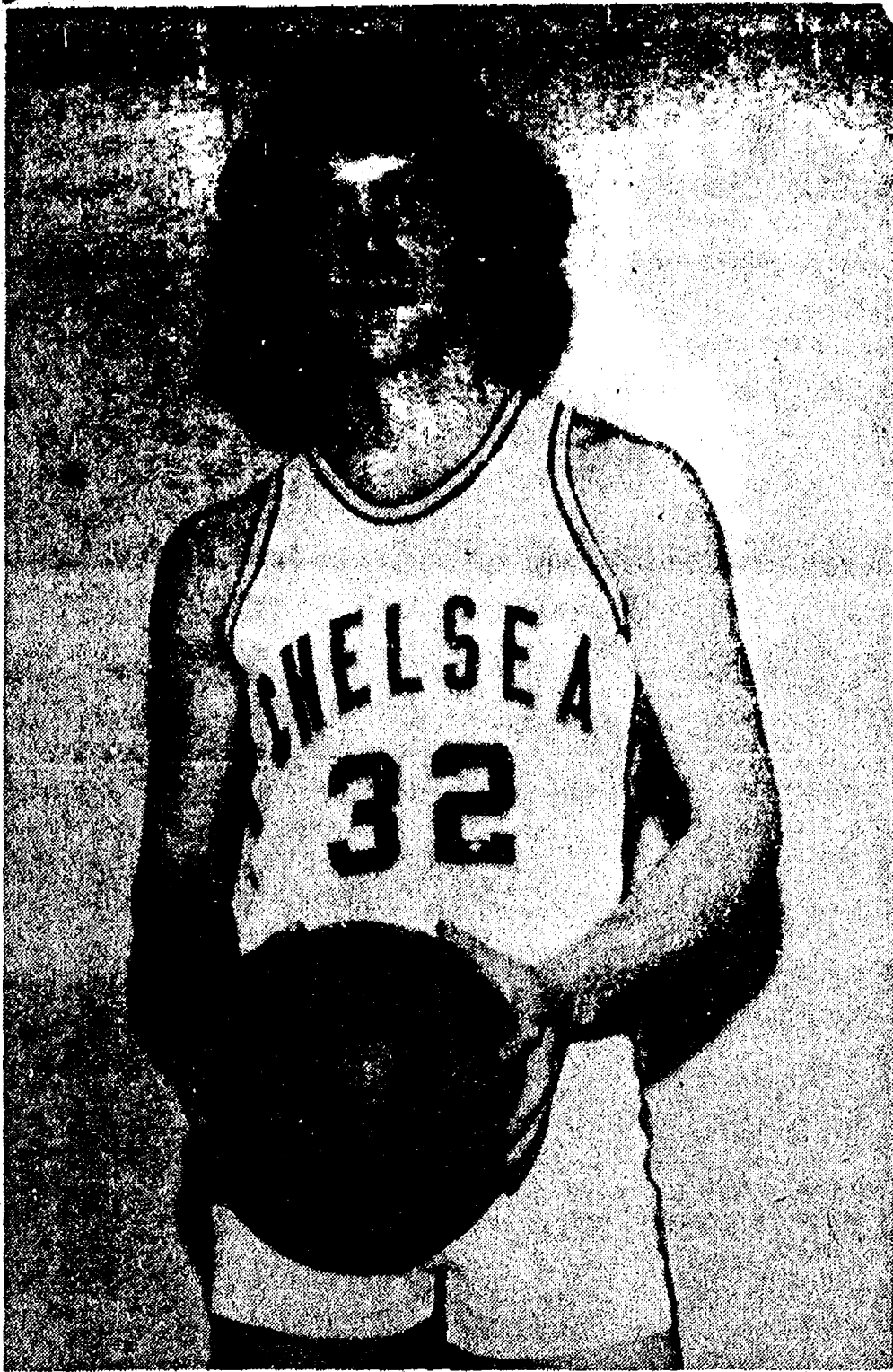
Despite the fact that the new telephone directory lists the Chelsea police number at 475-1555, that number is due to fade out of existence in the next month when Chelsea residents will only be able to reach police by their new numbers.

Police chief George Meranuck suggests that all residents jot down the new numbers in a prominent place by the phone. They are: 475-9122 and 475-9123.

The police had their numbers changed to that if one number should be busy a caller would automatically be put through on the other line.

Inflation blows up everything a white collar worker has to buy, but leaves his pay envelope as flat as ever.

Cager of the Week



TOM HAFFER (32): Senior forward Tom Hafer is in his second year with Chelsea's varsity basketball team, though he's been playing basketball ever since the 7th grade at Beach Middle school. Despite the Bulldogs' 0 and 3 record Tom says he is not down. "We've got to get together," reiterating the words of his coach Tom Ballstre, "It's going to take a lot of hard work. That's for sure." Tom foresees Milan, Saline and Dexter to be the Bulldogs' toughest opponents this year. With these games not coming around until January, the Bulldogs could toughen their ranks by then. Aside from basketball, Tom is perhaps best remembered for his part in the award winning "I Am Not A Crook" multiple speech with the high school's forensics team. The son of Mr. and Mrs. John Hafer, Tom has two sisters, Suzanne and Leigh Ann.

Standard Ads Are A Good Shopping Guide.

Arrested on Warrant for Assault, Battery Charge

Chelsea police arrested Herbert Lynn Carpenter Friday evening, Dec. 5 on a warrant for assault and battery issued by State Police Post 26.

Officer Yager reported that police had prior knowledge of a valid warrant for Carpenter's arrest and knew of his whereabouts because of an earlier complaint that evening on his car.

Carpenter was arrested at the residence he was visiting and taken to the station where he was bonded out to his father on \$100. The bond money was turned over to district court.

The case is closed for the Chelsea Police Department.

SHOPLIFTER GETS REFUND

Duluth, Minn.—Mrs. Faye Ellen Panetti, 41, had a good thing going when she received \$41 for merchandise she shoplifted earlier. When she went back to the same store, employees recognized her. Mrs. Panetti pleaded guilty in court and was fined \$30.

SOUTHERN BOY MANOR MOTEL

Efficiency Units - By Day, Week, or Month

13190 M-52

PHONE (517) 851-4213

(2 miles south of Stockbridge)

CHANNEL MASTER

8-Track Play or Play Record

109⁹⁵ RETAIL



HE6045 AM/FM Multiplex Receiver with Stereo 8-Track Cartridge Player and Air Suspension Speaker System

Automatic FM Stereo Switching

Built-in Automatic Frequency Control

Units and speaker cabinets are of veneered construction with an outer veneer of wood-grained vinyl.

139⁹⁵ RETAIL



HR6048 Stereo 8-Track Player/Recorder with AM/FM Multiplex Receiver and Air Suspension Speakers

Pushbutton Selectors for Auto Stop, Fast Forward Record, Channel Select

Automatic FM Stereo Switching

Built-in Automatic Frequency Control

DO YOUR CHRISTMAS SHOPPING EARLY AT

Phone 475-1221

Open Fri. 'til 9

HEYDLAUFF'S

CHELSEA

113 N. MAIN ST.

Full Line Supermarket

MARATHON GAS PUMPS

LOTTERY TICKETS

BEER - WINE - LIQUOR

U.S.D.A. CHOICE BEEF

AUTHORIZED FOOD STAMP STORE

Jiffy market

Big Enough To Serve You . . . Small Enough To Know You!

Open 7 Days A Week

7 a.m. to 10 p.m.

Corner Werkner & Sibley Rds.

PHONE 475-1701

Sale Prices Effective Thursday, Dec. 11 thru Sunday, Dec. 14

Guaranteed Satisfaction — Courteous Service

JIFFY MARKET WEEK-END SPECIALS

KLEEN-MAID	1 1/4-Lb. Loaf	29 ^c
WHITE BREAD		
FARM MAID	Gal.	\$1 ²⁹
MILK		
FRESH, LEAN	Lb.	79 ^c
HAMBURGER		
BREAST O' CHICKEN	6 1/2-Oz. Can	47 ^c
CHUNK TUNA		
KRAFT	1-Pint Jar	48 ^c
MAYONNAISE		
VELVET	4-Lb. Pail	\$2 ⁶⁹
PEANUT BUTTER		

U.S.D.A. Choice Freezer Beef

SIDES - FRONTS - HINDS - LOINS - FULL RIB

Cut, Wrapped, Frozen To Your Specifications.

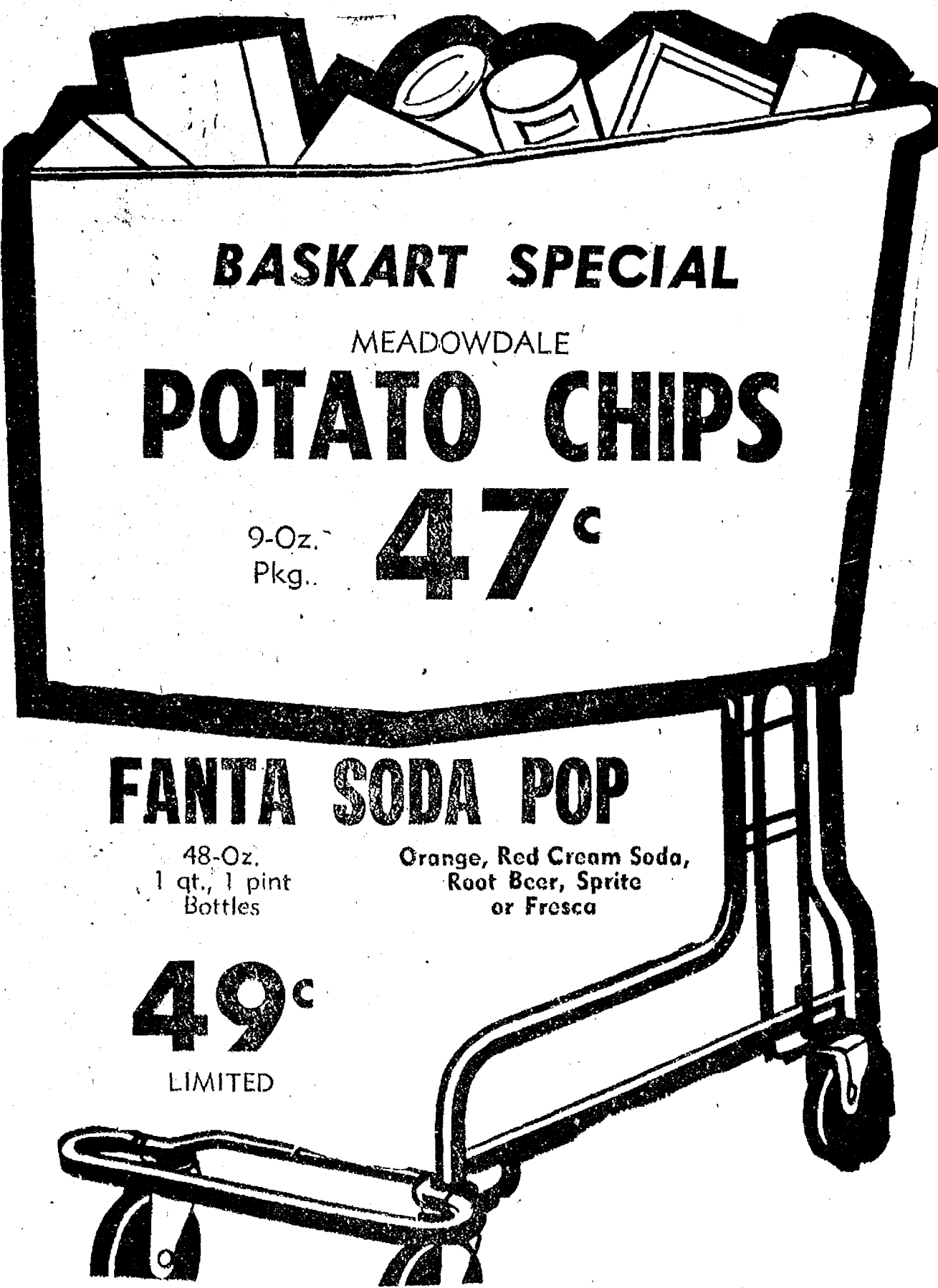
LOCAL FARM BEEF FOR SALE.

CORN-FED BEEF AT ITS BEST!

Custom Cutting, Grinding, Wrapping and Freezing

YOUR BEEF

QUICK SERVICE on HAULING and SLAUGHTERING



BASKART SPECIAL

MEADOWDALE

POTATO CHIPS

9-Oz. Pkg. 47^c

FANTA SODA POP

48-Oz. 1 qt., 1 pint Bottles

Orange, Red Cream Soda, Root Beer, Sprite or Frosca

49^c LIMITED

HOLIDAY FOODS

CHRISTMAS CANDIES

FANCY BULK NUTS

FULL ASSORTMENT LIQUORS

BEER - CASE OR KEG

LARGE ASSORTMENT WINES

DATES - FIGS

GLAZED FRUIT

MINCEMEAT - EGGNOG

CAKE DOCORETTES

SPICED PEACHES - PEARS

HAM - CHEESE PLATES

JIFFY MARKET MEAT DEPT.

FEATURES U.S.D.A. CHOICE BEEF

U.S.D.A. CHOICE

ROUND STEAK lb. \$1⁴⁹

U.S.D.A. CHOICE

RIB STEAK lb. \$1⁶⁹

1/4 LOIN SLICED, 9-11 CHOPS IN PKG.

Quarter Loin Pork Chops, lb. \$1⁴⁹

YOUNG - TENDER

BEEF LIVER lb. 49^c

YOUNG - FRESH - WHOLE - GRADE A

FRYING CHICKENS lb. 49^c

FARMER PEET'S

RING BOLOGNA lb. 98^c

JIFFY MARKET MARATHON GAS

Top Quality Gas at Fair Prices, While Supply Lasts

REGULAR

GAS

OPEN 7 DAYS A WEEK

7 a.m. to 10 p.m.

55.9

Gal. Including All Taxes

SAVE GAS MONEY

Do Your Christmas Shopping in Chelsea

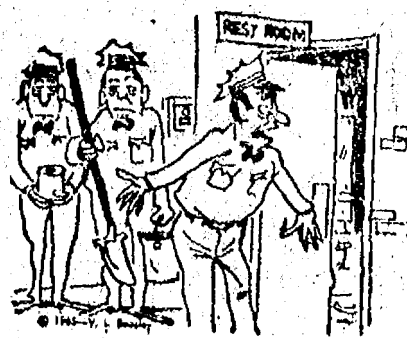
GAS PUMPS & STORE OPEN 7 a.m. to 10 p.m. 7 Days a Week — U. S. Authorized Food Stamp Store — Daily & Sunday Papers

EDUCATION FOR ALL
Federal aid to education should
start with the teaching of a lit-
eratic—in Washington.

Subscribe today to The Standard!

Mobil-Toons

By GLENN



"Quick... the shovel!"

We always keep our rest
rooms clean!

GLENN'S MOBIL SERVICE

1627 M-52 & I-94
CHELSEA, MICHIGAN
Phone 475-1767
GLENN HEIM
PROP.



PATIENTS at Chelsea Community hospital were entertained last Sunday afternoon with an informal Christmas tea in the hospital's dining room. Patients enjoyed Christmas cookies, punch, tea, coffee, carols and some good old-fashioned Christmas cheer too.

KNEE FASHIONS

The short skirts of today make it a lot easier to get up stairs.

You can always tell when a man is enjoying himself at a party by watching his wife.

Legion Auxiliary Members Participate In Gift Exchange

The regular meeting of Herbert J. McKune American Legion Auxiliary Unit 31 was held Tuesday, Dec. 2 at the Chelsea Methodist Home. Sixteen members enjoyed the pot-luck dinner and Christmas gift exchange.

A report was given concerning Youth Government Day held in Ann Arbor, Nov. 13. Twenty-two Chelsea students were in attendance and three Auxiliary members helped serve the lunch for all students at the Ann Arbor Legion Home.

Three members and one Legionnaire worked at the gift shop held at the Veteran's Administration Hospital in Ann Arbor. More than 200 patients selected gifts for members of their family. This service is provided free of charge by the American Legion Auxiliary.

The next regular meeting will be held Jan. 6 at the McKune Memorial Library.

Woman's Club Members Model Holiday Fashions

Woman's Club of Chelsea met at the McKune Memorial Library Dec. 9 for the December business meeting and Christmas program. The clubroom was tastefully decorated with a Christmas tree and ornaments. The evening began with a social hour. Following the brief business meeting, the program featured a mini-fashion show in which several members modeled dresses and accessories they will be wearing for holiday activities. Fashion introductions and descriptive comments were given by Mrs. Gifford Johnson.

Taking part in the program were Mrs. Theodore Spence, Mrs. Gifford Johnson, Mrs. Elwin Barth, Mrs. Vito LaBarbara, Mrs. Steven Pawlowski, Mrs. David Strieker, Mrs. Patrick Turcott, Mrs. Phillip Vogel and her daughter Gretchen who was a guest for the evening. The program ended with a surprise visit from Santa Claus and gift exchange. Members of the program committee were hostesses.

The next meeting will be held at the club room at 8 p.m. Jan. 13.

CHILD STUDY CLUB

Chelsea Child Study Club held their annual Christmas party Tuesday, Dec. 9 at the home of Ellie Griffin. Regular and associate members were joined with honorary members to enjoy a delicious punch and tasty snacks. A home-made Christmas gift exchange followed. Everyone received a beautifully made gift. Dessert was served. Co-hostesses for the evening were Ruth Harbaugh, Barbara Merkel, Mary Neumeyer and Ruth Nugent.

BUSY STORK

Oakland, Calif.—Recently, LeRoy Southard had an exciting day when he became a father and a grandfather almost simultaneously. His wife, 44, and daughter, Mrs. Stanley Prock, 20, gave birth to sons only minutes apart in different hospitals.

VFW Auxiliary Busy With Many Holiday Projects

A regular business and social meeting of the Ladies Auxiliary to VFW Post 4076 was held Monday, Dec. 8, in the V.F.W. Hall with 10 members present.

The charter was draped in memory of Iza Carty and a book in her memory will be purchased and placed in the National Home Library at Eaton Rapids because of the many hours she spent as a volunteer in the Ann Arbor, V.A. Hospital.

One dollar was voted out for each of the nine department sponsored hospitals in Michigan to help purchase comfort items. Five dollars was allowed for the "New Years Eve" party at the National Home. Fifteen dollars was voted out to the local Firemen's Auxiliary to help purchase fresh fruit, etc. through the Chelsea Social Services for the needy families in this locality at Christmas time.

A report of the Voice of Democracy contest held in the high school was given by Lucy Platt. Judges were Frank White, of VFW Post No. 4076, Mrs. Leona Beeman, principal of Munith school, Bernice Packard of North Elementary school, and Mrs. Mann of the Manchester schools.

Mary Kniss gave a report of the bazaar, held Dec. 5 and 6. It was announced a party will be given by the coterie at the National Home Sunday, Dec. 21, at 10 a.m. Anyone interested is invited to attend. Please contact a Post member for more information.

Members also were asked to give blood at the Chelsea Blood Bank Clinic, Dec. 20, at the Fair building. Also members were urged to volunteer their services in assisting at the clinic.

Following the business meeting, refreshments were served. The next business meeting will be Jan. 12.

Former Chelsea Woman Turns Chorus Girl in Hospital Benefit Show

Mrs. Bruce (Sue) Spencer wholeheartedly participated in a recent benefit production of "Fabulous Follies '75" presented by the Borgess Hospital Service League of Kalamazoo.

Mrs. Spencer, a former Chelsea resident and daughter of Mr. and Mrs. James Liebeck was a Ziegfeld flapper girl, a member of the all-girl orchestra and the choraleers in the production given at Miller Auditorium, Western Michigan University.

Proceeds from the show went to the nursing scholarships at Nazareth College and Kalamazoo Valley Community College and the Renal Research Lab at Borgess Hospital.

Elizabeth A. Collins, Dennis Morse Wed at Congregational Church

At home at 552½ McKinley following a honeymoon at Niagara Falls, a.e. Mr. and Mrs. Dennis Morse. The bride is the daughter of Mr. and Mrs. Edward Morse of 145 Jersey St. Mr. Morse is the son of Mr. and Mrs. Larry Morse of 1335 Oakridge Dr.

The couple were wed at a candle light ceremony Nov. 23 at the First Congregational church of Chelsea. Rev. Carl Schwann presided over the ceremony during which the bride's cousin, Miss Beth Ann Morse, sang "Hello, My Love." David Holtzman, a cousin to the bride, officiated, played the organ.

For her wedding, the former Miss Collins chose a white gown with an overlay of Chantilly lace and sheer Chantilly lace long sleeves with a ruffle at the cuffs. Her veil held in place with a Juliet cap, was edged in matching Chantilly lace. She carried a bouquet of white roses and baby's breath.

Miss Debra Ann Rossbach of 720 N. Main St., served as maid of honor. She was dressed in spice colored A-line styled with a complementary jacket edged in ivory lace. She carried a bouquet of daisies and carnations.

Nantucket, Mass.—Walking down the street recently, William L. Garret picked up a bracelet that gave it to a neighbor's child. He saw an ad in the paper offering \$200 reward for the lost bracelet.

Bridesmaids were Miss Terri Jones of Chelsea, Mrs. Theresa Jackson, the bridegroom's sister, (Chelsea) and Mrs. Cindy Messer of Chelsea. Their dresses were coordinated to the color of the bridesmaids in the color of forest green. They too carried bouquets of daisies and carnations.

Attending the bridegroom as best man was his brother, Charles Walter Morse of Pontiac. Ushers were Larry Richard O'Hara, the bride's brother, Larry O'Hara, brother-in-law of the bridegroom, and Donald Messer, all of Chelsea.

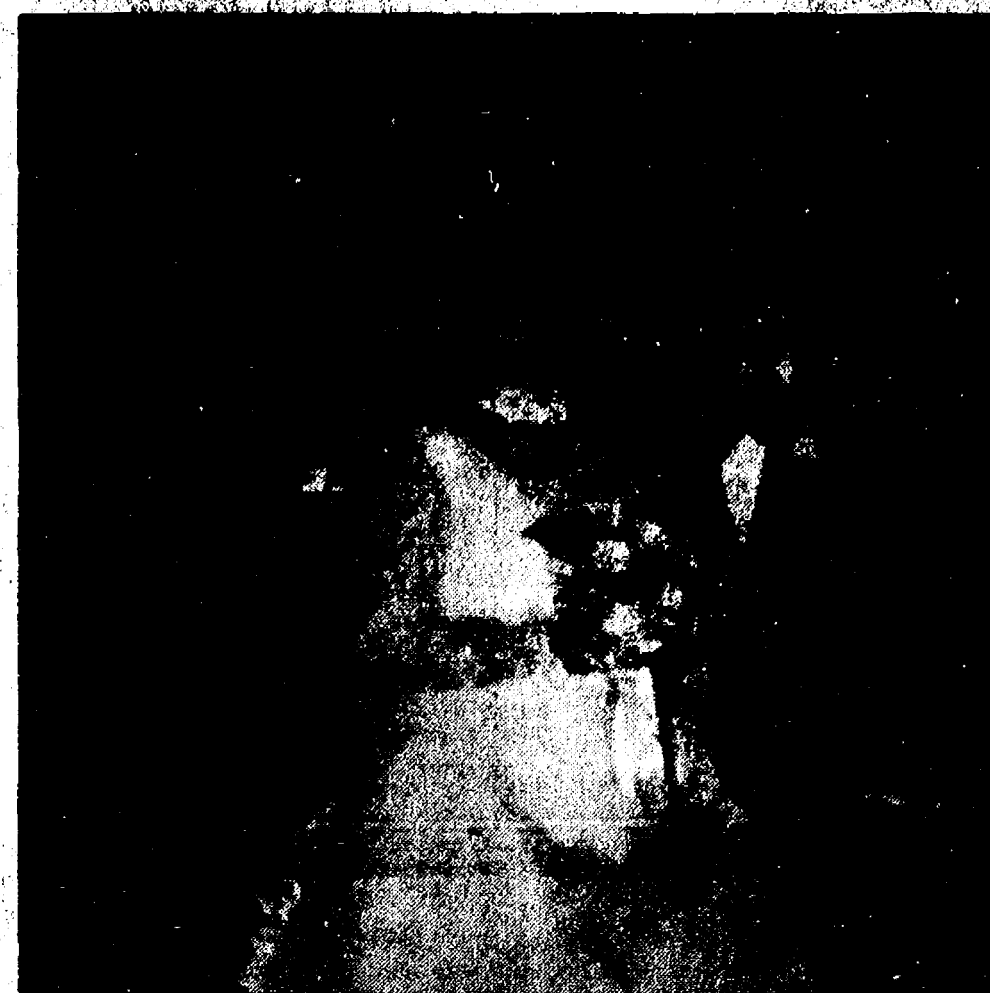
Sarah Schwann served as flower girl.

For her daughter's wedding, Mrs. Collins chose a floor-length A-line evening gown of deep peach with hiflon sleeves. Mrs. Morse was dressed in a coral-colored floor-length A-line dress with matching jacket.

Following the ceremony, a reception was held in the church basement. Miss Patricia Ross of Manchester and Mrs. Clair Plum of Parma poured. Mrs. Annette Briggs was in charge of the guest book. The bride's aunt, Mrs. Edward Hartke, served the wedding cake.

The bride is a 1975 graduate of Chelsea High school and is currently attending Preston's Beauty Academy in Ann Arbor. She is also employed with the Chelsea Community Hospital.

The bridegroom is a 1968 graduate of Clarenceville High school and a graduate of Schoolcraft Community College. He too is employed with Chelsea Community Hospital.



Mr. and Mrs. Dennis Morse

CUSTOM

BUMPING and PAINTING

FREE ESTIMATES - ALL MAKES

Get the Best for Less!

FRANK GROHS CHEVROLET

Phone 426-4677 Dexter, Mich.

BOYER AUTOMOTIVE SUPPLY, INC.

Has a great selection of gift ideas for the family car user. Our experienced clerks can help select a fine gift!

IMPACT WRENCHES,
ELECTRIC AND AIR
IMPACT CUTTERS
TOOL SETS
PULLERS
TORQUE WRENCHES
ENGINE HOISTS
AIR TANKS
SCREWDRIVER SETS
MIRROR SETS
HEADERS, SIDEPIPES
SHIFTERS
WINDOW DEFROSTERS
ICE SCRAPPERS
GREASE GUNS

IF IN DOUBT
ABOUT WHAT
TO BUY
WE DO HAVE
GIFT
CERTIFICATES

TUNE UP KITS
CHAMMOIS
POLISH, WAX
HAND CLEANER
GARAGE REEL LIGHTS
FLOOR JACKS
HYDRAULIC JACKS
CHILTON SHOP MANUALS
TIMING LIGHTS
COMPRESSION GAUGES
TESTERS
DWELL METERS
CHARGERS
GAS ANALYZERS
ELECTRIC DRILLS

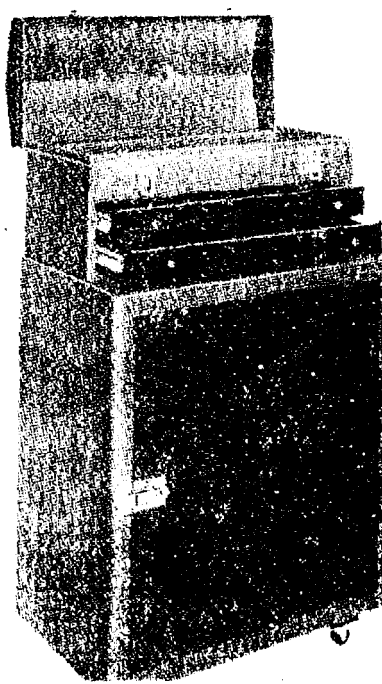
ACCESSORIES - PARTS - TOOLS - EQUIPMENT CHECK THESE CHRISTMAS SPECIALS

UTILITY CHEST and STORAGE CABINET

A super upper and lower cabinet set for garage use — at a price you can afford.

\$39.95

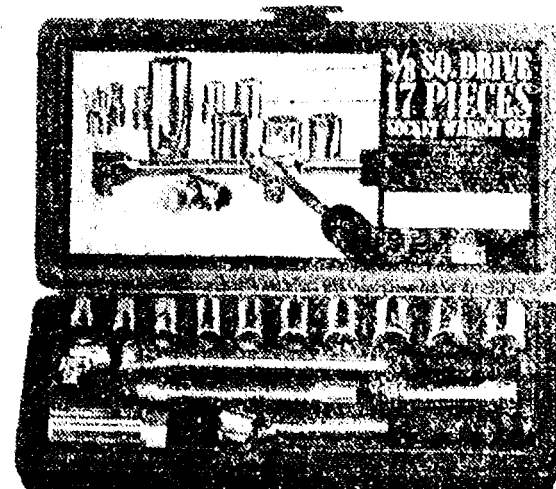
Complete upper and lower cabinet.



ALL WRIGHT TOOL SETS

All Wright tools unconditionally guaranteed. Pick out the set you want and we will deduct 20% off the price. Wright is a maker of quality tools for over 45 years.

20% OFF



Use Your Master Charge - BankAmericard - Personal Check

OPEN DAILY

8:30 a.m. to 5:30 p.m.

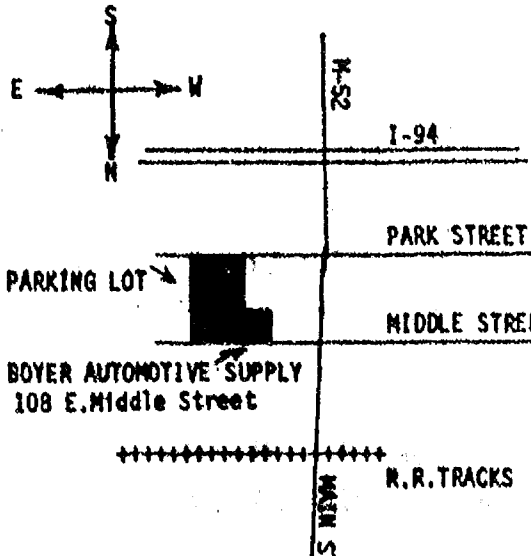
Saturday 8:30 to 4 p.m.

Closed Sundays

Serving Chelsea Area
Over 15 Years

Phone

475-1366



HEYDLAUFF'S

113 N. Main St. Ph. 475-1221

REPLACE BROKEN GLASS in STORM DOORS

with Warp's TOP QUALITY ACRYLIC PLASTIC

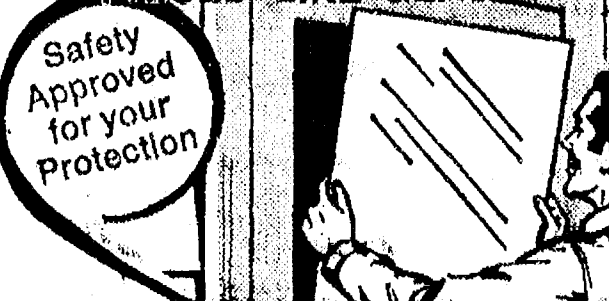
FLEX-O-GLAZE

PRICED LIKE GLASS

CLEAR LIKE GLASS, NON-YELLOWING, GUARANTEED SHATTER-PROOF

Flex-O-Glaze requires no special skills to install. It is easy to cut, saw and trim to fit wood or metal storm door frames. Comes in standard pre-cut sizes. Warp's Flex-O-Glaze is the ORIGINAL safety approved Plastic Glazing. Ask for it by name!

At Hardware, Lumber and Building Supply Stores
WARP BROS. Chicago 60651 Pioneers in Plastics For Over 50 Years



WHEN GLASS BREAKS IN SCREEN-STORM DOORS REPLACE WITH FLEX-O-GLAZE SHATTER-PROOF SAFETY PLASTIC



Be sure this mark of safety approval appears on every sheet

WE HAVE THE GENUINE!
Gambles

110 N. Main Ph. 475-7472

Rebekah Lodge Elects Officers For Next Year

Officers for 1978 were elected at the regular meeting of Chelsea Rebekah Lodge 130 Tuesday, Dec. 2. Elected to office were Mrs. Olla Veelin as noble grand; Mrs. Helen Harris as vice-grand; Mrs. Donna Feldkamp as the financial secretary and Mrs. Eulabee Packard as secretary for the 10th year; Mrs. Elsie Hinz as chaplain and Mrs. Mary Ann Coltrane as lodge deputy. Mrs. Nina Lehmann will be the junior past noble grand.

All appointed officers will be announced at the next regular meeting on Dec. 16.

Mrs. Harris was elected as the candidate to receive the decoration of chivalry next year.

It was moved to remember the elderly and shut-in members with boxes of cookies for Christmas time.

Each member was asked to bring or send two dozen more cookies for the packing of boxes after the next meeting.

Get-well cards were in order for members Mrs. Clara Johnson, Mrs. Dorothy Meynans and Mrs. Ida Nixon with a sympathy card to Mrs. Edith White.

A pot-luck supper will be held at 6 p.m. Dec. 16 prior to the meeting. Each member is asked to bring table service, a dish to pass and her family.

A birthday card shower will be held for Mrs. Lottie Alexander on Dec. 10. She is the only charter member left; her membership dates back to 1918.

Mrs. Hinz and Mrs. Hochrein were the evening's committee. Chairpersons for the Christmas supper will be Mrs. Lucille Altstaetter, Mrs. Hinz and Mrs. Harris. Coffee will be furnished.

MODERN MOTHERS

Modern Mothers Child Study Club had their annual Christmas dinner off. Co-hostesses were Sharon Dec. 9 at the home of Carol Flint, Hodgson, Janet Rossi and Gloria Greenleaf. Following a sing-a-long led by Lavonne Harris, members exchanged gifts, many of which were hand-made. The next meeting will be Jan. 13. Members will attend small group craft workshops.

The Chelsea Standard, Thursday, December 11, 1975



Mr. and Mrs. David Smyth

Beth Branch, David Smyth Wed At St. Barnabas Episcopal Church

Beth Branch and David Smyth were joined in marriage Saturday, Nov. 22 in an afternoon ceremony at St. Barnabas Episcopal church. Sixty-five guests attended the 4 p.m. ceremony officiated by the Rev. Jerrold F. Beaumont.

The former Miss Branch is the daughter of Mr. and Mrs. Duane Branch of 40 Butternut Ct. Mr. Smyth is the son of Mr. and Mrs. Gerald Smyth of Waterloo Rd.

The bride chose a gown of white polyester sheer organza, styled with a circular yoke with Venice lace trim. Pink satin ribbon circled the empire waist. Her full skirt was accented with a lace trimmed flounce hem. A short lace edged mantilla veil with a long chapel-length English illusion veil was held in place with a Venice lace. Carmelot head-piece. She carried a bouquet of white roses, stephanotis and baby's breath.

The bridegroom's sister, Denise Smyth, served the bride as maid of honor. She was dressed in a gown of pink polyester with a maroon halter top covered with a long sleeved pink jacket. She

carried a colonial bouquet of pink roses and baby's breath. Mark Smyth served his brother as the best man. Ushers were the bride's brother, Duane, and the bridegroom's brother, Chris.

For her daughter's wedding, Mrs. Branch chose a dress of pink polyester with full chiffon sleeves. Mrs. Smyth was dressed in a polyester gown of pale blue complemented with a jacket.

Following the ceremony, a reception for the couple was held in the home of the bride's parents. Guests came from Toronto, Owasco, Indiana, Union Lake, Lansing, Novi, Westland and Saline.

The bride is attending classes at Washtenaw Community College. Her husband is employed with Chelsea Milling. The couple now make their home at 212 Glazier Rd.

The United States paid 2 cents per acre for Alaska, 3 1/2 cents per acre for the Louisiana Purchase, 27 cents per acre for the Philippines, and \$294.70 per acre for the Virgin Islands.

CARPET REBIRTH

Give your carpet a new lease on life by cleaning it regularly.

JET SPRAY CARPET CLEANING

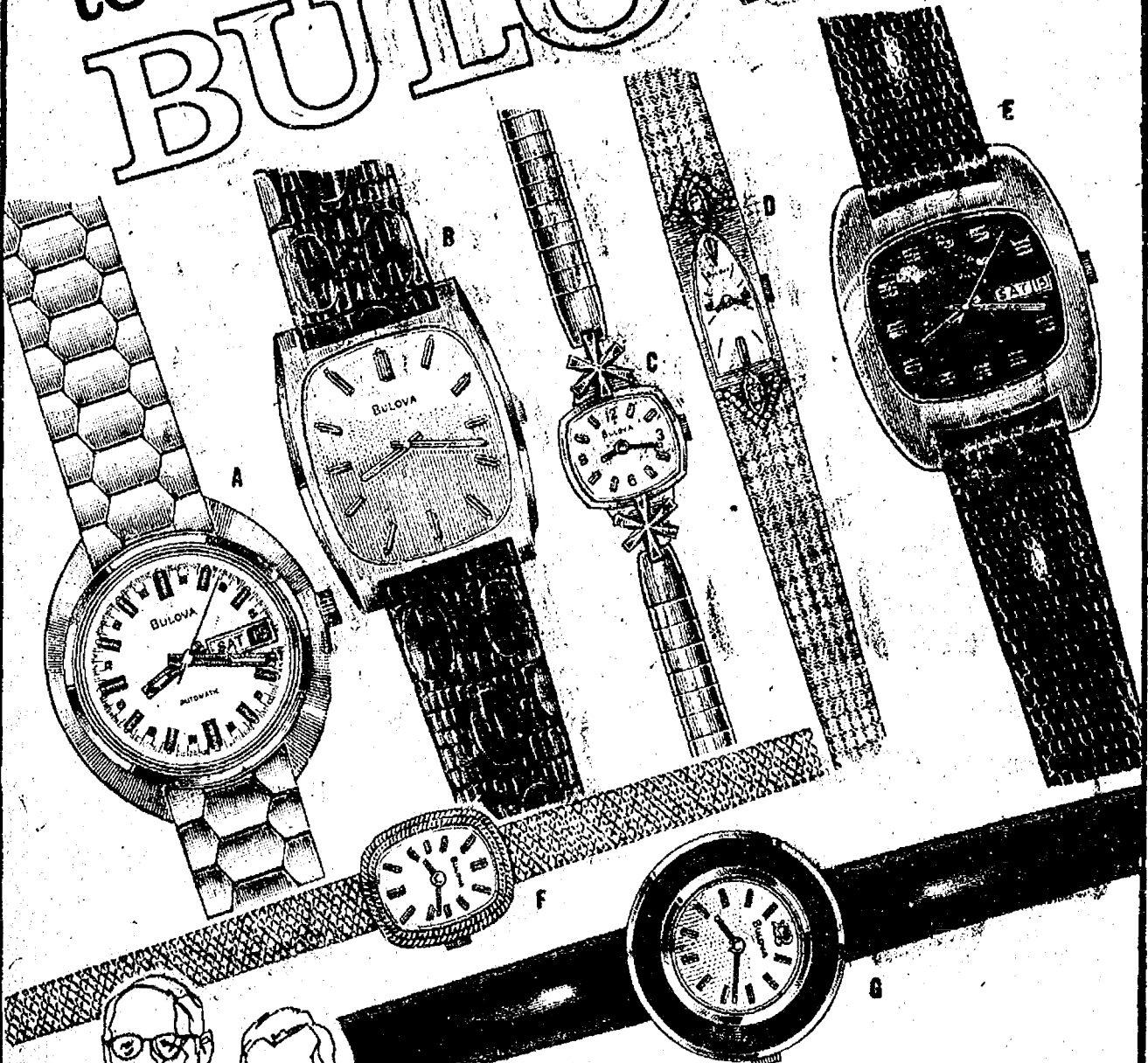
Use Your BankAmericard Phone: 761-3025 or 475-1509 Ask for John Lixey

Magic Mirror Beauty Salon

Open Tuesday thru Friday 9 a.m. to 9 p.m. Saturday, 8 a.m. to 3 p.m.

PHONE 665-0816

It's easy to choose the right BULOVA



Our selection of fine Bulova timepieces includes all the newest styles, colors and features. You'll find instant change date and day watches, automatics, dress and sports models and luxurious timepieces set with sparkling diamonds. And just as important, we carry Bulova in a complete range of prices.

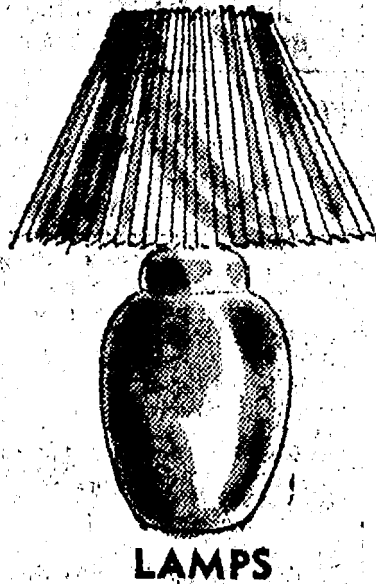
- A. Time, day and date handsomely styled in stainless steel. 17 jewels. Automatic. \$80.
- B. A 17 jewel classic with satintone case and champagne dial. \$60.
- C. Starburst ornaments highlight a lovely 17 jewel watch. \$65.
- D. Twin diamonds tip a 14K solid gold case with cathedral dial. 17 jewels. \$230.
- E. 23 jewel automatic with instant change day/date and matching brown dial and strap. \$85.
- F. Double braid design frames a silver-tone dial. 17 jewels. \$90.
- G. Colorful lucite ringed case with matching polished corium strap. 17 jewels. \$85.

WINANS JEWELERS

ADJUSTABLE READING LAMPS
Chrome and Brass finishes.
From \$59.95



FOLDING TRAY TABLE SETS
\$49.95

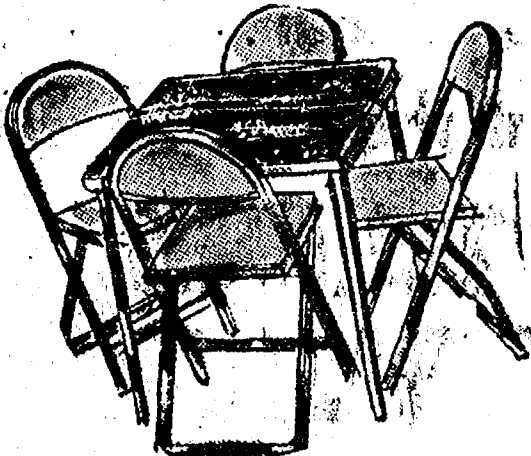


LAMPS

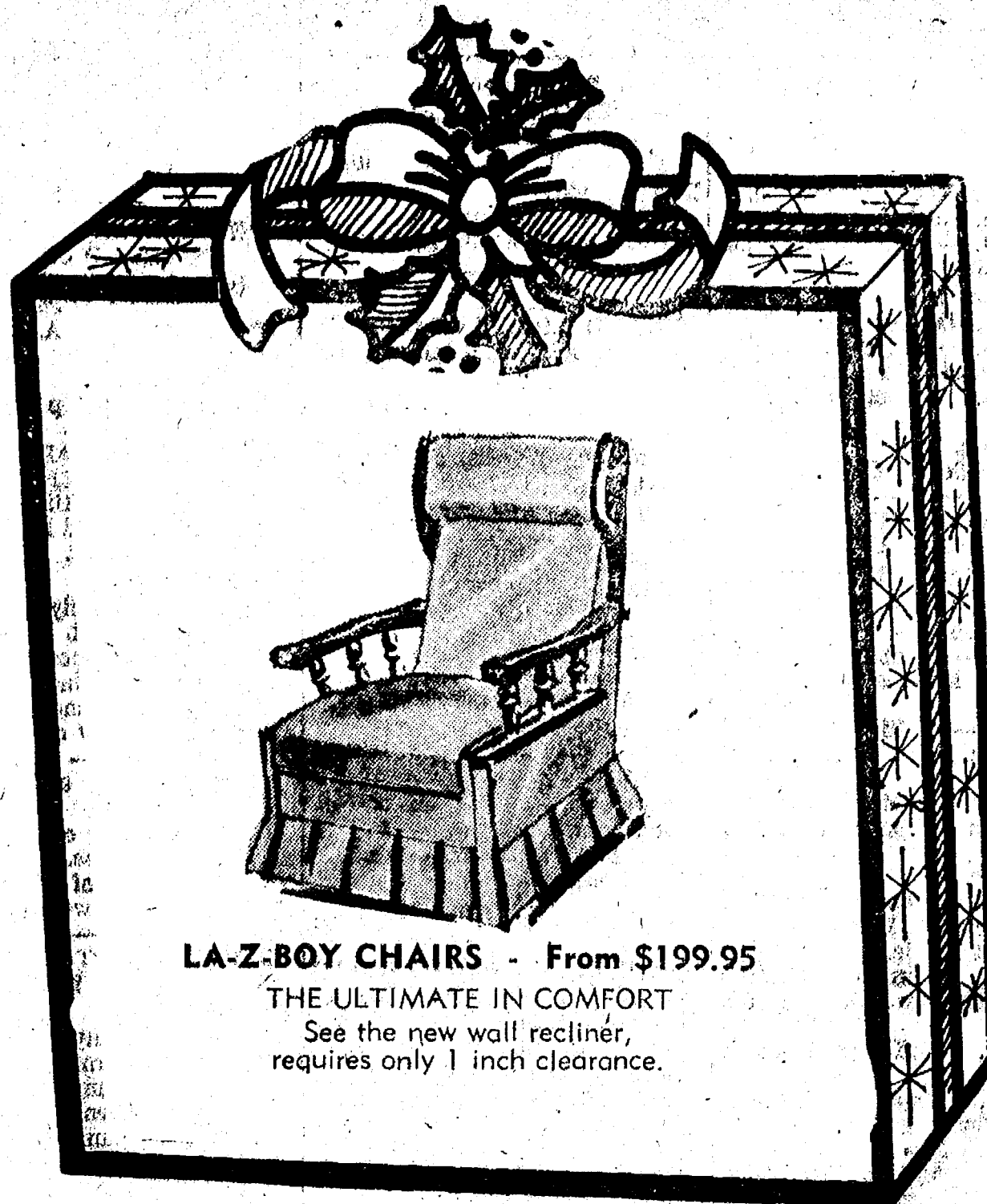
Wide assortment of styles and sizes.



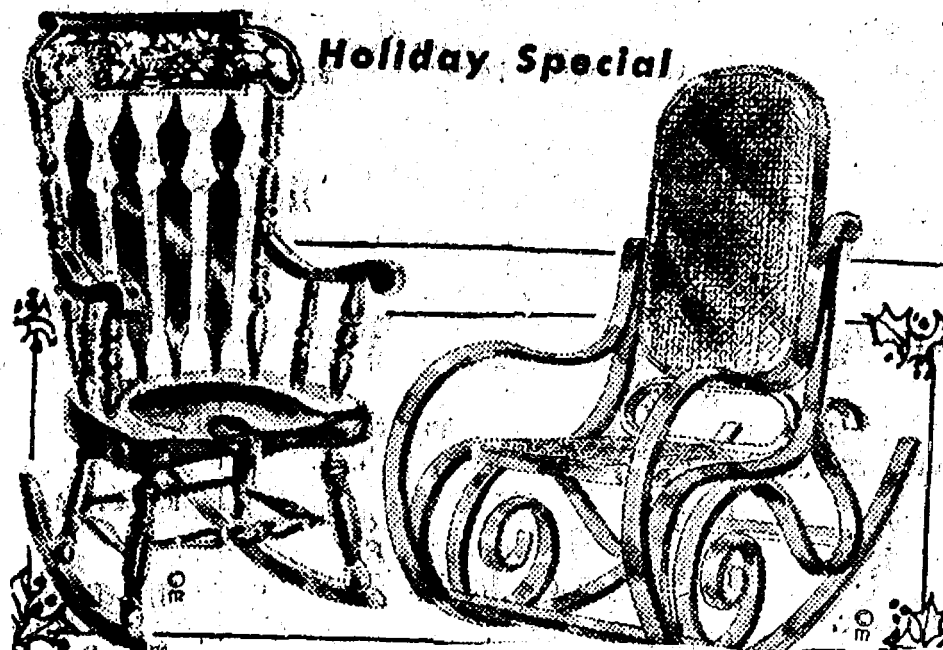
MODERN SWIVEL LOUNGE CHAIR and OTTOMAN
Chocolate, vinyl.
\$249.95



SAMSONITE BRIDGE SETS
From \$73.95

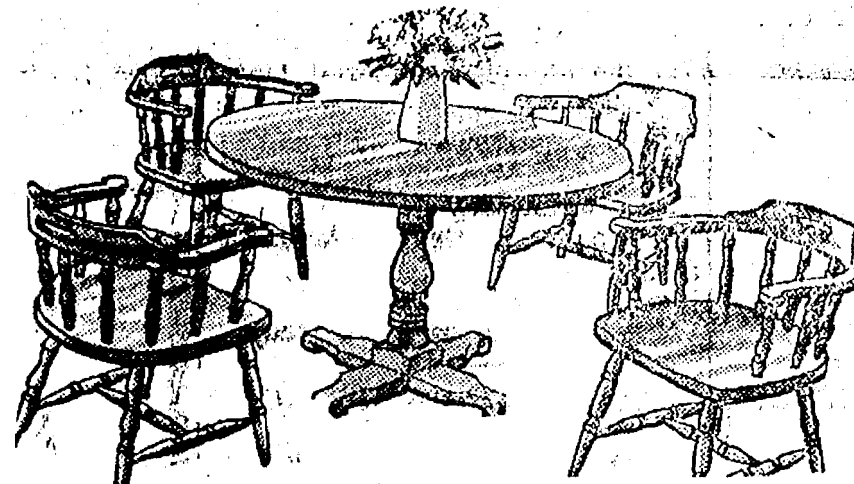


LA-Z-BOY CHAIRS - From \$199.95
THE ULTIMATE IN COMFORT
See the new wall recliner, requires only 1 inch clearance.



ROCKER GRANDFATHER
Dark pine.
\$127.50

BENTWOOD ROCKER
Walnut and natural.
\$139.95



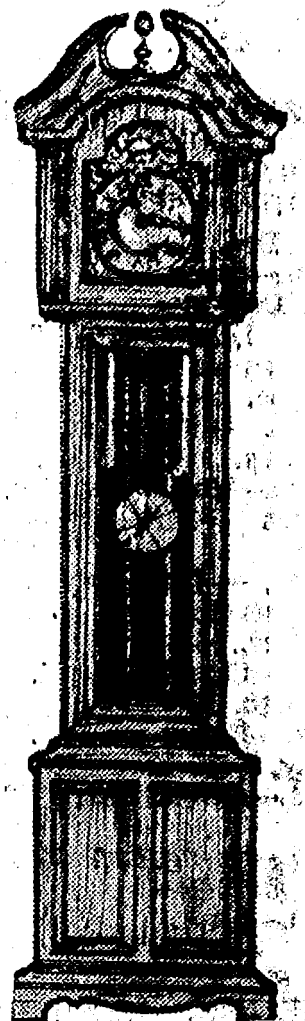
5-PC. DINETTE in pine and oak - \$399.95



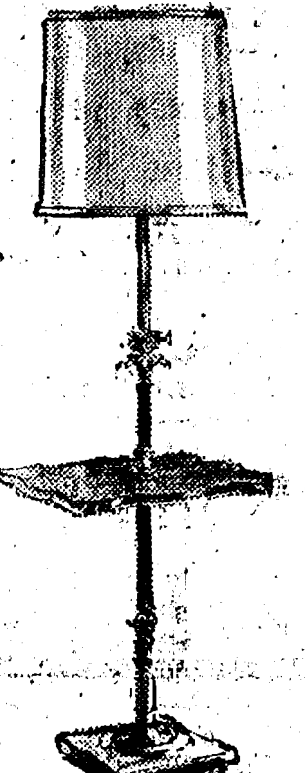
SLEEP SOFA SALE
SAVE 20% - Entire Stock



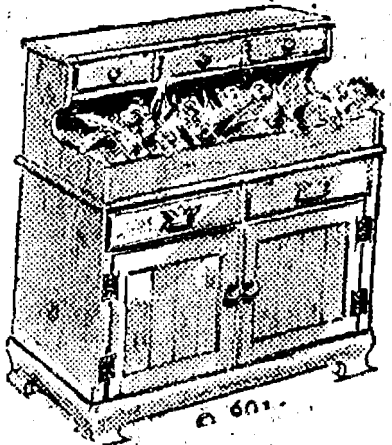
STACKING TABLES
Set of 3
\$29.95



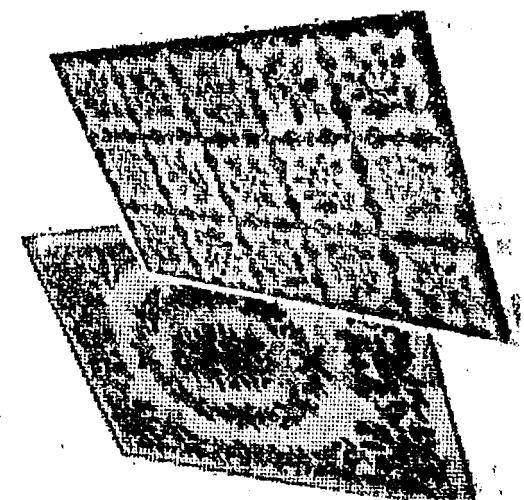
GRANDFATHER CLOCKS
Selection of styles and finishes.
From \$439.95



TRAY FLOOR LAMPS
Wood and metal.
From \$79.95



BACHELOR CHEST
BY HITCHCOCK
\$274.00



AREA RUGS
Beautiful assortment
From \$49.95

GIFT CERTIFICATE MERKEL

To _____
Present this Certificate to us for merchandise of your selection to the value of _____ Dollars
With all good wishes from _____
No. _____ AUTHORIZED BY _____

Stocking Stuffers
CANDLES
and ACCESSORIES
A table full.

\$5.00 or less

For That Little Something Extra
Choose from a wide selection of decorative gifts.
\$10.00 or less

Merkel
HOME FURNISHINGS

+ Services in Our Churches +

CONGREGATIONAL CHURCH
(United Church of Christ)
The Rev. Carl Schwarm, Pastor
Thursday, Nov. 11—
12:00 p.m.—Senior Citizens
Christmas program and dinner.
7:30 p.m.—Choir.
Sunday, Dec. 14—
9:00 a.m.—Confirmation.
10:30 a.m.—Sunday school and
worship. Christmas program by
Sunday school.
Monday, Dec. 15—
7:30 p.m.—Church Council.
Thursday, Dec. 18—
7:30 p.m.—Choir.

**OUR SAVIOR LUTHERAN
CHURCH**
1515 S. Main, Chelsea
The Rev. William H. Keller, Pastor
Thursday, Dec. 11—
7:30 p.m.—Choir.
Saturday, Dec. 13—
9:00 to 11:00 a.m.—Sunday
school Christmas service practice.
Sunday, Dec. 14—
9:00 a.m.—Sunday school and
Bible classes.
10:30 a.m.—Worship service.
12:00 noon—Christmas decorating.
7:30 p.m.—Sunday school
Christmas service.
Monday, Dec. 15—
7:30 p.m.—Church Council.
Tuesday, Dec. 16—
7:30 p.m.—Elders meeting.
Wednesday, Dec. 17—
7:30 p.m.—Advent Family Service.
8:15 p.m.—Evangelism Meeting.
Thursday, Dec. 18—
7:30 p.m.—Choir.

**ST. THOMAS
EVANGELICAL LUTHERAN**
Ellsworth and Haab Rds.
The Rev. Jerome Dykstra, Pastor
Thursday, Dec. 11—
4:15 p.m.—Confirmation class.
Saturday, Dec. 13—
10:00 a.m.—Christmas program
rehearsal.
Sunday, Dec. 14—
9:30 a.m.—Sunday school and
Bible class.
10:45 a.m.—Worship with Holy
Communion.
3:00 p.m.—Advent Festival of
Song.
Wednesday, Dec. 17—
8:00 p.m.—Advent service at St.
Thomas.
Thursday, Dec. 18—
4:15 p.m.—Confirmation class.

**NORTH LAKE
UNITED METHODIST CHURCH**
The Rev. David Stiles, Pastor
Every Sunday—
8:30 a.m.—Early service.
10:00 a.m.—Worship service. Re-
ceiving of new members.
12:00 a.m.—Sunday school.

**ST. JOHNS EVANGELICAL
AND REFORMED CHURCH**
(United Church of Christ)
Francisco
The Rev. Virgil King, Pastor.
Every Sunday—
10:30 a.m.—Worship service.
Sunday school.

ZION LUTHERAN CHURCH
Corner of Fletcher, Waters Rds.
The Rev. John R. Morris, Pastor
Saturday, Dec. 13—
9:00 a.m.—Youth Instruction.
10:45 a.m.—Junior Choir.
7:00 p.m.—All church Christ-
mas trimming.
Sunday, Dec. 14—
9:00 a.m.—Sunday school.
10:15 a.m.—Worship. Sunday
school practice after church.
1:00 p.m.—Youth and adult
fellowship.
Monday, Dec. 15—
7:45 p.m.—Senior Choir.

**FIRST UNITED
METHODIST CHURCH**
The Rev. Marvin H. McCallum,
Pastor
Thursday, Dec. 11—
9:00 a.m.—Elizabeth Circle will
meet at the home of Mrs. Marje
Daniels.
1:00 p.m.—Quilting Group will
meet at the home of Mrs. Fran
Lorenz.
6:30 p.m.—Weight Watchers
will meet in the social center of
the church.
Sunday, Dec. 14—
10:00 a.m.—Worship service.
Nursery provided. Lighting of the
third Advent candle.
10:20 a.m.—Church school.
Four-year-olds through the 6th
grade.
11:00 a.m.—Coffee and punch
hour.
11:15 a.m.—Junior, senior high
and adult church school.
Monday, Dec. 15—
8:00 p.m.—Council on Ministries
will meet in the educational unit.
Tuesday, Dec. 16—
9:30 a.m.—Charismatic Bible
sharing group will meet in the edu-
cational unit.
7:30 p.m.—Wesleyan Circle will
meet at the home of Mrs. Lillian
Konkin.
Wednesday, Dec. 17—
9:00 a.m.—Sarah Circle will
meet at the home of Mrs. Donna
Palmer.
12:30 p.m.—Ruth Circle meet-
ing and pot-luck in the Crippen
building.
1:00 p.m.—Phoebe Circle will
meet at the home of Mrs. Jane
Schaller.
3:30 p.m.—Kinder Choir.
4:00 p.m.—Glory Choir
4:30 p.m.—Praise Choir
8:00 p.m.—Chancel Choir.
Thursday, Dec. 18—
9:00 a.m.—Literature group will
discuss "Two from Galilee" in the
Litteral room.
1:00 p.m.—Quilting group will
meet at the home of Mrs. Mary
Kumpf.
6:30 p.m.—Weight Watchers will
meet in the social center of the
church.

**CHURCH OF JESUS CHRIST
OF LATTER-DAY SAINTS**
Meetings at
St. Barnabas Episcopal Church,
20500 Old US-12
Every Sunday—
11:00 a.m.—Priesthood meeting.
12:30 p.m.—Sunday school.
6:30 p.m.—Sacrament meeting.

CHURCH OF CHRIST
13601 Old US-12, East
Evangelist John M. Hamilton
Every Sunday—
10:00 a.m.—Church school.
11:00 a.m.—Worship service
Nursery will be available.
6:00 p.m.—Worship service.
Every Wednesday—
7:30 p.m.—Bible study.

FIRST ASSEMBLY OF GOD
The Rev. Thode B. Thodeson
Pastor
Every Sunday—
9:45 a.m.—Sunday school.
11:00 a.m.—Worship service.
7:00 p.m.—Midweek services.
Every Wednesday—
7:00 p.m.—Christ's Ambassa-
dors.
Every Friday—
1:00 p.m.—Ladies Bible study.

CHURCH OF CHRIST
13601 Old US-12, East
Evangelist John M. Hamilton
Every Sunday—
10:00 a.m.—Church school.
11:00 a.m.—Worship service
Nursery will be available.
6:00 p.m.—Worship service.
Every Wednesday—
7:30 p.m.—Bible study.

CHURCH OF CHRIST
13601 Old US-12, East
Evangelist John M. Hamilton
Every Sunday—
10:00 a.m.—Church school.
11:00 a.m.—Worship service
Nursery will be available.
6:00 p.m.—Worship service.
Every Wednesday—
7:30 p.m.—Bible study.

CHURCH OF CHRIST
13601 Old US-12, East
Evangelist John M. Hamilton
Every Sunday—
10:00 a.m.—Church school.
11:00 a.m.—Worship service
Nursery will be available.
6:00 p.m.—Worship service.
Every Wednesday—
7:30 p.m.—Bible study.

CHURCH OF CHRIST
13601 Old US-12, East
Evangelist John M. Hamilton
Every Sunday—
10:00 a.m.—Church school.
11:00 a.m.—Worship service
Nursery will be available.
6:00 p.m.—Worship service.
Every Wednesday—
7:30 p.m.—Bible study.

CHURCH OF CHRIST
13601 Old US-12, East
Evangelist John M. Hamilton
Every Sunday—
10:00 a.m.—Church school.
11:00 a.m.—Worship service
Nursery will be available.
6:00 p.m.—Worship service.
Every Wednesday—
7:30 p.m.—Bible study.

CHURCH OF CHRIST
13601 Old US-12, East
Evangelist John M. Hamilton
Every Sunday—
10:00 a.m.—Church school.
11:00 a.m.—Worship service
Nursery will be available.
6:00 p.m.—Worship service.
Every Wednesday—
7:30 p.m.—Bible study.

CHURCH OF CHRIST
13601 Old US-12, East
Evangelist John M. Hamilton
Every Sunday—
10:00 a.m.—Church school.
11:00 a.m.—Worship service
Nursery will be available.
6:00 p.m.—Worship service.
Every Wednesday—
7:30 p.m.—Bible study.

**FIRST UNITED
PRESBYTERIAN CHURCH**
Unadilla
The Rev. T. H. Liang, Pastor
Every Sunday—
9:45 a.m.—Sunday school.
11:00 a.m.—Worship service.

**ST. PAUL
UNITED CHURCH OF CHRIST**
The Rev. R. J. Ratzlaff, Pastor
Sunday, Dec. 7—
9:00 and 10:30 a.m.—Church
school.
10:30 a.m.—Worship service.
Tuesday, Dec. 9—
3:30 p.m.—Joyful Noise.

ST. MARY CATHOLIC CHURCH
The Rev. Fr. David Philip Dupuis,
Pastor
Mass Schedule:
Every Sunday—
4:00-5:00 p.m.—Confessions.
7:00 p.m.—Mass.
Immediately after 7 p.m. Mass—
Confession.
Every Sunday—
Winter schedule:
8:00, 10:00, 12:00 noon—Mass.
Summer schedule:
7:00, 9:00, 11:00 a.m.—Mass.

NORTH SHARON BIBLE CHURCH
Sylvan and Washburne Rds.
The Rev. William Ensen, Pastor
Every Sunday—
10:00 a.m.—Sunday school.
(Nursery will be available.) Junior
church classes.
11:00 a.m.—Worship service.
6:00 p.m.—Senior High Youth
meeting. Youth Choir.
7:00 p.m.—Evening worship ser-
vices. (Nursery available.)
All services interpreted for the
deaf.
Every Wednesday—
7:00 p.m.—Bible study and pray-
er meeting. (Nursery available.)
Bus transportation available: 428-
7222.

**FIRST UNITED METHODIST
Parks and Territorial Rds.**
Every Sunday—
9:15 a.m.—Morning worship.
10:00 a.m.—Sunday school.

CHURCH OF CHRIST
13601 Old US-12, East
Evangelist John M. Hamilton
Every Sunday—
10:00 a.m.—Church school.
11:00 a.m.—Worship service
Nursery will be available.
6:00 p.m.—Worship service.
Every Wednesday—
7:30 p.m.—Bible study.

CHURCH OF CHRIST
13601 Old US-12, East
Evangelist John M. Hamilton
Every Sunday—
10:00 a.m.—Church school.
11:00 a.m.—Worship service
Nursery will be available.
6:00 p.m.—Worship service.
Every Wednesday—
7:30 p.m.—Bible study.

CHURCH OF CHRIST
13601 Old US-12, East
Evangelist John M. Hamilton
Every Sunday—
10:00 a.m.—Church school.
11:00 a.m.—Worship service
Nursery will be available.
6:00 p.m.—Worship service.
Every Wednesday—
7:30 p.m.—Bible study.

CHURCH OF CHRIST
13601 Old US-12, East
Evangelist John M. Hamilton
Every Sunday—
10:00 a.m.—Church school.
11:00 a.m.—Worship service
Nursery will be available.
6:00 p.m.—Worship service.
Every Wednesday—
7:30 p.m.—Bible study.

CHURCH OF CHRIST
13601 Old US-12, East
Evangelist John M. Hamilton
Every Sunday—
10:00 a.m.—Church school.
11:00 a.m.—Worship service
Nursery will be available.
6:00 p.m.—Worship service.
Every Wednesday—
7:30 p.m.—Bible study.

CHURCH OF CHRIST
13601 Old US-12, East
Evangelist John M. Hamilton
Every Sunday—
10:00 a.m.—Church school.
11:00 a.m.—Worship service
Nursery will be available.
6:00 p.m.—Worship service.
Every Wednesday—
7:30 p.m.—Bible study.

CHURCH OF CHRIST
13601 Old US-12, East
Evangelist John M. Hamilton
Every Sunday—
10:00 a.m.—Church school.
11:00 a.m.—Worship service
Nursery will be available.
6:00 p.m.—Worship service.
Every Wednesday—
7:30 p.m.—Bible study.

CHURCH OF CHRIST
13601 Old US-12, East
Evangelist John M. Hamilton
Every Sunday—
10:00 a.m.—Church school.
11:00 a.m.—Worship service
Nursery will be available.
6:00 p.m.—Worship service.
Every Wednesday—
7:30 p.m.—Bible study.

BAHAI FIRESIDE
Every Thursday—
8:00 p.m.—At the home of Toby
Peterson, 706 S. Main St. Anyone
wishing to learn about the Baha'i
faith is welcome.

**WATERLOO VILLAGE
UNITED METHODIST CHURCH**
8118 Washington St.
Every Sunday—
11:15 a.m.—Worship service.

**BETHEL EVANGELICAL AND
REFORMED CHURCH**
(United Church of Christ)
Freedom Township
The Rev. Roman A. Reineck,
Pastor
Every Sunday—
10:00 a.m.—Worship service.

**ST. BARNABAS
EPISCOPAL CHURCH**
20500 Old US-12
The Rev. Fr. Jerrald F. Beaumont,
B.S.P.
Every Sunday—
10:00 a.m.—Holy Communion
first, third and fifth Sundays, and
8 p.m. every Wednesday.
10:00 a.m.—Morning prayer. Se-
cond and fourth Sundays. Church
school and nursery every Sunday.
Every Wednesday—
9:00 p.m.—Study and discussion
groups.
First Wednesday of every month
Bishop's Committee.
Third Thursday of every month—
Episcopal church women.

GREGORY BAPTIST CHURCH
The Rev. Paul White, Pastor
Every Sunday—
9:45 a.m.—Sunday school.
11:00 a.m.—Morning worship.
6:00 p.m.—Young people.
7:00 p.m.—Evening worship.
7:30 p.m.—Thursday mid-week
worship service.

IMMANUEL BIBLE CHURCH
145 E. Summit St.
The Rev. LeRoy Johnson, Pastor
Every Sunday—
9:45 a.m.—Sunday school, nur-
sery provided.
11:00 a.m.—Morning wor-
ship, nursery provided.
6:00 p.m.—Evening worship.
Every Wednesday—
7:00 p.m.—Family hour, prayer
meeting, and Bible study.

**ST. JOHN'S
UNITED CHURCH OF CHRIST**
Rogers Corners
The Rev. Carl Asher, Pastor
10:30 a.m.—Worship service.

**SALEM GROVE
UNITED METHODIST CHURCH**
3320 Notten Rd.
The Rev. Gerald R. Parker
Pastor
Every Sunday—
9:30 a.m.—Sunday school.
10:30 a.m.—Worship service.

**FIRST CHURCH OF CHRIST
SCIENTIST**
1883 Washtenaw Ave., Ann Arbor
Every Sunday—
10:30 a.m.—Sunday school, morn-
ing service.

SEC ROUND-UP:

Dreadnaughts Knock Off Novi With Strong, Balanced Attack

Encouragement and a lot of hard
work is what Chelsea's varsity
basketball team has needed and
will continue to need all season
long if they have any hope of
dashing their 0-3 record and mark-
ing up a number of victories to
their name. While even the coach,
Tom Ballistrere, admits to be some-
what discouraged, we hope to see
the team pick up the ball and
shoot. The season is still young!

Registrations Due In Cross-Country Ski Program

Registration is now under way for
the Washtenaw County Parks and
Recreation Commission's Cross-
Country Ski Program. Instruction
clinics began on Dec. 9 at Fuller
Recreation Area in Ann Arbor.
On Dec. 10, 16, 17, 20 and 21
and Feb. 3 and 4, sessions will
also be held at Fuller Park. West
Middle school in Ypsilanti will be
the site for the instruction clinics
on Jan. 13, 14, 27 and 28. On
Jan. 6 and 7, sessions will be held
at the Saline High school grounds.
The instruction clinics include
equipment at the site as well as
1½ hour of cross-country lessons.
A \$2 registration fee covers in-
struction costs.
A 1975-76 Cross-Country Ski Di-
rectory is also available, free of
charge, to interested skiers. The
updated brochure includes a com-
plete list of skiable areas in Washtenaw
county as well as equip-
ment and waxing information.
Those people wishing to partici-
pate in this year's program must
register in advance of the schedul-
ed clinic dates. Forms may be
obtained by mail or in person
from the WPCARC office, 2385 W.
Stadium Blvd., Ann Arbor, 694-2575.

METHODIST HOME CHAPEL
Chaplain Ira Wood, Pastor
Every Sunday—
8:45 a.m.—Worship service.

LOSE UGLY FAT
Start losing weight today! Money
back! MONADEX is a 100% natural
and easy to take. MONADEX will
help curb your desire for excess
fat. Eat less—weigh less. Contains
no dangerous drugs and will not
make you nervous. No strenuous
exercise. Change your life... start
today! MONADEX cost \$2.00 for a
20 day supply. Lower economy
size is \$5.00. Also try AQUATABS—
they work gently to help you lose
weight. AQUATABS cost \$2.00 for a
20 day supply. "All that works" is
guaranteed and sold by:
CHELSEA DRUG STORE
101 N. Main St., Ann Arbor, 964-1100

Milan 42, Brighton 45—
This SEC conference opener for
both teams was held at 46-46 until
one minute and five seconds re-
mained in the game last Friday
evening when Milan's Kurt Ding-
man hit on the foul shot for the
five-point lead and victory.

The game broke open in the
first quarter with Milan leading,
25-13, thanks to double figure
scorers Eric Wuster who put in
18 and Dingman who shot a 20-
point total.
High scorer for Brighton was
Tom Babineau with 13 while Neil
Larson and Dean Clark added 12
points each. Milan is 3-1 over-all.
The game was Brighton's first de-
feat in three.

DEXTER 74, Novi 48—
Dexter High smashed Novi Fri-
day evening, 70-48, opening their
SEC play and marking up a 2-2
record for the season. It was the
Wildcats' first game.

The Dreadnaughts' victory came
in the final eight minutes of play
when the Wildcats could no longer
hold neck and neck with their op-
ponents. Despite the 25-point scor-
ing of Novi player Bill Georgio
alone, it was reportedly the Dread-
naughts' balanced play that gave
them the game. High scorers for
Dexter were Bill Muccio and Dave
Sing with 18 points, Bruce Vail
with 12 and Mark Ianni, 10.

Lincoln 64, Chelsea 32—
Aggressive playing by their op-
ponents, poor shooting and general-
ly poor play resulted in numerous
turnovers to Lincoln last Friday
evening giving them the victory,
64-32. According to all reports
the Bulldogs were easily defeated
as they were outscored, 16-6, in
the first quarter and 20-10 in the
second period.
High scorer for Lincoln was
Mike Williams with 16 points.
Randy Guenther, Chelsea's high
scorer, could only manage to put
in six points.

Southeastern Conference opener
for Saline and South Lyon was

postponed Friday evening because
of a power failure in Saline.

Firemen's Auxiliary Needs Food Items For Christmas Boxes

Chelsea Firemen's Auxiliary will
begin packing Christmas baskets
next week for some 50 to 55
needy area families and accord-
ing to the group's secretary,
Beverly Ives, canned goods and
non-perishable items are still need-
ed to help make this Christmas
one these families may fondly re-
member.

Mrs. Ives said that a box has
been placed in the Municipal
Building at 104 E. Middle St. where
food items may be dropped until
Dec. 18. The baskets will be dis-
tributed Friday, Dec. 19 from noon
on at the Sylvan Town Hall.

The Auxiliary will supply 100
pounds of potatoes for the baskets
and are stocked with fresh fruits.
However, vegetables, dried nuts
and fruits and any boxed goods
that will not perish are still needed.
Venison has been donated by the
Department of Natural Resources.
This is the first year that the
Auxiliary has handled the Christ-
mas baskets program for Chelsea
Social Services. Further questions
may be answered by phoning Mrs.
Ives at 475-7529.

First Electric Light

The first public demonstration
of the electric light took place in
Menlo Park, N.J., on Dec. 31, 1879.
After countless failures, Thomas
Edison had been successful in
getting his electric light to burn
for 40 hours in October of that
year. By New Year's Eve, he
was ready to show it to the press.
The place he chose for the demon-
stration was the parlor of the Sarah
Jordan Boarding House near his
Menlo Park Laboratory. Today,
both the boarding house and labor-
atory are among the historic
buildings at Greenfield Village in
Dearborn.

GIRL SCOUT NEWS

TROOP 676—
Troop 676, led by Karen La-
Vigne and co-leader Joy Thorne is
composed of 19 girls. The troop
plans to elect a scribe in the
near future, who will report week-
ly to The Standard. At our Dec.
2 meeting we made some dough
ornaments. At the next meeting
months. We plan to take them to
the Methodist Home Dec. 16 where
they will decorate the tree and
sing carols for the residents.
The troop will go caroling Dec.
22. They will meet at Longworth
Plating Co. at 4 p.m., returning
to the building for hot chocolate
and cookies.

TROOP 145—
Brownie Troop 145 started work-
ing on our Christmas project.
Next week we will walk uptown
and buy a gift for the social ser-
vices for a needy family.
Shelley Boham, scribe.

TROOP 689—
Girls Scout Troop 689 met last
Wednesday, Dec. 3 at St. Mary's
school. We worked on our Christ-
mas project to give our mothers
and fathers. Karen Miller brought
treats.
Beth Heller, scribe.

Rockwell Plant Plans Combined Retirement, Christmas Dinner

Bill Yukich and Clifford Bolton
will be honored at the Rockwell
International Combined Christmas
and Retirement dinner Sunday,
Dec. 14. The dinner will be held
at the UAW Union Hall from 2 to
5 p.m.
A spokesman for Rockwell said,
"We hope to make this a semi-
annual affair, honoring those per-
sons who have retired from the
company in the past six months.
All retirees and employees of
Rockwell International are invited
to attend and to bring their wives
and husbands. Those attending
are requested to bring a dish to
pass and their own table service."

"SWINGER"

FOR SALE

11-ft. Pick-up Camper

Great for family, hunters or snowmobilers.

Sleeps five adults very comfortably. \$1250.

3250 CENTRAL ST., DEXTER

DUNBAR'S DEXTER LOCKER

PAUL DUNBAR, OWNER
8083 MAIN ST., DEXTER PHONE 426-8466

HAMBURGER and WIENERS

69¢ lb. in 10-lb. packages

Rebate

98¢ lb. BEEF SIDES Pre-cut \$20

\$1.19 lb. HIND QUARTERS Ready \$10

86¢ lb. FRONT QUARTERS To Go \$10

Buy Ready-Cut Sides and Save

Call for More
Information

Discount to Civic Groups - We Accept Federal Food Stamps

CUSTOM SLAUGHTERING & PROCESSING

Take A Christmas Shopping Break on Friday Evening

Have A Snack
Or A Meal

at the
**CAPTAINS
TABLE**

FRIDAY SPECIAL:

SEAFOOD PLATTER

Lake Perch, Shrimp and Scallops
served with potato, salad and roll

Only \$3.50

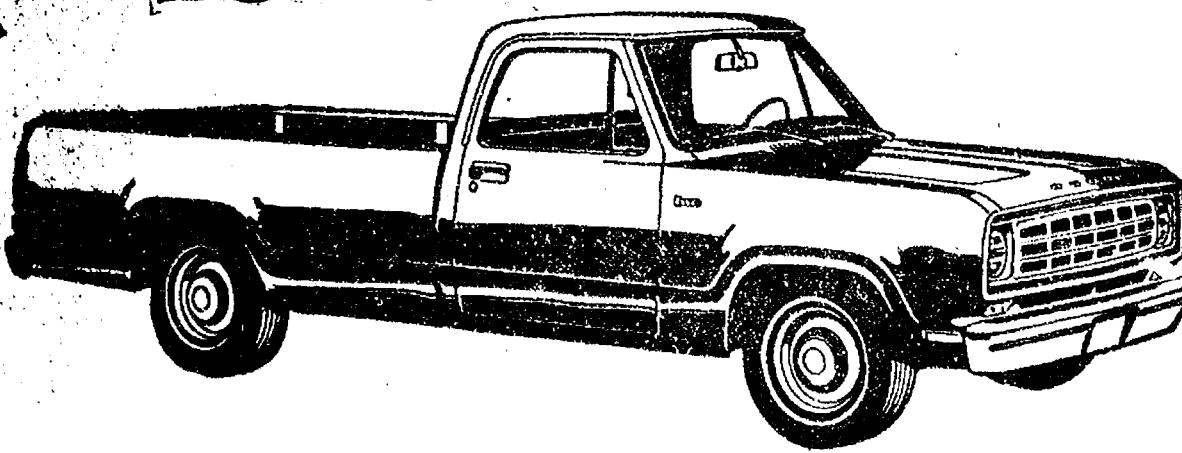
The
**CAPTAINS
TABLE**

8093 Main St., Dexter

426-3811

Open Monday thru Wednesday 6 a.m. to 9 p.m.
Thursday, Friday 6 a.m. to 10 p.m.
Saturday 7 a.m. to 9 p.m.

CLOSED SUNDAYS



If you've been holding off buying a
pickup, just waiting for the right numbers
to come up, then now's the time to move.
Because now—the truck that's got it
all—charges less than the rest to get it all.
The 1976 Dodge D100 Conventional
Pickup is now sticker-priced at only
\$3,637.

Sure, you can get everything you'd
expect in a Dodge Pickup. Options like
power steering, power brakes and
automatic transmission. Plus a whole
lot more. And check out this list of
D100 features:

- Biggest standard payload
- Standard temperature gauge

- Higher output alternator
- Higher output battery
- Standard courtesy light switch

When you add 'em all up—and throw
in that low sticker price of only \$3,637
—it's a cinch to see
why the pick of the
pickups is the 1976
Dodge.

*Manufacturer's
suggested retail
price for a 1976
D100 Dodge Pickup,
excluding destination
charges, taxes, and
optional equipment.



Dodge

VILLAGE MOTOR SALES, INC.

1185 MANCHESTER ROAD

CHELSEA, MICHIGAN



HOLIDAY CHEER: Patients at Chelsea Community Hospital were entertained with a Christmas party last Sunday afternoon by the hospital's volunteers. Punch and cookies helped to promote holiday cheer. Pictured from left receiving Christmas goodies from Mrs. Gene (Neva) Jordan who heads up the hospital volunteers are Mrs. LaVerne Coy, a guest, LaVerne Coy and Lulu Walt.



GIVE BLOOD: Winners of the Jaycee Poster Contest held among students at the elementary and junior high to promote their annual holiday blood drive encourage area residents to "Give Blood." Head of the poster contest, Bob Meyer (right rear), said that there were so many quality posters that the Jaycees were forced to do away with first, second and third prize classifications and simply award five youths with \$5 cash prizes for their efforts. Pictured with Jaycees Howard O'Dell, Mitch Zink and Meyer are, from left, Jeff Koeple, Ken Lindow and Kim Forner from the elementary schools, and Beach Middle school students Beth Merkel and Linda Hart. The winning posters will be displayed in prominent places around town. The blood bank clinic is slated for Dec. 20 at the Fair Service Center.

Advertise Your Auction in The Chelsea Standard

FOR PROFIT



Feed Formulas Tested, Proved To Get Results

Extra proteins, vitamins and minerals in proper balance, scientifically blended, make our feeds real profit producers for you.

Farmers' Supply Co.

Phone GR 5-5511

St. Louis School Notes

The boys at St. Louis school have spent the past week traveling twice to Ann Arbor, winning both their hockey and basketball games, being entertained by a group of Hawaiian dancers and decorating their school with greens and trees for the Christmas holiday.

Last Friday evening, the boys attended a performance of "The

JV Cagers Defeated By Lincoln, 48-37

"We played well enough to win at times," remarked Chelsea's junior varsity basketball coach, Paul Terpstra, "but some fundamental mistakes at key times cost us the victory."

The junior Bulldogs were defeated in their opening league game of the season played Friday night with Lincoln, 48-37. Their season record stands at 0-3.

In the first quarter of play, it looked as though the Bulldogs might have a chance at a victory when they led in the scoring efforts. However, the Lincoln players rebounded in the second, third and fourth quarters for the victory, outscoring the Bulldogs with a wide margin in all but one quarter.

The Bulldogs had poor field goal shooting and were out-rebounded, 44 to 38.

High scorer for the team was Chris Smyth with a double figure of 13. Smyth was also high rebounder for the evening with 12. Randy Harris also put a double figure on the board, shooting 12 points. Kurt Owings had eight, while Dave Schrottenboer and Mark Feeney each had two. Schrottenboer also had 10 rebounds.

The Bulldogs will meet their first opponents on the home court this week-end. Friday evening they will play Novi and Saturday they will face Brighton. Both teams are in the SEC league.

Lighthouse" at Tappan school in Ann Arbor. According to Fr. Umberto Mellare, the boys were impressed with the dramatic skits about the life of Jesus, the singing, dancing and rock music.

On Saturday, the older boys accompanied by their teacher, Ms. Kimbol, went to see "Jaws" after which they were treated to lunch at The Big Boy. Fr. Umberto reported that especially for the older boys who will soon have to leave the school, exposure to public places is important. "They must learn manners and how to behave properly," he remarked. Saturday was such an experience for them.

St. Louis school is all the more more beautiful this month, thanks to the contributions of trees and decorations from the Civitan Club in Ann Arbor, and to the help of its members and their families who joined the boys for a Christmas trimming. Following the decorating of the trees, carols were sung and refreshments were served.

The girls from "Our Lady of Province School" in Northville visited their brother school Sunday where they were entertained by a group of Hawaiian dancers. Fr. Umberto said that the group, which has appeared once before at the school, plans to go professional. As a treat for the boys they brought a male and female gerbil, suggesting the boys raise money by mating and selling the furry animals.

When it comes to sports the boys at St. Louis school rally together for a victory. This week-end the boys won both their hockey game, 8-3, and their basketball game, 82-68. Special recognition is given to the team's basketball star, Leroy Sims.

Fr. Umberto reports that since the weekly appearance of St. Louis school notes in The Standard, there has been an awakening not only in the Chelsea community but in Ann Arbor and Jackson as well. "The

notes are getting around and we are very thankful for the recognition we have received as a result of them."

Who Said That?

Wives are similar to fishermen, in that they often brag about the one that got away, and complain about the one they caught.

A Standard Want Ad Gets Results!

MICHAEL'S HAS HAD IT!

America's Finest Furniture and Accessories
BRAND NAMES YOU KNOW AND TRUST!

Terms Available
HURRY! FIRST COME FIRST SERVE!

We're Going Out Of Business

It's true - Michael's Home Furnishings is going out of business - and we'll be gone by Christmas! So save now: have the new furniture you want in time for holiday entertaining. We can still arrange credit. IT'S OUR LOSS - IT'S YOUR GAIN! HURRY IN FOR THE BEST SELECTION! \$50,000 worth of name brand furniture MUST GO BEFORE CHRISTMAS!

Thousands of Dollars Worth of Traditional, Contemporary, Colonial, Modern, Mediterranean Furniture & Accessories.

BEDDING - BEDROOMS
LIVING ROOMS
DINING ROOMS
FAMILY ROOMS - TABLES
DESKS - CHAIRS - RECLINERS
and much much more!

EVERYTHING MUST GO!

OPEN DAILY 9-9 - SUNDAY NOON-6

Regular \$489 Value
MODERN BROYHILL WALNUT 4-PC. BEDROOM
\$296⁰⁰

Regular \$189 Value
TRADITIONAL MATELASSE CHAIR
\$97⁰⁰

Regular \$699 Value
MEDITERRANEAN BROYHILL PECAN 6-PC. DINING ROOM
\$496⁰⁰

Regular \$719 Value
COLONIAL 5-PC. BEDROOM
\$431⁰⁰

FIRST COME - FIRST SERVE! EVERY ITEM MUST GO! DON'T MISS THIS ONE!

Regular \$199 Value
MAPLE BUNK BED
\$97⁰⁰

Regular \$499 Value
CONTEMPORARY 2-PC. LIVING ROOM
\$292⁰⁰

Regular \$599 Value
COLONIAL 3-PC. LIVING ROOM
\$345⁰⁰

Regular \$699 Value
COLONIAL PINE 2-PC. FAMILY ROOM
\$357⁰⁰

FREE PARKING - BRING YOUR STATION WAGON, TRUCK OR U-HAUL FOR INSTANT DELIVERY!

Regular \$329 Value
RECLINER
\$197⁰⁰

Regular \$269 Value
TWIN SIZE HERCULON SLEEPER SOFA
\$146⁰⁰

Regular \$139 Value
MODERN WALNUT 6-PC. DINING ROOM
\$88⁰⁰

Regular \$219 Value
7-PC. MEDITERRANEAN DINING ROOM
\$117⁰⁰

WE CANNOT GUARANTEE QUANTITIES - FIRST COME - FIRST SERVE!

Regular \$499 Value
5-PC. CHERRY BEDROOM
\$349⁰⁰

Regular \$219 Value
OCCASIONAL CHAIR
\$121⁰⁰

LIVING ROOMS
\$539 SOFAS go at \$399
\$599 LIVING ROOMS go at \$444
\$499 LIVING ROOMS go at \$292
\$699 FAMILY ROOMS go at \$357

DINING ROOMS
\$139 DINING ROOMS go at \$ 88
\$219 DINING ROOMS go at \$117
\$699 DINING ROOMS go at \$499
\$399 DINING ROOMS go at \$249

BEDROOMS
\$719 BEDROOMS go at \$431
\$439 BEDROOMS go at \$296
\$199 BUNK BEDS go at \$ 97
\$499 BEDROOMS go at \$349

OCCASIONAL PIECES
\$329 RECLINERS go at \$197
\$269 SLEEPERS go at \$146
\$189 CHAIRS go at \$ 97
\$219 CHAIRS go at \$121

Regular \$399 Value
5-PC. DINING ROOM
\$249⁰⁰

Regular \$599 Value
QUEEN SIZE SLEEPER SOFA
\$449⁰⁰

All Sales Final - No Refunds - No Exchanges - No Service

NOW OPEN DAILY 9-9, SUNDAY NOON - 6

MICHAEL'S HOME FURNISHINGS

GOING OUT OF BUSINESS!

TERMS AVAILABLE

5315 Occidental Hwy., Tecumseh
Across From Fisher Body Plant
Ph. 423-3220

Enjoy Life...

Eat Out

TUESDAY NIGHT

at

The Captains Table

DEEP-FRIED CHICKEN \$2⁷⁵

All You Can Eat!

Included with the meal — French Fries, choice of Salad, and Buttermilk Biscuits with Butter and Honey.

8093 Main St., Dexter 426-3811

Monday, Wednesday, 6 a.m. to 9 p.m.
Thursday and Friday, 6 a.m. to 10 p.m.
Saturday, 7 a.m. to 9 p.m.

Community Calendar

★ ★ ★

Rogers Corners Farm Bureau Christmas party, Freedom Township Hall, Friday, Dec. 12. Pot-luck at 7 p.m.

Lyndon Township Planning Commission meets the second Thursday of the month at the Town Hall at 8 p.m.

Young Homemakers Christmas party Saturday, Dec. 13, 8 p.m. at Rogers Corners Zion Lutheran church. Bring sandwiches and cookies.

Christmas progressive dinner for Town and Country Child Study Club members and husbands, Saturday, Dec. 13. Appetizers at 6:30 at the home of Mr. and Mrs. Brian Lawton. Dinner at 7:30 at the home of Mr. and Mrs. William Eisenbeiser, and dessert following at the home of Mr. and Mrs. Ken Larson.

Olive Lodge No. 153 F&AM, installation of officers Saturday, Dec. 13, 7:30 p.m. at the Temple. Masons and friends invited.

Chelsea Community Farm Bureau December meeting Thursday, Dec. 11 at the home of Mr. and Mrs. Walter Zeeb beginning with 7 p.m. pot-luck supper.

Inverness Snowmobile Club Christmas Dance, Dec. 13 at 9 p.m., Inverness Country Club. Tickets through committee chairman or Milo Vogel, 475-9382 or Dick Kolander, 475-1719.

Past Matrons of Olive Chapter No. 108, OES, pot-luck on Dec. 11, 12:30 p.m. at the home of Mrs. Lionel Vickers. Gift exchange.

Spaulding for Children Christmas cards are now on sale. They may be purchased at Spaulding for Children agency at 3660 Waltrous Road, Chelsea, Michigan. We are open from 9 a.m. to 5 p.m. Monday thru Friday. Or phone, we will send you an order blank at 475-2500 or 475-8087.

Kinder Klub Christmas meeting scheduled for Dec. 9 has been changed to Dec. 16 at the home of Jean Haab. Christmas gifts will be exchanged and there will be an auction of baked goods.

Chelsea Jaycees Annual Blood Drive for holiday accident victims will be held Saturday, Dec. 20. Contact Howard O'Dell at 475-8189, Bob Meyer at 475-1277, or Bob Ponte at 475-9191, if you care to donate blood.

Lyndon Township Board meets the third Thursday of the month at the Town Hall at 7 p.m.

Inquiries regarding the Chelsea blood bank may be directed to Harold Jones in the event that Mrs. Dudley Holmes is unavailable, or to Robert Moyer, American Red Cross in Ann Arbor, 971-5300.

Chelsea Co-Op bake sale, Dec. 13, 8:30 to 12, Longworth Plating. Santa will be there.

Congressman Bob Carr's Mobile Office Van will be in Chelsea from 12 noon to 1:30 p.m., Monday, Dec. 22.

Chelsea Jaycees first Tuesday of every month. Board meeting, fourth Tuesday of every month at Chelsea Lanes. Meetings begin at 7:30 p.m., guests are welcome.

Sylvan Township Board meeting the first Tuesday of the month, at 7 p.m., at Sylvan Township Hall.

American Legion and Auxiliary hospital equipment available by calling Guy Freysinger at 475-1901.

Chelsea Home Meal Service delivers one hot meal a day to elderly and disabled living in the Chelsea area. For information call 475-8014 or 475-2923.

Chelsea Co-Op Nursery applications for 1975-76 classes are now being taken. For information, call Jearl Mull, 426-8822 or Leslie Bowers, 475-1401.

Christmas party for all Rockwell employees Local 437 Union Hall Sunday, Dec. 14, 2-5 p.m. All Rockwell employees and retirees invited to attend.

Wrestlers Win...

(Continued from page one)

Dennis Bauer took his opponent to a 13-0 score before the Huron wrestler was disqualified for stalling.

Chelsea was ahead by only five points as James Bollinger walked on the mat at heavyweight. Bollinger came through with a fine second period pin to end the grapplers' scoring.

Bareis remarked, "It was a pretty decent team we defeated and I am pleased with the progress of the young wrestlers."

DEATHS

Florence L. Palmer Was Nursing Supervisor at Detroit Hospital Until Retired

Florence L. Palmer, R. N., of Chelsea, formerly of Detroit, died Dec. 3 at the Chelsea Community Hospital. She was 74 years of age.

She was born May 24, 1901. She graduated from the University of Michigan School of Nursing in 1928. She was a nursing supervisor at Herman Keiser Hospital in Detroit for 31 years before retiring in August of 1969.

She is survived by three nieces, Mrs. Lowetta (Soper) Haines of Pinckney; Mrs. Evelyn (Soper) Patton of Howell; Mrs. Lucia (Soper) Skoman of Ann Arbor; three nephews, Rood Soper of Litchfield; Clyde Soper of Dearborn and Carl Soper of South Attleboro, Mass.; five cousins, Mrs. Sylvia Bitten; George L. Palmer of Chelsea; Mrs. John (Lola) Moore of Chelsea; Mrs. Brig (Winifred) Young of Fort Walton Beach, Fla.; Mrs. James (Mary) Becker of Miami, Fla.

Funeral services were held Friday, Dec. 5 at 2 p.m. at the Staffan Funeral Home with the Rev. Marvin H. McCallum officiating. Burial followed in Oak Grove Cemetery.

Ray Morehouse

Former Chelsea Resident Dies at Belleville Rest Home

Ray Morehouse, a resident of the Taylor Rest Home in Belleville, died Sunday, Dec. 7 at the home following a brief illness. Mr. Morehouse was born in 1905.

His wife, Ruth, preceded him in death in April of 1975. The couple had no children. There are no survivors.

Mr. Morehouse was employed with Chelsea Products in Chelsea as general manager for seven years.

Funeral services were held Wednesday, Dec. 10 at 1 p.m. at the Roberts Brothers Funeral Home in Belleville, with the Rev. Wilson F. Wood officiating. Burial followed in Wodlawn Cemetery, Detroit.

LIBERTIES

A son, Adam Lee, Nov. 30 at St. Joseph Mercy Hospital, Ann Arbor, to Mr. and Mrs. Donald Erskine of 85 S. Fletcher Rd. Maternal grandparents are Mr. and Mrs. Julius Blaess. Paternal grandparents, Mr. and Mrs. Glen Erskine.

A daughter, Christine Nichole, Nov. 23 at St. Joseph Mercy Hospital, Ann Arbor, to Mr. and Mrs. Tim Ehnlis, 436 McKinley. Maternal grandparents are Mr. and Mrs. Russell Patrick of Chelsea. Paternal grandparents, Mr. and Mrs. Alwin Ehnlis of Ann Arbor.

Listed in Who's Who Among College Students

Ann Barnes Kempainen is among 49 Western Michigan University students who have been selected for the 1975-76 edition of "Who's Who Among Students in American Universities and Colleges."

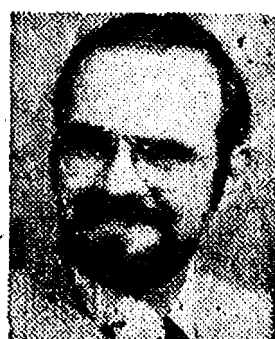
The list is composed of seniors nominated by the University because they are outstanding in scholarship, general citizenship, leadership, extra-curricular activities and future promise.

The Who's Who winners received their certificates of recognition at an awards banquet Dec. 10 in the WMU Center's west ballroom.

Mrs. Kempainen is the daughter of Mr. and Mrs. Jack Barnes of 9 Maple Ct.

You and Your FARM

... one of the reasons we're in business. The first with a Farm-owners policy, the first with Agropol, the first with an environmental protection endorsement. All at a fair price. Check the facts



DAVE ROWE

107 1/2 S. Main
Ph. 475-8065

FARM BUREAU
INSURANCE
GROUP, INC.

Farm Bureau Mutual • Farm Bureau Life
Community Service Insurance • Community Service Acceptance



ENJOYING MAGIC TRICKS: Chelsea Kiwanians treated area children to a Christmas party Monday evening that not only included a visit with Santa Claus and presents, but a magician too. Here (from left) Jeff Staebler, Robert Benedict, Bruce Young and Kim Collins participate in a rope trick with magician Daryl Hurst of the Ann Arbor Magic Co.

A Standard Want Ad Gets Results!

This Christmas...a MAYTAG

WASHERS DRYERS
DISHWASHERS

BIG SAVINGS NOW!

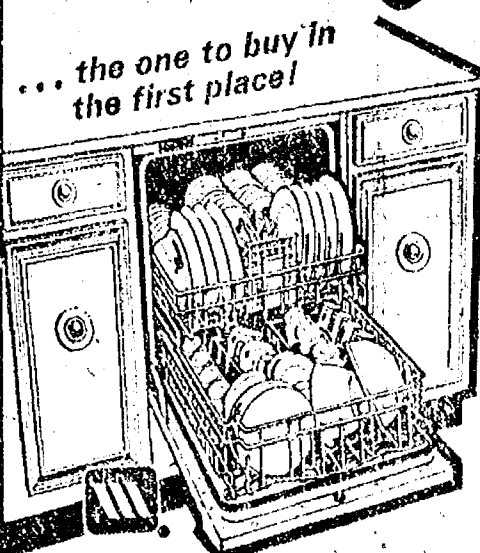
LIMITED TIME & QUANTITY
Sale Starts (Date) Ends (Date)

Maytag Scotsman Washer

• Permanent press and regular fabric cycles • 3 Water level settings • 3 Water temperature settings • Zinc coated steel cabinet with tough acrylic enamel finish • Family size porcelain enamel tub with Power Fin Agitator • Attractive brushed metal trim

NOW ONLY

\$279⁹⁵



MAYTAG Dishwasher

• Revolutionary new Power Module with Micro-Mesh™ filter • Full size upper and lower high velocity spray arms plus center spray.

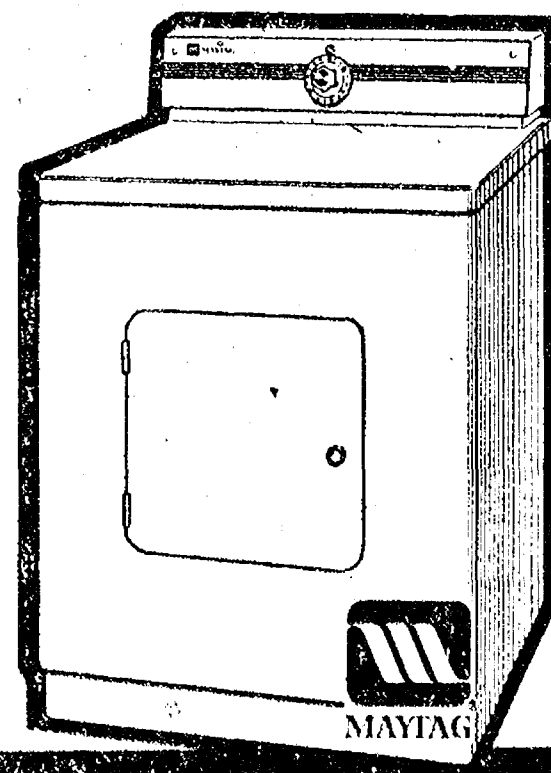
Limited
Time
Special

MAYTAG ALL FABRIC Dryer

• Permanent Press, regular and air fluff settings to make drying today's fabrics simple • Quality Maytag engineering means years of efficient, economic service • Famous Maytag Halo of Heat® dryers gently dry clothes in a smooth porcelain enamel drum • Zinc coated steel cabinet with extra tough acrylic enamel finish fights oil rust and provides lasting beauty

WHILE THEY LAST

Don't Miss Out



Delivery in time for Christmas. Special giant Maytag 3-dimensional Christmas gift card FREE with purchase of any Maytag.

HEYDLAUFF'S

113 N. Main St., Chelsea

Ph. 475-1221

TRAVEL WITH PEOPLE YOU KNOW

JOIN UNITED CHURCH TRAVELERS TO HAWAII

Four Island Tour - Departing March 6, 1976
\$768.90 Complete from Detroit

Price includes all air and land travel, in-flight meals, regular scheduled air lines, baggage transfers, sightseeing, deluxe hotels. (Optional meal plan available at additional cost)

CONTACT

REV. R. J. RATZLAFF, TOUR HOST

170 Orchard St., Chelsea, Mich. 48118 Phone 475-7307

Standard Ads Are A Good Shopping Guide.



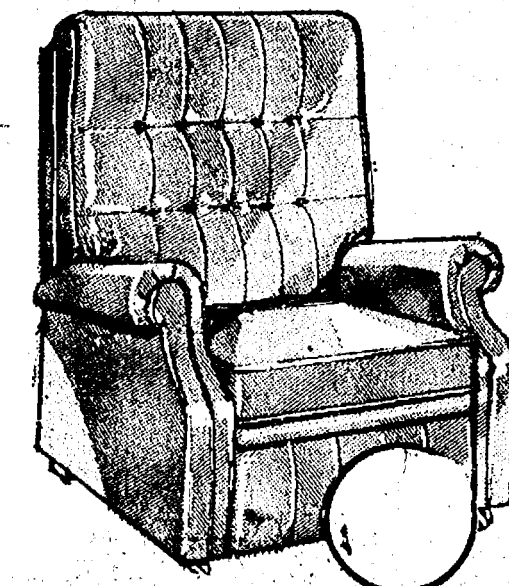
from

GAMBLES

110 N. MAIN

PHONE 475-7472

★ FOR DAD ★



Deluxe 3-Way
KING-SIZE
RECLINER

\$128⁸⁸

Regularly \$169.95

Use Our Easy Pay Plan
Manly leather-grain vinyl recliner boasts soft foam padding. Cushion reverses.



SWIVEL ROCKER

Regularly \$119.95

\$98

Gold print wing-back chair has reversible Stylofoam cushion, hardrock maple trim.

Lay-Away Now for CHRISTMAS

★ FOR MOM ★

Crockery Slow Cooker **\$12⁸⁸**
as low as

Presto Broiler Oven **\$48⁸⁸**
Reg. \$58.95. Special

Rival Crock Pot **\$24⁷⁵**
3 1/2-quart size

SELF BUTTERING HAMILTON BEACH
Corn Popper **\$14⁹⁵**

REG. \$26.95
Dominion Hair Dryer... **\$19⁸⁸**

Blower Hair Stylers **\$18⁸⁸**
As low as

Drip Coffee Makers **\$34⁸⁸**
From

Name Brand Household Appliances

At Low Christmas Sale Savings!

SHOP NOW and SAVE!

ADVERTISED SPECIALS:

(Try "The Friendly One" For Lasting Gifts)

Now Thru Saturday

Reg. \$4.29
★ Dimmer Switch **\$3.47**

Reg. \$7.75
★ Ceiling Light **\$4.96**

★ Basketball Equipment:

BACKBOARD, Reg. \$19.95 **\$16.49**

GOAL & NET, Reg. \$6.00 **\$ 4.78**

ROOF BRACKET, Reg. \$11.95 **\$ 9.95**

15' MOUNTING POLE,
Reg. \$44.95 **\$39.95**

Reg. \$4.99
★ 25' Extension CORD **\$3.99**

Reg. \$8.49
★ True-Temper Hammer **\$6.79**

★ Sportsman's Hatchet **\$9.37**

Reg. \$10.49
★ Weather Vanes **\$8.95**

Reg. \$1.79
★ 6" Wood Letters **\$1.23**

Reg. \$14.49
★ 6-lb. Splitting Maul.. **\$11.69**

★ Bulletin Boards **CORK 2-SIDES**
18x24 \$3.97, 24x36 \$6.97, 36x48 \$10.97

Fireplace Equipment 10% Off

CHELSEA LUMBER

**MeRry ChRiSmaS
EveRyOnE**
from
Village Books of Chelsea
105½ S. Main St.
Alan & Jaynar Johnston 475-9260

Cut Your Own CHRISTMAS TREES

at
Chelsea Rod & Gun Club
7103 Lingane Rd.

SUNDAY, DEC. 7 and 14
10 p.m. to 2 p.m.

\$3.00 for members and guests

Mike Fouty Listed in High School Super Stars

Chelsea High school senior Mike Fouty has been named to the 1975-76 volume of "High School Super Stars."

Fouty, who has been a varsity golfer at CHS for four years, was nominated for the honor by his golf coach, Pat Wade.

Wade said the recognition is based upon distinguished athletic performance, sportsmanship and participation.

Mike's accomplishments, among them, two All-Conference Championships for 1974 and 1975 and a handicap of one, will be included in the volume, together with a short biographical sketch of the youth.

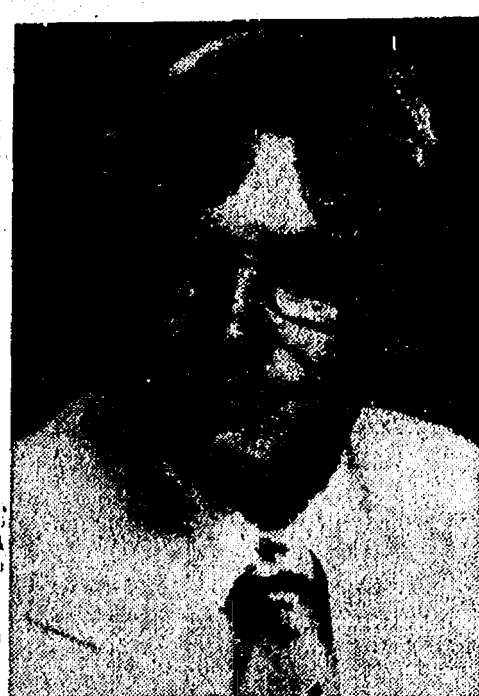
In a brief conversation with the young golfer, Mike said that he hopes to attend the University of Alabama on a golf scholarship next fall. However, he cautions that the college competition will be quite stiff.

Fouty's almost non-existent handicap is governed by play on local courses only. He is the first to admit that new and tougher courses may show that his golf needs a lot of improvement.

However, he is undaunted and states his intention to enter the pro circuits upon graduation from college.

Playing since the age of six, under the direction of both his parents, Mike attributes a good deal of his skill to the patience and devotion of Pat Wade. He's put a lot of effort into the team," Mike remarked. And he has really helped me become a good golfer."

Subscribe today to The Standard!



MIKE FOUTY

South Elementary School Preparing Holiday Program

On Wednesday, Dec. 17 at 2 p.m., South Elementary school first and second grades will present a Christmas music program in the cafeteria.

On Thursday, Dec. 18, grades three, four and five will present a musical program at 2 p.m.

Directing the programs will be South school elementary music teacher Susan Dye.

Mrs. Dye encourages all parents, relatives and friends to attend.

Following both programs refreshments will be served.

Brothers Open Auto Paint, Body Shop

A desire to be their "own bosses," coupled with the fact that they enjoy "this kind of work" was what brought Jerry and Jim Roberts together early last fall when they opened Robert's Paint and Body Shop.

Located at 20416 Old US-12, right next to Thompson's Pizza, the two brothers have officially been doing business since the first of September.

"We're keeping busy," remarked the older of the pair, Jim. And apparently much of their business comes by word of mouth.

Jim Roberts said that painting cars belonging to their younger customers really paid off. They passed along the word.

Painting and body work are not new to the brothers. They say they have always been interested in it. Even in past years when each held other jobs; Jim at Courtesy Ford Body Shop in Jackson and Jerry at Ipsco, they rebuilt totaled cars at home.

They realize of course that happiness is essential to a good partnership; and from what they said it appears as though the feeling is "so far, so good."

The shop is open 9-5 p.m. Monday through Friday and Saturdays until noon.

Scriptwriting Tape Goes to District Judges

Judging of the 29th Voice of Democracy Broadcast Scriptwriting Program was held Friday, Dec. 5. One of six tapes submitted from the Chelsea High school classes of William Coelius was selected to be sent to District II competition.

According to representatives for the VFW Post 4076 and their Auxiliary, who sponsored the event, the names of the winner and the runner-up will be released in about a week following the arrival of the tapes to District VI V.O.D. chairman, Jim Van Camp in Howell for judging at the district level.

Judging at the tapes Friday at the VFW Hall were Leona Beeman, principal of Katz Elementary school, Munith; Bernice Packard, 1st grade teacher, North Elementary school, Chelsea; Rebecca Mann, 6th grade teacher, Manchester Middle School, Manchester; and Frank White, past Post Commander VFW 4076, Stockbridge.

Co-chairmen for the contest, Lucy Platt and Fremont Boyer stated that this was the first year the local Post and Auxiliary have been able to sponsor the essay program. They added that they hope to make it an annual event at Chelsea High school and in the future see it expand to neighboring high schools.

Following judging at the district level, winning tapes will go on to state and then national competition for the final judging.

Danville, Ky.—Police Judge Jack May sentences high school students who violate traffic laws to write their own obituaries. One teen driver said he was glad he was required to do this because now he realized the seriousness of careless and reckless driving.

Second
Section

The Chelsea Standard Pages
9-14

CHELSEA, MICHIGAN, THURSDAY, DECEMBER 11, 1975



CAROL PALMER, daughter of Mr. and Mrs. George L. Palmer, reaches out for the stuffed reindeer Santa offers after telling him her Christmas wishes. Waiting in line, a number of anxious children who were invited to visit with Santa as part of the Kiwanis Club's annual children's Christmas party Monday evening. Looking on are Sandy Young and Lincoln Laubon.



NOT IMPRESSED: This curly headed tyke, Katrina Whitaker, on Santa's knee, doesn't seem to be the least bit impressed with the jolly man nor her stuffed reindeer. However, the baldheaded kid at the far right seems anxious to have his turn with Santa. Scores of area children were entertained Monday evening at the Chelsea Kiwanis Club's annual Kiddies Christmas party.

Sentenced in Deaths of Area Couple

Stanton—Bert H. Hunt, charged with manslaughter in the June 24 traffic deaths of a Grass Lake couple, was sentenced Tuesday, Dec. 2, to not more than 15 years and not less than five years and two months by Judge Leo B. Bebeau, of the 8th Judicial Circuit Court.

Hunt, 17, of Riverdale, has been jailed since June 27. He will be given credit for time already served.

Hunt threw a rock that caused Lloyd and Frances Walz, 28 and

26, to crash their motorcycle into a tree, according to witnesses heard in Hunt's preliminary examination. The accident occurred on M-46 east of Edmore between Lansing and Grand Rapids.

Mr. and Mrs. Lloyd Walz are survived by two small children.

Gift Ideas
FROM
DANCER'S

**All Ladies Sleepwear
10% OFF**

Wide Selection of
Infants & Children's Wear
for excellent gift items

Large Assortment of
LEISURE SUITS

If we shouldn't have exactly what you want, we can order it for you.

ALL LADIES

**WINTER COATS
10% OFF**

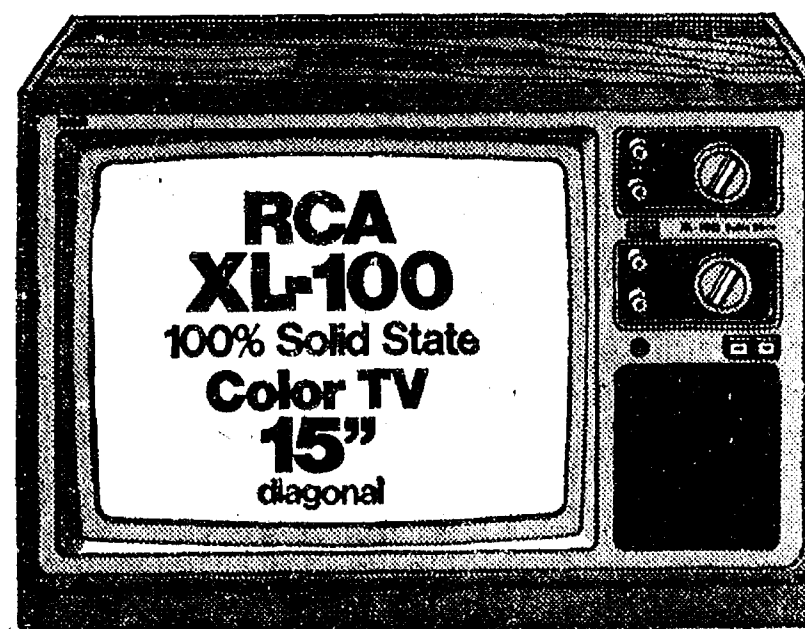
See Our New Selection of
MOOD RINGS

DANCER'S
Chelsea's Friendly Dept. Store

GO

GAMBLES

for RCA COLOR
THIS CHRISTMAS



RCA The PROJECTA 15 Model ET355 15" diagonal picture

**It's XL-100
100% Solid State
and more!**

\$349.00 Regularly \$419.00

• Combines XL-100, 100% Solid State reliability with the brilliance, contrast and definition of the AccuLine picture tube system custom-designed expressly for color portable TV.

Drive an RCA Home for Christmas!

OPEN

7 DAYS

A WEEK

Sun. thru

Thurs.

8 to 9

Fri. and Sat.

8 to 10

**BRANDWAGON
SALE!**

HOP ON THE BRANDWAGON AND SAVE...

**HOT
HOME-MADE BREAD**
3:30 p.m. Daily

1-LB., 8-OZ. SALUTO

DELUXE COMBO PIZZA Reg. \$1.99
\$2.49

11 ¼-OZ. SARA LEE

PECAN COFFEE CAKE Reg. \$1.09
\$1.49

10-OZ. GREEN GIANT

PEAS with Butter Sauce Reg. 3 for \$1
49c

1-LB. PKG.

KEYKO MARGARINE, ¼'s Reg. 45c
57c

15 ¼-OZ. CAN DEL MONTE NATURAL JUICE

PINEAPPLE, Sliced, Crushed or Chunk Reg. 3 for \$1
45c

1 ¼-LB. LOAF LUMBERJACK

OVEN-FRESH BREAD Reg. 53c
63c

20-OZ. JAR

WELCH'S GRAPE JELLY Reg. 69c
83c

6 ½-OZ. CAN

BREAST O' CHICKEN TUNA Reg. 46c
53c

16-OZ. NO-RETURN BOTTLES

7-UP, Reg. or Diet 8 pac \$1.19

1-LB. PKG. ECKRICH

SMORGAS-PAC LUNCH MEAT \$1.29

RICK'S MARKET

Just North of Chelsea on M-52

"The Friendly Store"

Phone 475-2898

Ads
Taken
11 p.m.
Tuesday

Advertise the Action Way! The Want Ad Way!

Just
Phone
475-1371

WANT ADS

The Chelsea Standard
WANT AD RATES
PAID IN ADVANCE. All regular ad-
vertisements 75 cents per line. 25 words
or less. Each line 25 words. Extra 25
cents per word for each additional line.
Special rates for classified ads. See
page 10 for details.
CLOSING TIME: 11 p.m. Tuesday.
CASH OR CREDIT. All ads must be
paid for in advance. No cash or credit
allowed.
CARTS OF THANKS or MEMORIALS
Single paragraph style, \$1.50 per
insertion for 50 words or less; 3 cents
per word beyond 50 words.
COPY DEADLINE—1 p.m. Tuesday
week of publication.

Cub Scout
Christmas Tree Sale
MEMBERS PARKING LOT
5 to 9 Monday thru Friday
9 to 5 Saturday
1 to 3 on Sundays
Sponsored by
Cub Packs 415, 435, 445, 455
All profits to Chelsea Cub Scouts

ALLSTATE
INSURANCE
AUTO - BOAT - COMMERCIAL
LIFE - HEALTH - HOME

N. H. MILES, Agent
Phone Even. or Week-ends for

PIANO TUNING Chelsea and Area.
Facilities for reconditioning and
rebuilding. Used piano sales. Re-
conditioned grand and upright
pianos. E. Ecklund, 475-4425.

CHELSEA
10 ACRES — 4-bedroom colonial,
dining room, family room, fire-
place, Chelsea schools.
\$30,500 — 2-bedroom, convenient to
medical and shopping, super
kitchen.
\$32,900 — 3-bedroom, country set-
ting, 1-plus acre.
\$46,900 — 4-bedroom, deep lot
backs up to woods, close to high
school.
26 ACRES, located between Chelsea
and Ann Arbor, 8-bedroom
farm home.
GRASS LAKE SCHOOLS: 4-bed-
room, dining area, family room,
1 acre, \$47,900, additional acreage
available up to 37 acres.
23 ACRES — 2-bedroom, frontage
on 2 roads.

FRISINGER
REALTORS
Chelsea 475-8681
Evenings:
Paul Frisinger 475-2621
Bob Koch 475-4754
Herman Koehn 475-2613
Toby Peterson 475-2718
Burke Fitzgerald 1-878-6603

TRUCK-DEMO — 1975 Chevrolet
half-ton Cheyenne with many ex-
tras. Save \$1,000. Lloyd Bridges
Chevrolet.

HOUSEHOLD ESTATE SALE —
Thursday, Dec. 11, 151 Park St.,
Chelsea, 10 a.m. to 5 p.m.; 7 to 9
p.m. Antiques, 1974 Magtag wringer,
washer, misc. items too nume-
rous to mention.

FOR SALE — Seasoned fireplace
wood, \$20. Ph. 475-1669.

WANT ADS

PATCHING AND PLASTERING
Call 475-7489.

**CLOGGED
SEWER**

**Reynolds Sewer
Service**

We Clean Sewers Without Digging
Drains Cleaned Electrically
FREE ESTIMATES
2-YEAR GUARANTEE
Phone Ann Arbor NO 2-5277
"Sewer Cleaning Is Our Business—
Not a Sideline"

WANT ADS

Custom Built Homes

O—hi We Remodel too

U—can count on us

N—Job Too Small

T—Hm Inside & Out

R—Bugh-In Only If

Y—Bu Want To Finish

S—Strong Aluminum, 5" Gutters

I—Immediate Attention

D—ALE COOK & CO.

E—Estimates, Free

BUILDERS

Please Call

475-8863

DALE COOK

BOB'S LOCK & KEY

Commercial, Residential,
Automotive
Luggage locks repaired.

475-9071

GEORGE W. SWEENEY

HEATING

Licensed Contractor
Furnaces, air conditioning,
and street metal work.

Phone 475-1867

CAR RENTAL by the day, week,
end, week or month. Full insur-
ance coverage, low rates. Call
Lyle Christwell at Palmer Motor
Sales, 475-1304.

J. R. CARRUTHERS

LICENSED
RESIDENTIAL BUILDER

CUSTOM HOMES

ADDITIONS/FIREPLACES

PATIO

ROOFING/SIDING/REPAIRS

475-7234

CHELSEA

MARRIED COUPLE without chil-
dren desire house to rent within
a 15-mile radius of Dexter. All
reasonable rents considered. Call
Chris between the hours of 10 a.m.
and 5 p.m. at 426-3111.

1975 BLAZER Cheyenne 4-wheel
drive, 9,500 miles, \$5,375. Howell
(517) 546-2733.

WANT ADS

HOUSE FOR SALE by owner—4
bedroom ranch, family room, 2
baths, full basement, 3 years old.
Ph. 475-1791.

ALBER FARMS

ORCHARD - CIDER MILL

Member Michigan Certified
Farm Markets

Northern Spy and Ida Red

Sweet Cider, Whiskey Barrels

New Kegs - Potatoes - Misc. Items

Open All Winter Daily

except Thanksgiving, Christmas
and New Year's Day.

18011 Belmont Church Road

Manchester - 428-7758

Special of the Week

1974 BUICK CENTURY

2-dr. hardtop (air cond.)

27,000 miles

\$3395

USED CARS

1975 OLDS Vista Cruiser wagon, 3-

seat, air cond. \$3095

1974 FORD Ranchero pick-up, 2-

dr. 24,000 miles \$2495

1974 CHEVROLET Vega Kambach

wagon, 4-speed \$2495

1973 BUICK Electra 225 4-dr. hard-

top, air cond., 39,000 miles \$3795

1973 BUICK Regal 2-dr. hardtop,

air cond. \$2995

1973 OLDS Delta 88 Royale 4-dr.

sedan \$4295

1973 OLDS Cutlass 2-dr., air cond.,

26,000 miles \$2495

1973 FORD Pinto runabout, auto-

matic, 28,000 miles \$1995

1972 OLDS Cutlass 3 2-dr. hardtop,

air cond. \$2495

1972 OLDS Cutlass 5 2-dr. sedan,

air cond. \$2795

1972 PONTIAC Catalina 4-dr. se-

dan, air cond. \$3795

1971 PONTIAC Catalina 2-dr. hard-

top, air cond. \$1695

1971 OLDS Custom Cruiser wagon,

3-seat, air cond. \$1795

1971 BUICK LeSabre Custom 4-dr.

hardtop, air cond. \$1595

1971 FORD LTD 2-dr. hardtop, air

cond. \$1495

1971 OLDS Delta 88 4-dr. hardtop,

air cond. \$895

1970 BUICK Electra 225 4-dr. hard-

top, air cond. \$1395

1970 LINCOLN 4-dr. sedan, air

cond. \$1295

1970 FORD Galaxie 500 Country

Sedan station wagon, air cond.,

\$695

1966 BUICK LeSabre 4-dr. sedan

\$1195

FINE SELECTION OF

USED SNOW TIRES AVAILABLE

Mon. - Tues. - Wed. - Fri. 8:00-5:30

Thurs. 8:00-9:00

Sat. 8:00-1:00

SPRAGUE

Buick-Olds-Opel, Inc.

Sat. 8:00-1:00

1500 S. Main St., Chelsea 26

CHELSEA

SCHOOLHOUSE APARTMENTS

Applications being taken for

Building No. 2 to be open by Jan.

15. Phone R.E.T.S. Enterprises at

761-3025 or 475-1509 for further in-

formation.

WANT ADS

WANTED — C-3 or C-4 Argus cam-
era. Ph. 475-8757. x26

THORNTON

IN TOWN — Mediterranean styling

enhances the exterior of this

newer home. Faces private court-

yard, back yard fenced. Loads of

living space and family room with

fireplace. 4 bedrooms plus extra

bedroom in basement, 1st floor

laundry, attached garage. \$51,000.

ROOMY — Country colonial at

North Lake Farms is ready for

immediate occupancy. In spotless

condition. 4 bedrooms, 2 1/2 baths.

Enjoy large family room with fire-

place. Lake privileges, near golf.

\$87,900.

TAX CREDIT — Last month to re-

ceive \$2,000 tax credit on the pur-

chase of this new tri-level, 3 bed-

rooms, 2 1/2 baths. On 1 acre in

Chelsea schools, 8 1/4 percent financ-

ing available. \$56,900.

IMMACULATE — Newer home

well landscaped, on 1 1/2 acres, 3

bedrooms plus huge library, 1 1/2

baths, deck off master bedroom

with lovely view. 1st floor laundry.

In Pinckney schools. \$63,900.

BUY NOW — \$2,000 tax credit ex-

pires this month. This contem-

porary chalet has plenty of room for

a large family, 3 bedrooms, 2 1/2

baths, 2 fireplaces. Huge family

room area plus room for extra

bath and bedroom. At Half Moon

Lake. \$58,500.

VACANTLAND

\$6,000—Excellent building sites, 2 1/2

acres, in Waterloo township.

1 ACRE — Parcels available at

North Lake Farm.

ROBERT H.

THORNTON

JR., P.C.

REALTOR

CHELSEA 475-8628

Pog Hamilton 475-1870

Dolly Alber 475-2801

Helen Lancaster 475-1198

Mark McKernan 475-8424

VACUUM CLEANERS

Authorized Electrolux

sales and service.

James Cox

428-8444, or 428-8686

118 Riverside Dr., Manchester 48tf

KNAPP SHOES

For Cushion Comfort

Robert Robbins

475-7282

LICENSED BEAUTY OPERATOR

needed immediately for regular

part-time work with nursing home

patients. Chelsea United Methodist

Home, 805 W. Middle, Chelsea.

Call 475-8633. x26

BRAND NEW

HOUSE FOR SALE

IN THE COUNTRY

FEATURING

★ 3 large bedrooms

★ 1 1/2 baths

★ Full basement

★ Large 2-car garage

★ Formal dining room

★ Studio ceilings

★ Two sliding glass doors opening to a pine grove

★ Maintenance-free cedar and aluminum exterior

★ Insulated wood windows

★ 3 1/2" and 6" insulation for low heat bills

★ Chelsea schools

This house is so new you still have time to select your

own carpet colors. Drive by: Take North Territorial

Rd. to Hankerd, turn north, go two miles on Hankerd

to Noah Rd., go left on Noah Rd. 500 ft. (Noah

Heights is on your left.)

NOAH HEIGHTS is a very exclusive small country

subdivision of acre lots, with friendly neighbors, not

too close, but not too far. Lots are completely sur-

veyed, covered with pine and oak trees, and located

adjacent to state land for year around outdoor en-

joyment.

A BEAUTIFUL PLACE TO LIVE

\$45,900 (Complete)

475-2828

Appointments

Anytime

WANT ADS

Fireplace Builder
Field Home Mason, brick and block
masonry, back painting.
FREE ESTIMATES
Call 475-8025 after 5 p.m.

Patrick Grammatico

x40tf

Pickup Caps & Covers

For all makes and models. Stan-

dard and custom-designed. From

\$147.00. Free brochure.

PIONEER COACH

MANUFACTURING CO.

3486 Pontiac Trail

Ann Arbor, 668-6785

Used Equipment

PM 55 McCulloch chain saw, 16"

bar, like new, \$175.

WANT ADS

FOR RENT—Apartment, 1-bed-room, all utilities, stove, refrigerator. Available immediately. No pets or children. 426-8119 or 426-8343. x24tf

BUILDING SITE—10 acres between Chelsea and Dexter about one mile from I-94, with man-made lake suitable for trout. \$18,000 or best offer. Call 426-8119 or 426-8343. x24tf

- YOUNG -

We list and sell lake, country and town properties. Eugene Young, Real Estate & Builder, 878-3792, 1156 Dexter-Pinckney Rd., Pinckney 48169. x34tf

BUILDERS—House and barn roofing, all types of roof repair, aluminum storm windows and doors, aluminum siding and gutters, awnings, porch enclosures, garage and room additions, cement work. Call Joe Hayes for free estimates, Manchester 428-8529. x16tf

CAR & TRUCK LEASING—For details see Lyle Chriswell at Palmer Motor Sales, 475-1301. 49tf

CARPENTER WORK—Inside or out. Mr. Coburn, 475-2893. 12tf

COMPLETE ALUMINUM SERVICE

Siding - Awnings - Repairs
Gutters - Storm Windows
Remodeling
Free Estimates
Call 475-9209

Camelot Construction
Chelsea, Mich. x12tf

CUSTOM BUILDING

LICENSED & INSURED
FREE ESTIMATES
TOTAL CONSTRUCTION SERVICES

Residential, commercial and industrial.
Garages
Remodeling - Additions
Aluminum Siding
Roofing
Trenching

SLOCUM CONTRACTORS & BUILDERS

Serving Washtenaw County
For Over 20 years
20700 OLD US-12
CHELSEA
Phone 475-8321 or 475-7611 21tf

CUT FOOD COSTS

Grow your own fruit on Stark Bros. trees.
Reserve stock now for spring mail delivery.

Eison Bettner
15700 Cassidy Rd.
475-9223 15tf

USED CARS

AT OUR TRIANGLE LOT
M-52 and Old Manchester Road

'75 LTD SQUIRE Wagon \$4995
Factory air

'75 LTD 4-DR. \$4795
Air. Like new

'74 GRAN TORINO 2-dr. \$2995
Factory air

'74 GRAN TORINO 4-dr. \$2995
Automatic trans.

'74 PINTO WAGON \$2695
Good, economy

'73 PINTO 3-DR. \$2295
Like new

'73 MONTEGO 2-DR. \$2395
Real clean

'73 HONDA 350 BIKE

'73 KAWASKI 400 BIKE

TRUCKS

WE NEED USED TRUCKS

'74 ECONOLINE VAN \$3295
One owner

'67 FORD 1/2 TON
V-8, standard

THE HAPPYFACE PLACE

See Lyle Chriswell
See Bonnie Hayce
See Bob Bortell

We're in business to make you smile

PALMER
Since April 1912

Open Mon. - Thurs. Fri. 10 a.m. - 5 p.m.

WANT ADS

FOR SALE—Indian cents, post-cards, books, foreign coins, Australian opals, and other articles. Will treat you fine. Lawrence E. Guinan, Sylvan Hotel, 114 N. Main St., Chelsea. 25tf

WEDDING STATIONERY—Prospective brides are invited to see our complete line of invitations and accessories. The Chelsea Standard. Ph. 475-1371. 8tf

GUTTERS

SEAMLESS aluminum eaves-troughs installed. White and brown. Call Wilson Metal Shop, Manchester, 428-8468. x8tf

McCulloch

Portable Generators
Chain Saws
WE SELL, SERVICE,
SHARPEN AND TRADE

Chelsea Hardware

FOR REAL DOLLAR SAVINGS be sure and see us before you buy any new or used car. Palmer Motor Sales, Inc. Your Ford Dealer for over 60 years. 21tf

Complete

Body Repair
Service

Bumping - Painting
Windshield and Side Glass Replacement
Free Pick-up & Delivery
Open Monday Until 9
CONTACT DON KNOLL
FOR FREE ESTIMATE

Village

Motor Sales, Inc.
IMPERIAL - CHRYSLER
DODGE - PLYMOUTH
Phone 475-8661
1185 Manchester Rd., Chelsea
Hours: 8 a.m. to 6 p.m.
Tues. thru Fri. Until 9 Monday
9 a.m. to 1 p.m. Saturday 14tf

NEED A ROOF? Call Tom Building & Remodeling, (313) 498-2178. 41tf

A fine selection of
New and Used Cars
for immediate delivery

Harper Pontiac
Sales & Service

475-1306
Evenings, 475-1608 40tf

FOR SALE—1967 Ford Fairlane, 289, automatic. Call 475-8224. 26

LARGE APT. FOR RENT—Partially furnished. 2 people. Security deposit. Utilities furnished. 2 miles north of Chelsea. No pets. 475-7486. x28

BY OWNER—Saline schools, 2-story, aluminum siding, screened porch, 3 bedrooms, built-in electric kitchen, full basement and paneled game room. \$35,500. Ph. 429-5250. x28

'75 LTD SQUIRE Wagon \$4995
Factory air

'75 LTD 4-DR. \$4795
Air. Like new

'74 GRAN TORINO 2-dr. \$2995
Factory air

'74 GRAN TORINO 4-dr. \$2995
Automatic trans.

'74 PINTO WAGON \$2695
Good, economy

'73 PINTO 3-DR. \$2295
Like new

'73 MONTEGO 2-DR. \$2395
Real clean

'73 HONDA 350 BIKE

'73 KAWASKI 400 BIKE

'73 LTD SQUIRE Wagon \$4995
Factory air

'73 LTD 4-DR. \$4795
Air. Like new

'74 GRAN TORINO 2-dr. \$2995
Factory air

'74 GRAN TORINO 4-dr. \$2995
Automatic trans.

WANT ADS

WOULD YOU LIKE to learn another craft? Decoupage, paper collage or needlepoint. If you have two hours free and three friends phone 475-7129. x28

FOR SALE—4-year-old registered Beagle, excellent hunting dog. \$75. Phone 475-1041. x26

FOR RENT—4,300 ft. office and warehouse with loading dock. Paved off-street parking. In Dexter. Call 428-4002 after 6 p.m., or week-ends. x12tf

Once-A-Year Sale!

New Cars & Trucks,
Demos,
at
Tremendous Savings!

DEMOS

First come, first served!

Stock No. 894—'75 Dodge Coronet Custom 4-dr. sedan, 360, auto., p.s., p.b., air cond., AM-FM, radials, 2-tone, etc. Was \$5837.30. NOW \$4735. x26

Stock No. 926—'75 Dodge D-100, Club Cab, 133-in. wheelbase, 313, auto., p.s., p.b., AM-FM, speed control, radials, 2-tone, etc. Was \$5743.10. NOW \$4610. x26

Stock No. 973—'75 Chrysler Newport 4-dr. sedan, 400 2-bbl., auto., p.s., p.b., air cond., AM-FM, speed control, radials, etc. Was \$6022.60. NOW \$4685. x26

Used Trucks

'75 CHEVY 3/4-ton pickup, 350, auto., p.s., p.b., AM-FM, low mileage. \$3995. x26

'73 CHEV 1/2-ton pickup, 307 V-8, auto., step bumper. \$1995. x26

NEW '75s

Stock No. 795—'75 Duster Custom Coupe, 225, auto., p.s., AM radio, Space Duster pkg., etc. Was \$4251.95. NOW \$3745. x26

Stock No. 819—'75 Duster Custom Coupe, 225, auto., p.s., AM radio, white sidewalls, etc. Was \$3965.70. NOW \$3485. x26

Stock No. 974—'75 Chrysler Newport 4-dr. sedan, 400 2-bbl., auto., p.s., p.b., air cond., AM-FM, speed control, radials, etc. Was \$5993.45. NOW \$4845. x26

Also an excellent selection of new '75 Vans, Sportsman Wagons, Power Wagons, and Sno-Peters at tremendous savings. Highest trade-ins. Bank financing arranged.

Quality Used Cars

'75 MAVERICK 2-dr. 6-cyl., auto., p.s., air cond., AM-FM, radials, 11,000 miles. \$1995. x26

'75 PLYMOUTH Gran Fury Custom 4-dr. hardtop, 318, auto., p.s., p.b., air cond., speed control, AM-FM, rear defogger. \$3995. x26

'74 PLYMOUTH Fury 4-dr., V-8, auto., p.s., p.b., air cond. \$1595. x26

'75 PLYMOUTH Satellite Custom 4-dr. sedan, V-8, auto., p.s., p.b., air cond., AM-FM, power windows, rear defogger, 1400 miles. \$2795. x26

'75 CHARGER SE, 318, auto., p.s., p.b., air cond., AM-FM, radials. \$2895. x26

'75 COUGAR 2-dr. hardtop, 351, auto., p.s., p.b., air cond., AM-FM stereo. \$1995. x26

'72 VW Bus, good condition. \$1995. x26

'72 MERCURY Monterey station wagon, V-8, auto., p.s., p.b. \$995. x26

'69 PLYMOUTH Sport Suburban wagon, V-8, auto., p.s., p.b., low mileage. \$795. x26

'69 FORD Club Wagon, V-8, speed, 5-pass. \$895. x26

'69 PLYMOUTH Fury III 4-dr., V-8, auto., p.s., rallye wheels. \$695. x26

'68 DODGE Coronet 2-dr. hardtop, 318, 3-speed. \$135. x26

'68 PLYMOUTH station wagon, V-8, auto., p.s. \$395. x26

'67 FORD station wagon, V-8, 3-speed. \$395. x26

'62 PLYMOUTH station wagon, V-8, auto. \$295. x26

Automotive
Rust Proofing
Cars and Trucks

Village
Motor Sales, Inc.
IMPERIAL - CHRYSLER
DODGE - PLYMOUTH
Phone 475-8661
1185 Manchester Rd., Chelsea
Hours: 8 a.m. to 6 p.m.
Tues. thru Fri. Until 9 Monday
9 a.m. to 1 p.m. Saturday 26tf

NEW LISTING

HORSE FARM, 35 acres. Large 8-room house, 5 bedrooms, 2 large barns, 3-car garage. On black-top road. Dexter schools.

TO SEE CALL
Burke Fitzgerald
Office 475-8681 - Res. 878-6803
Representing

FRISINGER REALTORS

SKIS, poles, boots size 7 1/2 and bindings, good for beginners, \$10; Ward's 5-speed men's touring bike, \$40. Ph. 475-1846. 26

REMEMBER the tasty bread at the fair, Magic Mill and Mixer on sale for the month of December. Savings of \$100. Free cookbook of \$10 value included. Ph. Mary Pierson at 475-8750. 28

WANT ADS

SEAMLESS ALUMINUM eaves-troughs, roofing, siding, and carpentry work of all kinds. Experienced installers. All work guaranteed. For free estimate, call R. D. Kleinschmidt Co., 428-8856. x31tf

KETO USED CARS

8020 GRAND - DEXTER
426-4535

CARS BOUGHT AND SOLD

MUNITH AUCTION—100 Main St., Munith, Mich. Auction every Sunday 8 p.m. Danny Fleming, auctioneer. x12tf

STOCKBRIDGE, 13 acres, commercial, on M-52. (517) 851-8144. 55tf

D&G Allen Excavating
Septic Tanks and Drainfields
Back Hoe and Dozing
Sand, Gravel and Topsoil Hauled
Phone (517) 851-8386
or (517) 851-8278 43tf

BRICK MASON—Brick work, block work, fireplaces, chimney repairs, homes and additions. Ph. 475-2584. x44tf

PAINTING—Exterior and interior. Quality workmanship, free estimates, references, reasonable rates. Ph. (517) 851-7055. x48tf

SEE US for transit mixed concrete. Klump Bros. Gravel Co., Phone Chelsea 475-2530, 4920 Loveland Rd., Grass Lake, Mich. x40tf

TRAVEL TRAILERS—13 ft. and up; 10x55 ft. trailers. John R. Jones Trailer Sales, Gregory, Mich. Phone 498-2655. 43tf

ELECTRICAL WIRING of all types New and rewiring. Ph. 426-4655. x20tf

WILL DO BABYSITTING in my home. Any age. Please call 475-8331. 16tf

IN THE AIR FORCE, good people are promoted, not laid-off. Jobs available in police, electronics, mechanics and clerical. Men, women, ages 17-28, no experience necessary. Call your Air Force Representative, at 971-1830. 29

Old Orchard

Furniture Refinishing
ANTIQUES RESTORED
Old finish removed from wood or metal safely and economically.

513 Old Orchard
Stockbridge, Michigan 49285
(517) 851-8713 10tf

Seasoned Firewood
\$25.00 per cord
Delivered
Bill Young - 475-7181 18tf

FOR RENT—Year-round cottage at Cavanaugh Lake. Married couple only. No children. No pets. Ph. 475-8469 or 475-2018. 18tf

CERAMIC TILE—Reasonable prices. Excellent work. Ph. 426-2280. x24tf

GAR - NETT'S
Flower & Gift Shop
Your Friendly Florist
112 E. Middle St., Chelsea

PHONE 475-1400

Funeral Flowers
Wedding Flowers
Cut Flowers (arranged or boxed)
Potted Flowering Plants
Green Plants - Corsages
WE DELIVER x9tf

Automotive
Rust Proofing
Cars and Trucks

Village
Motor Sales, Inc.
IMPERIAL - CHRYSLER
DODGE - PLYMOUTH
Phone 475-8661
1185 Manchester Rd., Chelsea
Hours: 8 a.m. to 6 p.m.
Tues. thru Fri. Until 9 Monday
9 a.m. to 1 p.m. Saturday 21tf

CHRISTMAS TREES—Scotch, white pine and blue spruce. Charles Smith, 8693 Lingane Rd., just south of the Chelsea Rod & Gun Club. Ph. 475-7530. 27

CHRISTMAS GIFTS—2 Polaroid Swinger cameras, \$10 ea.; Polaroid SX-70 camera, \$75; movie camera, \$50; 10-speed bike frame and parts; red, white and blue twin bed; \$10; aquarium with light, fish and stones; chicken coop full of barbed wire, \$50. Ph. 475-8091 or 475-1150. x26

1968 CHEVROLET CAPRICE, damaged from deer accident. \$250. 10180 N. Territorial Rd. Ph. 426-3362. x21

PIERSON & SONS
LICENSED GENERAL CONTRACTORS
475-8750
New Construction, Remodeling, Siding.

CALL OR STOP IN
CHELSEA GLASS WORKS
WORKMANSHIP AND MATERIALS FULLY GUARANTEED.
Open Daily 8 a.m. to 5 p.m.; Sat., 8 a.m. to 1 p.m.
140 W. Middle, Chelsea Phone (313) 475-8667

WE REPAIR AND REPLACE:

★ STORE FRONTS
★ FURNITURE TOPS
★ SHOWER DOORS
★ THERMOPANES
★ AUTO GLASS - Including Windshields
Free Pick-up and delivery on auto work.

Storm Door & Window Reglazing & Screens
COMMERCIAL BUILDINGS OR RESIDENTIAL
PROMPT SERVICE
REASONABLE PRICES

FOR SALE—Tenor sax, Buscher Aristocrat, like new. Best offer. Ph. 475-8661. 13tf

BLACK SWAMP DIRT by the ton or yard, and backhoe work. Drain fields, basements dug. Drive-ways. Ph. 475-1963. x24tf

FOR RENT—American Legion Hall. \$50. Call 475-1824. 40tf

CLOCKS REPAIRED—Any old antique time clocks, coo - coo clocks and grandfather clocks. Call Fred Petsch, 475-8494. 29

1974 FORD PICK-UP—1/2-ton, power steering, automatic transmission, front disc brakes, good condition, \$2600. Ph. 475-9223. x24tf

PROPERTY FOR SALE—Cory 2-bedroom starter home or retirement home, 589 Pleasant Dr. Lake access, 1,900' dock, nice neighborhood, \$19,000. Ph. 426-8830 days; 878-9778 evenings. 26

FOR SALE—Singer sewing machine, \$25. Black Lab, 8 years old, best offer. 475-1282. 26

WANT ADS

FOR SALE—Tenor sax, Buscher Aristocrat, like new. Best offer. Ph. 475-8661. 13tf

BLACK SWAMP DIRT by the ton or yard, and backhoe work. Drain fields, basements dug. Drive-ways. Ph. 475-1963. x24tf

FOR RENT—American Legion Hall. \$50. Call 475-1824. 40tf

CLOCKS REPAIRED—Any old antique time clocks, coo - coo clocks and grandfather clocks. Call Fred Petsch, 475-8494. 29

1974 FORD PICK-UP—1/2-ton, power steering, automatic transmission, front disc brakes, good condition, \$2600. Ph. 475-9223. x24tf

PROPERTY FOR SALE—Cory 2-bedroom starter home or retirement home, 589 Pleasant Dr. Lake access, 1,900' dock, nice neighborhood, \$19,000. Ph. 426-8830 days; 878-9778 evenings. 26

FOR SALE—Singer sewing machine, \$25. Black Lab, 8 years old, best offer. 475-1282. 26

APARTMENTS FOR RENT—Phone 426-3933. x33

VIEWERS WANTED for Word of Life, Sundays, 10 p.m., Channel 26

\$50 REWARD for information leading to rental of large country farmhouse with barn and other buildings. Leave message and number for Paul Thomas at 994-4309. x28

TRAILER SPACE for rent in Chelsea, for small or medium trailers. Ph. 1-474-8552. x26

DOROTHY—You, E. M., and I! We will prevail! We have survived the worst; now, the best awaits all four of us. If you pursue otherwise, you shall regretfully realize that you will never find another who has adored and will adore you more. h. 1-x11-75. -26

WINTER SPORTSMEN
See us for
TOBOGGANS, SLEDS, SAUCERS
ICE FISHING TACKLE
SNOW SHOVELS AND PUSHERS
SAFETY-SALT
BIRD FEED, FEEDERS
SWEET BLOCKS
SUNFLOWER SEED.

Chelsea Hardware

FOR SALE—Used Norge refrigerator, General Electric stove and Hamilton gas dryer, best offer. 475-7402. x26

FOR SALE—'67 Olds, 4-dr., new tires and paint, \$375. Ph. 475-7843. x26

HELP WANTED—Dishwasher. Apply at the Captains Table, Dexter. x28tf

SANTA—We have 9 little teddy bears waiting for Christmas delivery. Age 6 weeks. Mother mixed sheep dog. \$35. Phone 449-2901. x26

REAL ESTATE
CHELSEA

3-BEDROOM frame, attached 24x30 garage on one acre. Full recreation, walk-out basement. Four years old. On Waterloo Rd. MANCHESTER

7-ROOM, 3-bedroom ranch with 24x32 attached garage, on one acre. Sharp. Terms possible.

3-BEDROOM, full basement with small barn, on 10 acres with creek. June 1st 76 possession.

5-ROOM FRAME with large garage, big back yard, for spring delivery.

OOD LOT on East Main.

3 ACRES of land, on pavement.

Fahey Realty
15554 Fahey Rd., Manchester
428-8748
112 S. Washington
426-8348 27

FOR SALE—4-pc. Slingerland drum set red sparkle, with 2 zildjian cymbals. Excellent Christmas present. \$200. Call 475-1811. 26

ATTENTION—Save \$1,000 or more on all 1975 Impalas and Caprice demos. Lloyd Bridges Chevrolet. 26

THEY'RE HERE—Pet Rocks at Chelsea Card and Gift. See and enter our Christmas giveaway. World's largest Christmas stocking. Drawing, Dec. 20. 27

HELP WANTED—Male or female to manage afternoon shift at the Pump & Pantry, Monday through Friday. Must be out of school. For details, Ph. 475-2742 or see Don Alber. 27

FREE KITTENS to good homes. Ph. 428-8606. 28

HEATED GARAGE SALE—Dec. 12-13, 9 to 5 Christmas gifts, antiques, furniture, much more. 13700 E. Mich., Grass Lake. -26

FOR SALE—1974 Ski-Doo 340 F-A; 1973 Ski-Doo Elan, 250 Twin. Both in excellent condition. Call 475-7888. x26

WANT ADS

TEEN-AGE GIRL will babysit New Year's Eve in Chelsea area. Ph. after 4 p.m., 475-2954. 27

</

Legals

MORTGAGE SALE

Default having been made in the terms and conditions of a certain mortgage made by Charlotte Galloway, of Ypsilanti, Michigan, to Capital Mortgage Corporation, a Michigan Corporation, Mortgagee, dated the 3rd day of May, 1972, and recorded in the office of the Registrar of Deeds, for the County of Washtenaw, State of Michigan, on the 17th day of May, 1972, in Liber 1384 of Washtenaw County Records, on page 199-201, which said mortgage was thereafter assigned to Federal National Mortgage Association, by assignment dated May 3, 1972, and recorded on May 17, 1972, in 1-1984, P. 24, W.C.H. and thereafter assigned to The Lender Mortgage Co. by assignment dated Aug. 31, 1972, and recorded on March 23, 1973, in Register of Deeds for said County of Washtenaw in L. 1432, P. 971, and there after assigned to Metropolitan Savings Bank by assignment dated January 25, 1973, and recorded on March 23, 1973, in the office of the Registrar of Deeds for said County of Washtenaw in Liber 1432 of Washtenaw County Records, on page 974, on which mortgage there is claimed to be due, at the date of this notice, the principal and interest the sum of Nineteen Thousand Eight Hundred and Sixty Two Dollars (\$19,862.52);

And no suit or proceedings at law or in equity, having been instituted by or for the deft secured by said mortgage or any part thereof, Now, Therefore, by virtue of the power of sale contained in said mortgage, and pursuant to the statute of the State of Michigan in such case made and provided, notice is hereby given that on Thursday, the 8th day of January, 1976, at 10:00 o'clock a.m., Local Time, said mortgage will be foreclosed by public auction, to the highest bidder, at the southerly or Huron Street entrance to the County Building in Ann Arbor, Michigan (that being the building where the Circuit Court for the County of Washtenaw is held), of so much thereof as may be necessary to pay the amount due, as aforesaid, on said mortgage, with the interest thereon at seven per cent (7%) per annum and all legal costs, charges and expenses, including the attorney fees allowed by law, and also any sum or sums which may be paid by the undersigned necessary to protect its interest in the premises, which said premises are described as follows: "and certain piece or parcel of land situated in the City of Ypsilanti, in the County of Washtenaw, and State of Michigan, and described as follows: 'Lot 70, Grove Park Homes Subdivision, as recorded in Liber 13, Page 72 and 73 of Plate, Washtenaw County Records. Commonly known as: 3175 Grove Road, Ypsilanti, Michigan.'"

During the six months immediately following the sale, the property may be redeemed.

Dated at Detroit, Michigan, November 10, 1975.

METROPOLITAN SAVINGS BANK

Assignee of Mortgagee.

KEYS AND DEEDS TO BE FORWARDED TO

Attorney for Assignee of Mortgagee.

Nov. 13-20-27-Dec. 4-11

STATE OF MICHIGAN

The Probate Court for the County of Washtenaw.

File No. 57011

Estate of FRANK N. BURNS, Jr.,

TAKE NOTICE: On December 15, 1975,

at 9:00 a.m., in the Probate Courtroom,

Washtenaw County Building, Ann Arbor,

Michigan, before the Hon. Rodney E. Hutchinson, Judge of Probate, a hearing

will be held on the petition of Ann Arbor Trust Company,

for the allowance of its Fifth Annual Account.

Dated: November 21, 1975.

By Catherine M. Collins, Petitioner's

Assistant Trust Officer

P. O. Box 1

Ann Arbor, MI 48107

Attorney for Petitioner:

Honger, Hathaway, Fitcher, Price & Davis

By Joseph C. Hooper

Tenth Floor, First National Building

Ann Arbor, Michigan 48106

Phone 1-313-562-4426

Dec. 4

STATE OF MICHIGAN

The Probate Court for the County of Washtenaw.

File No. 64087

Estate of VIRGINIA E. STOUT, Deceased.

TAKE NOTICE: On January 6, 1975,

at 10:00 a.m., in the Probate Courtroom,

Ann Arbor, Michigan, before the Hon. Rodney E. Hutchinson, Judge of Probate, a hearing

will be held on the petition of Gayle Cordell, Petitioner,

for the assignment of her final account and for assignment of residue.

Dated: 1 December, 1975.

Gayle Cordell, Petitioner

6805 Westwood

Ann Arbor, MI 48107

Attorney for Petitioner:

Reichner & Philbrick

121 S. Main Street

Chelsea, Mich. 48118

Phone (313) 475-8671

Dec. 11

STATE OF MICHIGAN

The Probate Court for the County of Washtenaw.

Estate of LELAND BARNETT, Deceased.

TAKE NOTICE: On December 18, 1975,

at 11:00 a.m., in the Probate Courtroom,

Ann Arbor, Michigan, before the Hon. Rodney E. Hutchinson, Judge of Probate,

a hearing will be held on the petition of Lola Barbara King, executor, praying for

license to sell real estate for distribution

pursuant to Last Will and Testament of

deceased.

Dated: December 2, 1975.

Lola Barbara King, Petitioner

101 S. Main Street

Chelsea, Michigan

Attorney for Petitioner:

110 E. Middle Street

Chelsea, Mich. 48118

Phone 475-8866

Dec. 11

TESTATE

After granting of Administration

STATE OF MICHIGAN

The Probate Court for the County of Washtenaw.

File No. 64498

Estate of GARRETT L. PRIBLE, Deceased.

TAKE NOTICE: On November 20, 1975,

in the Probate Courtroom, Washtenaw

County Building, Ann Arbor, Michigan, before the Hon. Rodney E. Hutchinson, Judge

of Probate, a hearing was held on the

petition of James C. Hendley, the will of

the deceased dated July 31, 1973 was admitted to probate and administration was

granted to James C. Hendley whose address is P. O. Box 246, Union Savings Bank Bldg.,

Manchester, Mich. 48155

Take further notice that on February 19,

1976 at 11:00 a.m. in said courtroom, a

hearing will be held to determine the

heirs of the deceased.

Creditor of the deceased are notified

that all claims against the estate must be

presented to said James C. Hendley at the

foregoing address and a copy thereof,

together with proof of service, filed with

the Court on or before February 19, 1976.

Notice is further given that the estate

will be assigned to the persons entitled

thereof.

Dated: December 2, 1975.

James C. Hendley, Petitioner

P. O. Box 246

Union Savings Bank Bldg.

Manchester, Michigan

Attorney for Petitioner:

James C. Hendley

P. O. Box 246

Union Savings Bank Bldg.

Manchester, Mich. 48155

Phone (313) 426-9353

Dec. 11

ON FORFEITURE OF LAND CONTRACT

Public notice is hereby given that pursuant

to a summary judgment entered by the

Circuit Court for the County of Washtenaw,

State of Michigan on November 4, 1975

in favor of Paul David Pierma, Plaintiff,

and against Paul Allen DePree, Defendant,

I shall offer for sale to the highest bidder

at a public auction to be held immediately

inside the West Main & Huron Street

entrance of the County Building, Ann

Arbor, Michigan, that being the

building in which the Washtenaw Circuit

Court is located) on January 22, 1976 at

10:30 o'clock, local time, in the forenoon,

the interest of Defendant, Paul Allen DePree,

in a land contract dated December

10, 1975.

By Edward D. Deake

Edward D. Deake, Circuit Judge.

David McLaughlin

Redeemer & McLaughlin

Attorneys for Plaintiff

Business Address:

110 East Middle Street

Chelsea, Michigan 48118

Phone 475-8866 or 475-1345

A true copy.

By David C. McLaughlin, Dec. 4-11-18-25

15, 1970 between Paul David Pierma as Seller and Paul Allen DePree as Purchaser for the following described real estate located in the City of Ann Arbor, Washtenaw County, Michigan:

The West 14 1/2 feet of the South 63 feet of the North 66 feet of Lot 2, Block 4 South, Range 8 East of the original Plat of the Village (now City) of Ann Arbor, County of Washtenaw, State of Michigan.

THIS SALE IS FOR THE PURPOSE OF FORECLOSING A CERTAIN LAND CONTRACT.

The redemption period shall be six (6) months from the date of sale. Dated this 4th day of December, 1975. Frederick A. Postill, Washtenaw County Sheriff, 118 West Ann Street, Ann Arbor, Michigan 48106.

Dyer, Meek, Huggins & Bullard, Attorneys for the Plaintiff, Suite 1800, One Woodward Avenue, Detroit, Michigan 48226. Dec. 4-Jan. 15

NOTICE OF JUDICIAL SALE

Circuit No. 75-8893 (C)

JUDICIAL SALE IN PURSUANCE and

by virtue of a Judgment of the Circuit

Court of the County of Washtenaw, State

of Michigan, made and entered on the 1st

day of October, A. D. 1975, in a certain

cause therein pending, wherein American

Savings Association, a Michigan Savings

Association (now American Savings and

Loan Association, a Federal Association), Plaintiff, and Suffolk Company, a

Michigan corporation, Harold Rosin and

Shirlee Rosin, his wife, jointly and severally, Defendants, a Michigan corporation,

P.C. Employees' Retirement Trust, a retirement trust fund, The Thomas O. Trovelli,

D.D.S., P.C. Employees' Pension Trust, a pension trust fund and The Thomas O. Trovelli, D.D.S., P.C. Employees' Retirement

Trust, a retirement trust fund, Defendants.

Notice is hereby given that I shall sell at public auction to the highest bidder at the West Main & Huron Street entrance to the County Building in Ann Arbor, State of Michigan (that being the building in which the Circuit Court for the County of Washtenaw is held) on Thursday, the 15th day of January, 1976, at 10:30 o'clock a.m., Local Time, the said day, the following described property, viz.:

All that certain piece or parcel of land situated and being in the Townships of

Solo and Webster, County of Washtenaw and State of Michigan, described as follows:

Lots 1, 2, 3, 4, 5, 6, 7, 8, 9, 10, 11, 12, 13, 14, 15, 16, 17, 18, 19, 20, 21, 22, 23, 24, 25, 26, 27, 28, 29, 30, 31, 32, 33, 34, 35, 36, 37, 38, 39, 40, 41, 42, 43, 44, 45, 46, 47, 48, 49, 50, 51, 52, 53, 54, 55, 56, 57, 58, 59, 60, 61, 62, 63, 64, 65, 66, 67, 68, 69, 70, 71, 72, 73, 74, 75, 76, 77, 78, 79, 80, 81, 82, 83, 84, 85, 86, 87, 88, 89, 90, 91, 92, 93, 94, 95, 96, 97, 98, 99, 100, 101, 102, 103, 104, 105, 106, 107, 108, 109, 110, 111, 112, 113, 114, 115, 116, 117, 118, 119, 120, 121, 122, 123, 124, 125, 126, 127, 128, 129, 130, 131, 132, 133, 134, 135, 136, 137, 138, 139, 140, 141, 142, 143, 144, 145, 146, 147, 148, 149, 150, 151, 152, 153, 154, 155, 156, 157, 158, 159, 160, 161, 162, 163, 164, 165, 166, 167, 168, 169, 170, 171, 172, 173, 174, 175, 176, 177, 178, 179, 180, 181, 182, 183, 184, 185, 186, 187, 188, 189, 190, 191, 192, 193, 194, 195, 196, 197, 198, 199, 200, 201, 202, 203, 204, 205, 206, 207, 208, 209, 210, 211, 212, 213, 214, 215, 216, 217, 218, 219, 220, 221, 222, 223, 224, 225, 226, 227, 228, 229, 230, 231, 232, 233, 234, 235, 236, 237, 238, 239, 240, 241, 242, 243, 244, 245, 246, 247, 248, 249, 250, 251, 252, 253, 254, 255, 256, 257, 258, 259, 260, 261, 262, 263, 264, 265, 266, 267, 268, 269, 270, 271, 272, 273, 274, 275, 276, 277, 278, 279, 280, 281, 282, 283, 284, 285, 286, 287, 288, 289, 290, 291, 292, 293, 294, 295, 296, 297, 298, 299, 300, 301, 302, 303, 304, 305, 306, 307, 308, 309, 310, 311, 312, 313, 314, 315, 316, 317, 318, 319, 320, 321, 322, 323, 324, 325, 326, 327, 328, 329, 330, 331, 332, 333, 334, 335, 336, 337, 338, 339, 340, 341, 342, 343, 344, 345, 346, 347, 348, 349, 350, 351, 352, 353, 354, 355, 356, 357, 358, 359, 360, 361, 362, 363, 364, 365, 366, 367, 368, 369, 370, 371, 372, 373, 374, 375, 376, 377, 378, 379, 380, 381, 382, 383, 384, 385, 386, 387, 388, 389, 390, 391, 392, 393, 394, 395, 396, 397, 398, 399, 400, 401, 402, 403, 404, 405, 406, 407, 408, 409, 410, 411, 412, 413, 414, 415, 416, 417, 418, 419, 420, 421, 422, 423, 424, 425, 426, 427, 428, 429, 430, 431, 432, 433, 434, 435, 436, 437, 438, 439, 440, 441, 442, 443, 444, 445, 446, 447, 448, 449, 450, 451, 452, 453, 454, 455, 456, 457, 458, 459, 460, 461, 462, 463, 464, 465, 466, 467, 468, 469, 470, 471, 472, 473, 474, 475, 476, 477, 478, 479, 480, 481, 482, 483, 484, 485, 486, 487, 488, 489, 490, 491, 492, 493, 494, 495, 496, 497, 498, 499, 500, 501, 502, 503, 504, 505, 506, 507, 508, 509, 510, 511, 512, 513, 514, 515, 516, 517, 518, 519, 520, 521, 522, 523, 524, 525, 526, 527, 528, 529, 530, 531, 532, 533, 534, 535, 536, 537, 538, 539, 540, 541, 542, 543, 544, 545, 546, 547, 548, 549, 550, 551, 552, 553, 554, 555, 556, 557, 558, 559, 560, 561, 562, 563, 564, 565, 566, 567, 568, 569, 570, 571, 572, 573, 574, 575, 576, 577, 578, 579, 580, 581, 582, 583, 584, 585, 586, 587, 588, 589, 590, 591, 592, 593, 594, 595, 596, 597, 598, 599, 600, 601, 602, 603, 604, 605, 606, 607, 608, 609, 610, 611, 612, 613, 614, 615, 616, 617, 618, 619, 620, 621, 622, 623, 624, 625, 626, 627, 628, 629, 630, 631, 632, 633, 634, 635, 636, 637, 638, 639, 640, 641, 642, 643, 644, 645, 646, 647, 648, 649, 650, 651, 652, 653, 654, 655, 656, 657, 658, 659, 660, 661, 662, 663, 664, 665, 666, 667, 668, 669, 670, 671, 672, 673, 674, 675, 676, 677, 678, 679, 680, 681, 682, 683, 684, 685, 686, 687, 688, 689, 690, 691, 692, 693, 694, 695, 696, 697, 698, 699, 700, 701, 702, 703, 704, 705, 706, 707, 708, 709, 710, 711, 712, 713, 714, 715, 716, 717, 718, 719, 720, 721, 722, 723, 724, 725, 726, 727, 728, 729, 730, 731, 732, 733, 734, 735, 736, 737, 738, 739, 740, 741, 742, 743, 744, 745, 746, 747, 748, 749, 750, 751, 752, 753, 754, 755, 756, 757, 758, 759, 760, 761, 762, 763, 764, 765, 766, 767, 768, 769, 770, 771, 772, 773, 774, 775, 776



BOWLING NEWS



Tri-City Mixed League

Standings as of Dec. 5

	W	L
Fleeth Craft & Co.	64	34
Fletcher & Baker	58	40
Stivers	58	40
M & M	55	43
3-D Sales & Service	54	44
The Proud Americans	54	44
Burnett & Sparks	51	47
Chelsea Cleaners	49	49
V.F.S.	48	50
E.P. Smith Pallet Co.	46	52
Real Estate One	46	52
Smiths Service	45	53
Portage Hardware	45	53
Palmer's Union 76	45	53
Mel's Roofing	44	54
McEwan & Mook	42	56
Little Rooster	41	57
Bable & Bable	37	61

50 series, men: G. Allen, 516; H. Burnett, 514; F. Burnett, 500; S. Cavender, 512; F. Cooper, 507; D. Dettling, 533; P. Fletcher, 581; L. Lyerla, 549; B. Maier, 585; A. Peterson, 532; T. Schulze, 517; D. Scott, 554; M. Smith, 567; C. Stapp, 522; K. Vasas, 543; D. Westcott, 504; R. V. Worden, 506.

200 games, men: H. Burnett, 207; J. Burnett, 215; S. Cavender, 200; S. 204; F. Cooper, 209; P. Fletcher, 213; B. Maier, 204; P. Maier, 210; K. Vasas, 202.

450 series, women: V. Allen, 471; M. Ashmore, 458; G. Dettling, 488; J. Harms, 459; C. Hodges, 485; M. Morales, 468; B. Parish, 471; J. Staphish, 462; C. Stiffer, 470; D. Worden, 450.

Unknowns League

Standings as of Dec. 2

	W	L
The Streakers	68	37
Independents	64 1/2	40 1/2
The Strikers	58	47
Nameless Five	48	57
Fascinating 'B'	39 1/2	65 1/2
Bahana Spits	37	68

425 series or over: J. Murphy, 448; J. Mosier, 430; J. Fitzsimmons, 491; P. Rowton, 438; K. Greenleaf, 482; C. Salyer, 430; M. Eeles, 449; R. Beeman, 544.

140 games or over: J. Murphy, 177; 143; K. Hanke, 147; J. Fitzsimmons, 191; 153; 152; M. Schulz, 141; C. Fleischmann, 144; P. Rowton, 142; 148; J. Mosier, 149; 143; S. Steele, 148; K. Greenleaf, 146; 175; 161; C. Salyer, 170; 153; E. Weiss, 145; M. Eeles, 154; 156; R. Beeman, 241; 188.

Rolling Pin League

Standings as of Dec. 9

	W	L
Pots	34	22
Kookie Kutters	34	22
Sugar Bowls	32	24
Egg Beaters	31	25
Grinders	31	25
Moppper Uppers	30 1/2	25 1/2
Sporadic Spatulas	30	26
Kitchen Kapers	30	26
Kitchen Kapers	30	26
Poachers	30	26
Spooners	29	27
Jelly Rollers	28 1/2	27 1/2
Dish Rags	28	28
Mixers	27	29
Jilly Mops	26	30
Blenders	26	30
Beaters	23	33
Coffee Cups	21	35
Brooms	12 1/2	43 1/2

500 series: E. Neibauer, 530; J. Shepherd, 514.

425 and over series: C. Shepherd, 471; S. Bowen, 446; J. Roe, 432; C. Brightwell, 428; T. Wilson, 442; J. Edick, 445; E. Williams, 451; P. Borders, 450; S. Parker, 449; N. Hill, 433; J. Buku, 467; D. Koezer, 435; P. Harok, 427; E. Gibb, 443; D. Anderson, 431; R. Musbach, 444; S. Ringe, 434; P. Wurster, 427; C. Dmoch, 444; D. Butler, 470.

150 and over games: G. Brier, 157; E. Neibauer, 174; 179; 177; C. Shepherd, 178; J. Shepherd, 212; 168; C. Brightwell, 167; J. Perry, 150; F. Perry, 176; S. Bowen, 158; 160; J. Roe, 181; T. Wilson, 150; 139; A. Clesson, 161; 151; D. Klink, 151; G. Clark, 151; G. Klink, 151; P. Borders, 165; S. Parker, 167; J. Edick, 176; 154; E. Wilk, 167; 168; A. Rivord, 165; D. Klink, 168; A. Rivord, 165; 157; R. Dils, 158; 189; J. Buku, 184; 152; 131; D. Koezer, 176; P. Harok, 157; E. Gibb, 169; D. Anderson, 183; P. Noll, 162; D. McAllister, 153; R. Musbach, 178; S. Ringe, 190; P. Wurster, 162; C. Dmoch, 163; 168; R. Bable, 174; D. Bable, 151; D. Butler, 172; 151; A. Grau, 155; 153; A.

Senior House

Standings as of Dec. 8

	W	L
Mark IV Lounge	70 1/2	21 1/2
S.J. Custom Service	66	32
Luke's Sporting Goods	63 1/2	34 1/2
Dana's Top Five	57	41
Schneider's Grocery	56	42
Sylvan Center	54	44
Gambles	54	44
Village Books	51	47
Chelsea Lumber	48	50
Sarns, Inc.	47	51
Frank Grohs Chevrolet	46	52
Washtenaw Crop Service	45	53
Bauer Builders	42	56
Walt's Barber Shop	42	56
IPSCO	41	57
Village Motor Sales	39	59
Dexter Automatics	28	70
Selz's Tavern	26	72

600 series: J. Harok, 632; G. Beeman, 639.

525 and over series: J. Lyerla, 549; R. Leitz, 575; R. Holliday, 534; D. Pasquonito, 533; M. Sweet, 546; R. Kelly, 547; W. Westphal, 581; O. Cavender, 548; P. Fletcher, 568; L. Salyer, 535; H. Burnett, 557; T. Schultz, 598; J. Edler, 573; R. Buckingham, 532; G. Knickerbicker, 554; C. Celso, 533; R. McCalla, 525; R. Maurer, 541; J. Collins, 595; N. Fahrner, 561.

210 and over games: R. Lentz, 223; G. Beeman, 210; 214; 215; R. Holliday, 211; R. Kelly, 212; W. Westphal, 218; P. Fletcher, 219; H. Burnett, 233; C. Celso, 211; G. Lawrence, 219; J. Harok, 217; 211; J. Collins, 218; N. Fahrner, 233.

Chelsea Suburban

Standings as of Dec. 3

	W	L
Waterloo Garage	71	41
Dancers	64	48
Dairy Queen	61	51
Chelsea Assoc. Builders	61	51
Frisinger Realty	60	52
Chelsea Drug	59	53
State Farm	59	53
Mark IV Lounge	54	58
Fletcher Mobil	49	63
Dana De-Lites	42	68
Cavanaugh Lake Store	42	68
Chelsea State Bank	39	73

150 games and over: C. Stoffer, 183; D. Hawley, 191; S. Bowen, 198; 152; P. Harok, 157; W. Steuart, 170; 188; 162; E. Miller, 162; J. Burnett, 177; E. Yocum, 165; N. Collins, 202; A. Wood, 153; V. Harvey, 162; E. Figg, 158; A. Hocking, 200; 159; A. Harrison, 153; H. Harrison, 152; F. Cole, 152; 158; D. Koezer, 159; 174; 153; C. Peterson, 150; M. DeLaTorre, 168; K. Snyder, 155; B. Robeson, 169; 150; N. Prater, 155; K. Chapman, 158; J. Huston, 153; N. Packard, 184; 189; 161; D. McAllister, 157; 171; D. Koezer, 156; J. Buku, 160; 155; M. Bollinger, 155; T. Monroe, 155; B. Haffey, 150; B. Fike, 150; 152; R. West, 159; 186; R. McGibney, 176; 155; 174; J. Schulze, 163; B. Beeman, 178; D. Vargo, 169; 156; L. Beeman, 164; S. Hafner, 166; 188; E. Ueber, 163; Schulz, 154; M. Ueber, 182; 163; 533; N. Packard, 534; R. West, 520; R. McGibney, 504; V. Stewart, 520; R. McGibney, 504; A. Hocking, 501; M. Usher, 488; S. Hafner, 479; D. Vargo, 489; B. Beeman, 436; T. Monroe, 433; B. Haffey, 431; N. Collins, 495; J. Burnett, 447; E. Miller, 473; C. Stoffer, 464; A. Wood, 436; F. Cole, 458; D. Koezer, 468; B. Robeson, 452; K. Snyder, 436; D. McAllister, 470; J. Buku, 457.

Women's Bowling Club

Standings as of Dec. 3

	W	L
Parish's Cleaners	45	19
Chelsea Milling	45	19
Thompson's Pizza	41	23
Jiffy Mixes	40	24
Palmer Ford	39 1/2	24 1/2
Washtenaw Engineering	38 1/2	25 1/2
Norris Electric	35 1/2	28 1/2
Wolverine Bar	33 1/2	30 1/2
Niles Amway	32	32
Lloyd Bridges Chevrolet	30	34
Larry's Roadside Mkt.	28 1/2	35 1/2
Klink Excavating	28	36
Mark IV	27	37
Chelsea Grinding	27	37
Rushing's Temp. Help	25	39
Norm's Barber Shop	23	41
Glen's Mobil	18 1/2	45 1/2
Joe and Judy's	18	46

500 series and over: C. Bradbury, 551; P. Fitzsimmons, 527; D. Judson, 524; K. McCalla, 505; T. Kenney, 504; N. Kern, 502.

450 series and over: G. Kuhl, 498; J. Norris, 493; L. Alexander, 487; N. Packard, 486; M. Eder, 484; R. Hummel, 482; J. Schleede, 482; B. Fritz, 479; A. Boham, 476; R. Johnson, 464; D. Elsemann, 463.

150 games and over: C. Bradbury, 189; 202; D. Judson, 172; 154; 198; K. McCalla, 160; 191; 151; G. Kuhl, 155; 207; J. Norris, 157; 170; 186; L. Alexander, 185; 165; N. Packard, 163; 167; 156; M. Eder, 158; 172; 154; R. Hummel, 154; 161; 167; J. Schleede, 175; 173; B. Fritz, 160; 177; A. Boham, 199; 151; R. Johnson, 175; 152; D. Elsemann, 156; 184; R. Whitaker, 153; 184; L. Boham, 157; B. Bridges, 162; 151; D. Fortner, 153; E. Whitaker, 152; 150; G. Klink, 180; S. Zink, 159; C. Powell, 173; B. Fike, 150; M. Kozminski, 177; B. Bush, 165; A. Fahrner, 163; Joann Rowe, 164; J. Weir, 159; 154; L. Behnke, 169; I. Fouty, 154; S. Ringe, 169; 1; Fouty, 154; S. Ringe, 169; B. McGuire, 179; H. Morgan, 153; M.E. Sutter, 165; D. Alexander, 156; A. Elisele, 168; L. Niles, 155; S. McCalla, 177; E. Kuhl, 156; J. Fitzsimmons, 167; J. Hafner, 159.

Junior House League

Jim Bradley Pontiac	71	34
Smith's Service	68	37
Mac Tools	65	40
Boyer Automotive	63	42
Mark IV Lounge	59	48
Chelsea Lanes	58	49
Dana Maintenance	58	49
3-D Sales & Service	57	49
Ypsi Asphalt Paving	55	50
Dana Demons	54	51
Washtenaw Engineering	53	52
Stocum Construction	52	53
Delf's Paints	48	57
Team No. 1	45	60
Wolverine Bar	40	65
Rockwell Int'l. No. 1	39	66
Ann Arbor Kirby	33	72
Rockwell Int'l. No. 2	25	80

600 series: A. Sannes, 600.

525 or over: P. Kelly, 545; T. Dittmar, 559; G. Beeman, 568; F. Dickinson, 578; P. Boham, 597; K. Larson, 535; E. Greenleaf, 563; P. White, 539; F. Northrop, 559; D. Clark, 533; M. Smith, 546; A. Allen, 538; L. Salyer, 555; D. Alexander, 541; T. Hodge, 543; R. Hinderer, 563; M. McAllister, 545; J. Harok, 532; G. Weir, 533; J. Eder, 589; D. Murphy, 576.

210 or over: A. Sannes, 210; G. Beeman, 211; D. Clark, 229; J. Eder, 217; G. Weir, 210.

Seven Point Mixed

	W	L
Hi Hopes	64	34
ZAP	60	38
The Foxes	59	39
Flat Tires	54	44
College Dodge	53	45
Dexter Gear	52	46
Elliott & Sons	51	47
Strike Outs	46	52
Bowling Wizards	45	53
River Rats	38	60
7 M's Bar	38	60
Alley Runners	28	70

Men, 450 games and over: J. Fortner, 545; D. Carpenter, 524; M. Fox, 531; A. Hansen, 567; W. Teachworth, 557; G. Beeman, 577; J. Fortner, 545; O. Inbody, 498; F. Steers, 450; W. Beverie, 486; D. Carpenter, 524.

Men, 160 games and over: J. Fortner, 210; 178; D. Carpenter, 212; M. Fox, 171; 171; 189; R. Fox, 164; F. Steers, 173; W. Beverie, 190; A. Hansen, 228; 181; 160; W. Teachworth, 209; 172; 178; G. Beeman, 206; 191; 180; O. Inbody, 177; W. Elliott, 168; 176.

Women, 425 series and over: L. Rettig, 459; B. Carpenter, 460; S. D. Beverie, 448; D. Hansen, 455; C. Teachworth, 434; P. Scherdt, 438; C. Klapperich, 531; C. Powell, 455; M. Inbody, 444; V. Elliott, 438.

Women, 150 games and over: M. Inbody, 161; 159; C. Powell, 157; 174; P. Norris, 158; P. Scherdt, 158; 155; V. Guenther, 159; 137; D. Beverie, 192; C. Klapperich, 194; 190; S. Howell, 151; C. Teachworth, 170; D. Hansen, 192; 157; S. Hopkins, 169; 175; L. Bernard, 151; M. Van Aken, 174; L. Rettig, 202; 163; P. Fortner, 156; B. Carpenter, 152; 159.

Charlie Brown & Snoopy Peanut League

Standings as of Dec. 6

	W	L
Super Stars	25	8
Bowling Green	20	13
Buildups	18	15
Super Strikers	15 1/2	17 1/2
Snoopies	11 1/2	21 1/2
Pinwheels	9	24

Games 70 and over: J. Tobin, 86; D. Dettling, 152; 88; J. Schaefer,

Leisure Time League

Standings as of Dec. 4

	W	L
Unpredictables	33	19
Rug Rats	33	19
Misfits	30	22
Sugar Loafers	29	23
Four Stooges	28 1/2	23 1/2
The Lakers	26 1/2	25 1/2
Highly Hopefuls	25	27
Slowpokes	24 1/2	27 1/2
Crackpots	24	28
Roadrunners	24	28
Holy Rollers	18	34
Lady Bugs	16 1/2	35 1/2

400 series and over: D. Hafner, 420; D. Dault, 437; L. Haller, 408; M. O'Donnell, 430; S. Brown, 438; B. Marsh, 401; E. Williams, 430; D. Thompson, 422; S. Friday, 421; K. Haywood, 427; V. Wheaton, 478; J. Anderson, 412; K. Haywood, 427; V. Wheaton, 478; J. Anderson, 412; J. Delagrange, 433; C. Engler, 402; G. Tallman, 414; S. Centilli, 402; B. Robinson,

474; C. Hoffman, 422; E. Swanson, 421.

140 games and over: D. Hafner, 144; J. Mull, 141; D. Dault, 143; 171; L. Haller, 175; W. Trapp, 151; N. Primrose, 144; M. O'Donnell, 144; 139; S. Brown, 142; 149; 147; B. Marsh, 154; M. Shears, 141; E. Williams, 151; 151; D. Thompson, 153; 144; S. Friday, 154; K. Haywood, 154; 147; V. Wheaton, 148; 163; 165; J. Delagrange, 144; 164; C. Engler, 174; M. Herrin, 141; P. Whitesall, 152; G. Tallman, 161; S. Centilli, 156; B. Robinson, 158; 158; 158; P. Weigang, 141; C. Hoffman, 141; 147; S. Weston, 157; E. Swanson, 142; 157; C. Kuzon, 152.

Junior Stringers

Standings as of Dec. 6

	W	L
Boone's Farm Five	33 1/2	6 1/2
Women Libbers	30	15
Team No. 10	28 1/2	18 1/2
Team No. 2	26	22
Boyer Automotive	22	26
Fantastic Five	21	27
Born Losers	19	29
Alley Runners	18	30
Team No. 9	11	35

Girls, high games: C. Collins, 481; M. Fahrner, 468; K. Tobin, 448; S. Schulze, 412.

Boys high games: M. Sweeney, 200; J. Push, 198; 162; M. Schmitt, 193; 162; J. Sweet, 192; M. Foster, 190.

Boys high series: J. Push, 517; M. Schmitt, 509; C. Sannes, 496; J. Alexander, 493; M. Foster, 492.

Charlie Brown Prep

Standings as of Dec. 6

	W	L
Village Motor Strikers	18	6
Buildups	18	6
Dile's Pickles	16	8
The Monkeys	16	8
Super Strikers	13	11
Fantastic Five	13	11
Unbeatables	11	13
Pin Crackers	10	14
Rolling Stones	9	15
Pin Sweepers	9	15
All Stars	6	18
Purple Stars	5	19

Girls, high games: D. Thompson, 161; L. Mepians, 150; C. Fahrner, 141; M. Alexander, 135.

Farley Construction

322 HOWARD RD.

ADDITIONS - REMODELING
CONCRETE WORK
REPAIRS

475-8265 or 475-7643

Charlie Brown & Snoopy Peanut League

Standings as of Dec. 6

	W	L
Super Stars	25	8
Bowling Green	20	13
Buildups	18	15
Super Strikers	15 1/2	17 1/2
Snoopies	11 1/2	21 1/2
Pinwheels	9	24

Games 70 and over: J. Tobin, 86; D. Dettling, 152; 88; J. Schaefer,

Looking for the
**OLD FASHION
CHRISTMAS SPIRIT**
... Shop in Chelsea!

Stores Will Be Open 10 Nights Until 8:30 p.m.

Friendly
Personnel

★
FREE
GIFT
WRAPPING
(in most stores)



GETTING A BIG SQUEEZE: Five-year-old Robin Hafner and three-year-old Nathan Foster get a big squeeze from Santa Claus last Saturday afternoon when he appeared at the Longworth Plating building on Main St. The kids also got some candy, a coloring book and a chance to tell Santa just what they wanted for their special Christmas gift. Robin is the daughter of Mr. and Mrs. James Hafner. Scott is the son of Mr. and Mrs. Scott Foster.

ALTA SOCIETY

St. Mary's Altar Society held their December meeting recently. After the regular business meeting a Christmas program was given. Mrs. Vincent Hafner gave several readings and poems in keeping with Christmas. Mrs. Charles Sullivan was in charge of the gift exchange. A social hour was enjoyed with refreshments served by Mrs. Leon Chapman and her committee. The next meeting will be Jan. 5, at 7:30 p.m., in St. Mary's gym.

4-H Clubs

TERRIFIC TAILORS

Terrific Tailors 4-H club opened their meeting on Dec. 8 by having Beth Bush read the minutes of the last meeting. After we adjourned he meeting our leaders, Mrs. Anderson and Mrs. Hughes, looked at everybody's material and pattern. Afterwards we had hot cocoa. We are having our Christmas party on Dec. 13.

Linda Bristle, reporter.

Jodi Daniels Pledges Sorority at Miami U.

Jodi K. Daniels is among 421 Miami University (Oxford, O.) women students, mostly freshmen, who became pledges of 19 Miami sororities in rush earlier this fall. The announcement came through Miami's Panhellenic Association. A freshman at Miami, Jodi is a Zeta Tau Alpha pledge. She is the daughter of Mr. and Mrs. Robert L. Daniels of 665 Washington.



AL KLEIS
475-7322

BUILDING SITE

Beautiful 1-acre building site overlooking a quiet lake, within easy driving distance from Chelsea or Ann Arbor. Priced to sell, with excellent terms.



REAL ESTATE ONE
OF WASHTEAW
REALTORS
1196 M-52, Chelsea 475-8693

MAGNAVOX

HOLIDAY

VALUES

- Television
- Stereo
- Radios
- Tape Recorders

Videomatic... good for the picture... good for your eyes!

The American Optometric Association, professional eye experts, recommends that you adapt your TV set to room lighting, not the room lighting to the television set's picture. Videomatic... using an electronic eye that sees changes in room light and automatically adjusts the picture for eye-pleasing, comfortable viewing. In any light. Videomatic also is the most automatic one-button tuning system in the industry. And, all Videomatic TV's have a 100% solid-state chassis for dependable performance and energy-saving economy. They use far less electricity than conventional tube sets. All Magnavox solid-state color TV's are extra tested for extra reliability at the OK Corral. Of all leading makers of solid-state color TV, only Magnavox subjects each set to 24 continuous hours of testing before it leaves the factory. Look for the "OK" seal—your guide to reliability.



25" diagonal Videomatic Color Console



Model 4540—with vinyl over wood products—is available in White, accented with a grained Pecan top... or grained Pecan finish, accented with a Black slate-like top. You'll see brilliant color pictures that are easy on your eyes. You'll also enjoy the energy-saving, fine performance of 100% solid-state circuitry. A gift for you and your family to enjoy all year long!

SAVE \$100
NOW \$599⁹⁵



SAVE \$170

High Performance Stereo
Model 2240 includes a solid-state stereo FM/AM tuner/amplifier with a built-in matrix sound decoder... a deluxe full-size record changer, with protective dust cover, two air-suspension speaker enclosures—each with an 8" Bass Woofer and a 3 1/2" Cone Tweeter. You even get earphones! Check the prices of the individual components—and you'll really appreciate this low price.
\$349⁸⁰

Magnificent Stereo Console



Model 6726—Mediterranean styling

SAVE \$50⁰⁰

Give the gift of beautiful music! Pleasing to your eyes, as well as to your ears—this fine stereo console (in your choice of five styles) will bring you the full enjoyment of stereo FM/AM radio, your records and 8-track cartridges. Sound is projected from both sides and front of the cabinets by a deluxe 3-way stereo speaker system with two 10" High-Compliance Bass Woofers (two 8" in model 6728), two 5" Mid-Range Speakers and two 3 1/2" Tweeters. You'll enjoy thrilling stereo separation.

NOW \$499⁹⁵

CLOSE-OUT SALE

BREAKFRONT CONSOLE STEREO

Reg. \$349.95 **NOW \$299⁹⁵**

AM-FM MUSIC BIN with 8-TRACK

Reg. \$269.95 **NOW \$229⁹⁵**

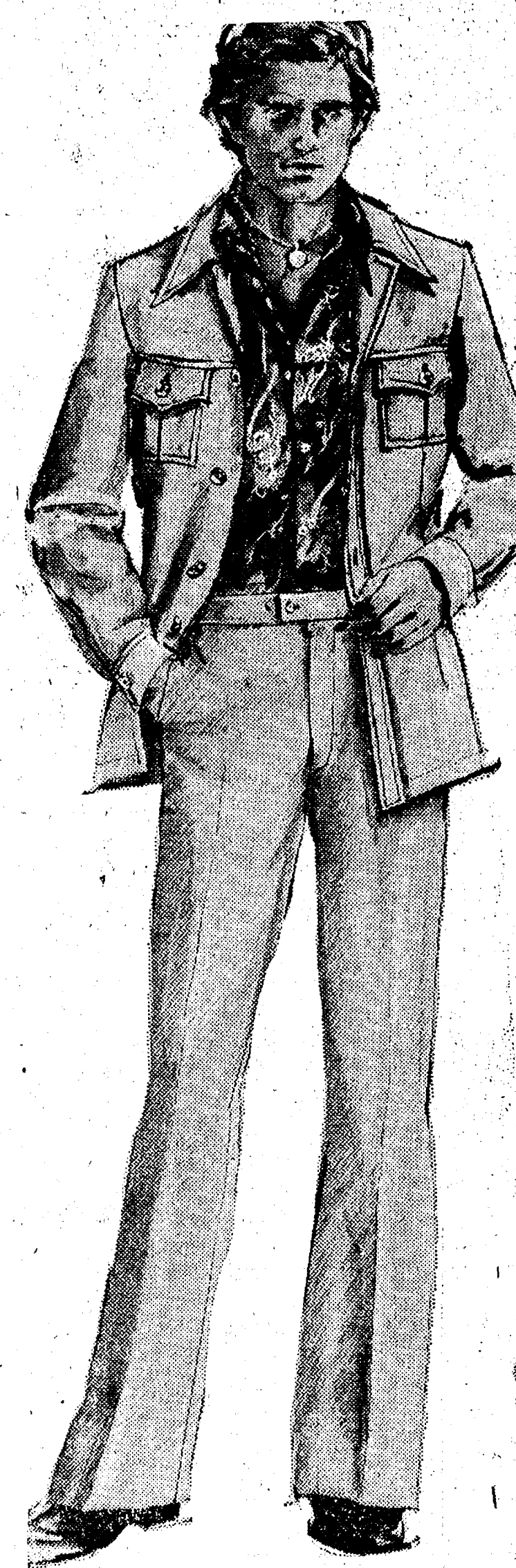
DRUM TABLE STEREO

Reg. \$349.95 **NOW \$299⁹⁵**

COMPONENTS

1 MAGNAVOX 8-TRACK 1 MAGNAVOX 8-TRACK
AM-FM **\$149⁹⁵** AM-FM **\$159⁹⁵**

the perfect gift



COMFORT PLUS
BY HAGGAR

Haggar slacks and tops in a texturized woven Avant Gab's gabardine of machine washable, 100% Dacron® polyester. The \$26 top comes in cool pastels and darker shades designed to mix and match with a variety of Haggar slacks. Featured \$18 matching slacks have a trim European fit with a narrow beltless waistband and wide flare bottoms. A complete Haggar outfit. Slacks, \$18 Top, \$26

STRIETER'S
CHRISTMAS STORE FOR MEN

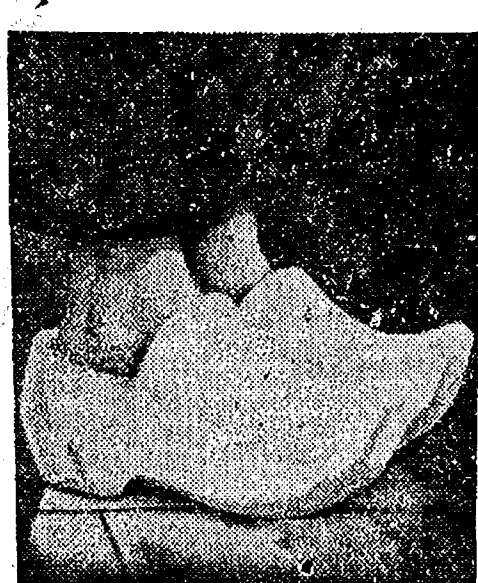
SCHOOL LUNCH MENU!!

Week of Dec. 15-19
Monday—Peanut butter, buns, trimmings, buttered vegetable, potato tots, harvest cake and milk.
Tuesday—Bar-B-Q, buns, pickle chips, buttered corn, potato chips, cherry crisp and milk.
Wednesday—Lasagna, tossed salad, bread, butter, chocolate eclairs and milk.
Thursday—Hot dogs, buns, trimmings, pork and beans, french fries, dessert and milk.
Friday—Christmas dinner. Tur- with all the trimmings.
Merry Christmas from all of us, the Chelsea cafeteria girls.

Tools, Jacket Stolen From Unlocked Car

A gray Craftsman tool box containing assorted carpenter and mechanic tools valued at \$400 and a leather jacket valued at \$30 were reported stolen from a parked 1966 Jeep Wagoneer Dec. 3. Owner of the Jeep, Steve Dygert of 543 1/2 W. Middle, told Chelsea police that his car was parked in his driveway. When he went to his car on the morning of Dec. 3, he discovered the items missing. Forced entry was not made to the car as it was unlocked. Police have no suspects and the case remains open pending further investigation.

Dutch Boy
PORCH AND FLOOR ENAMEL



YOU'LL BE GLAD IT'S UNDERFOOT.

No matter how many steps you take on our Porch and Floor enamel, it never gets tired. Use it inside or out, on porches, steps, walks and decks—for wood, concrete, brick or metal. Its tough film resists the heaviest traffic and keeps its bright appearance in spite of weather and frequent washing. Dries quickly, too, so your floors are back in service in no time. When you re-paint next time, use Dutch Boy Porch and Floor enamel. It'll be underfoot a long, long time.



You will remember the quality of Dutch Boy paints long after the price is forgotten.

MERKEL
Home Furnishings

HEYDLAUFF'S

113 North Main St., Chelsea

Phone 475-1221